

AD 2. AERODROMES**SURV AD 2.13-1 AERODROME LOCATION INDICATOR AND NAME**

SURV - RIVERA/Intl Presidente General (Piloto Aviador Militar) don Oscar D. Gestido

SURV 2.13-2 AERODROME GEOGRAPHICAL AND ADMINISTRATIVE DATA

1	<i>ARP coordinates and site at AD</i>	305810S 0552824W Mid point terminal building apron
2	<i>Direction and distance from (city)</i>	10 KM SE from the centre of the city
3	<i>Elevation/Reference temperature</i>	217 M (712 FT) / 31°C
4	<i>Geoid undulation at AD ELEV PSN</i>	14 M
5	<i>MAG VAR/Annual change</i>	13° W (JAN 2015) / 0.17° increasing
6	<i>AD operator, address, telephone, telefax, e-mail address, AFS address, website address</i>	Dirección Nacional de Aviación Civil e Infraestructura Aeronáutica Aeropuerto Intl de Rivera Presidente General Oscar D. Gestido Rivera Tel: 4622 4921 – 4623 2644 Telefax: 4622 4921 e-mail: surv@dinacia.gub.uy AFS: SURVYTYX
7	<i>Types of traffic permitted (IFR/VFR)</i>	IFR/VFR
8	<i>Remarks</i>	Nil

SURV AD 2.13-3 OPERATIONAL HOURS

1	<i>AD Operator</i>	MON-FRI 10:00 to 22:00 UTC. SAT 13:00 to 21:00 UTC (Prior notice required)
2	<i>Customs and immigration</i>	O/R – Office in the city
3	<i>Health and sanitation</i>	In the city
4	<i>AIS Briefing Office</i>	Nil
5	<i>ATS Reporting Office (ARO)</i>	As AD Operator
6	<i>MET Briefing Office</i>	O/R – Office in the city
7	<i>ATS</i>	☛ MON - FRI (except holidays) from 10:00 to 22:00 UTC
8	<i>Fuelling</i>	As AD Operator
9	<i>Handling</i>	As AD Operator
10	<i>Security</i>	H24
11	<i>De-icing</i>	Nil
12	<i>Remarks</i>	Nil

SURV AD 2.13-4 HANDLING SERVICES AND FACILITIES

1	<i>Cargo-handling facilities</i>	Nil
2	<i>Fuel/oil types</i>	Fuel 100, JP1 / Oil: Nil
3	<i>Fuelling facilities/capacity</i>	Fuel 100 5.000 L; JP1 10.000 L
4	<i>De-icing facilities</i>	Nil
5	<i>Hangar space for visiting aircraft</i>	Nil
6	<i>Repair facilities for visiting aircraft</i>	Nil
7	<i>Remarks</i>	Nil

SURV AD 2.13-5 PASSENGER FACILITIES

1	<i>Hotels</i>	In the city
2	<i>Restaurants</i>	In the city
3	<i>Transportation</i>	Taxis on the city
4	<i>Medical facilities</i>	In the city
5	<i>Bank and Post Office</i>	Nil
6	<i>Tourist Office</i>	Nil
7	<i>Remarks</i>	Phone card Telephones

SURV AD 2.13-6 RESCUE AND FIRE FIGHTING SERVICES

1	<i>AD category for fire fighting</i>	☛ CAT 4 O/R of the Air Operator with Ministerio del Interior crew prior coordination.
2	<i>Rescue equipment</i>	Nil
3	<i>Capability for removal of disabled aircraft</i>	Nil
4	<i>Remarks</i>	In case of major accident, FAU aircraft support immediate response, FAU rescue personnel, firefighters and doctors specializing in severe polytrauma.

SURV AD 2.13-7 SEASONAL AVAILABILITY - CLEARING

1	<i>Types of clearing equipment</i>	Nil
---	------------------------------------	-----

SURV AD 2.13-8 APRONS, TAXIWAYS AND CHECK LOCATIONS/POSITIONS DATA

1	<i>Apron surface and strength</i>	Surface: double surface treatment and sealing Strength: 32/F/B/X/T
2	<i>Taxiway width, surface and strength</i>	Width: 23 M Surface: surface treatment Strength: 32/F/B/X/T
3	<i>Altimeter checkpoint location and elevation</i>	Apron centre (305810S/0552824W) 214 M
4	<i>VOR/INS checkpoints</i>	Nil
5	<i>Remarks</i>	Nil

SURV AD 2.13-9 SURFACE MOVEMENT GUIDANCE AND CONTROL SYSTEM AND MARKINGS

1	<i>Use of aircraft stand ID signs, TWY guide lines and visual docking/parking guidance system of aircraft stands</i>	☛ TWY line guides
2	<i>RWY and TWY markings and LGT</i>	RWY: Designation, centre line and THR TWY: Holding points.
3	<i>Stop bars</i>	Stop bars on TWY
4	<i>Remarks</i>	Nil

SURV AD 2.13-10 AERODROME OBSTACLES

<i>In approach/TKOF areas</i>			<i>In circling area and at AD</i>		<i>Remarks</i>	
1			2			3
<i>RWY/Area affected</i>	<i>Obstacle type</i>	<i>Elevation</i>	<i>Obstacle type</i>	<i>Elevation</i>	<i>Coordinates</i>	Nil
	<i>Markings/LGT</i>	<i>Coordinates</i>	<i>Markings/LGT</i>	<i>Coordinates</i>		
a	b	c	a	b		
No data						

SURV AD 2.13-11 METEOROLOGICAL INFORMATION PROVIDED

1	<i>Associated MET Office</i>	☛ Dirección Nacional de Meteorología Uruguay (National Directorate of Meteorology) in the city
2	<i>Hours of service MET Office outside hours</i>	☛ In the city provided by Dirección Nacional de Meteorología Uruguay
3	<i>Office responsible for TAF preparation Periods of validity</i>	Surveillance MET Office CARRASCO H 24
4	<i>Trend forecast Interval of issuance</i>	Nil
5	<i>Briefing/consultation provided</i>	O/R
6	<i>Flight documentation Language(s) used</i>	Nil
7	<i>Charts and other information available for briefing or consultation</i>	Nil
8	<i>Supplementary equipment available for providing information</i>	Nil
9	<i>ATS units provided with information</i>	RIVERA OPS
10	<i>Additional information (limitation of service, etc.)</i>	☛ In Aerodrome information service is provided in plain language the ☛ hours of operation of Air Traffic Service, upon request.

SURV AD 2.13-12 RUNWAY PHYSICAL CHARACTERISTICS

<i>Designations RWY NR</i>	<i>TRUE BRG</i>	<i>Dimensions of RWY (M)</i>	<i>Strength (PCN) and surface of RWY and SWY</i>	<i>THR coordinates. RWY end coordinates. THR geoid undulation</i>	<i>THR elevation and highest elevation of TDZ of precision APP RWY</i>
1	2	3	4	5	6
05	☛044°	1 830 x 45	32/F/B/X/T Bituminous treatment	305850.67S 0552857.18W ☛305850.67S ☛0552857.18W ☛GUND 14.0 M	THR 201 M/659 FT
23	☛224°	1 830 x 45	32/F/B/X/T Bituminous treatment	305806.47S 0552811.13W ☛305806.47S ☛0552811.13W ☛GUND 14.0 M	THR 217 M/712 FT
<i>Slope of RWY-SWY</i>	<i>SWY dimensions (M)</i>	<i>CWY dimensions (M)</i>	<i>Strip dimensions (M)</i>	<i>OFZ</i>	<i>Remarks</i>
7	8	9	10	11	12
+0.73%/+0.94%/+0.8% (580 M) (850 M) (400 M)	Nil	Nil	2 060 x 150	Nil	Nil
-0.8%/-0.94%/-0.73% (400 M) (850 M) (580 M)	Nil	Nil	2 060 x 150	Nil	Nil

SURV AD 2.13-13 DECLARED DISTANCES

<i>RWY Designator</i>	<i>TORA (M)</i>	<i>TODA (M)</i>	<i>ASDA (M)</i>	<i>LDA (M)</i>	<i>Remarks</i>
1	2	3	4	5	6
05	1 830	1 830	1 830	1 830	Nil
23	1 830	1 830	1 830	1 830	Nil

SURV AD 2.13-14 APPROACH AND RUNWAY LIGHTING

<i>RWY Desig- nator</i>	<i>APCH LGT type LEN INTST</i>	<i>THR LGT colour WBAR</i>	<i>VASIS (MEHT) PAPI</i>	<i>TDZ, LGT LEN</i>	<i>RWY Centre Line LGT Length, spacing, colour, INTST</i>	<i>RWY edge LGT LEN, spacing colour INTST</i>	<i>RWY End LGT colour WBAR</i>	<i>SWY LGT LEN (M) colour</i>	<i>Remarks</i>
1	2	3	4	5	6	7	8	9	10
05	Nil	Green Red	Nil	Nil	Nil	1830 M, 60 M White	- White Amber	Nil	Nil
23	Nil	Green Red	Nil	Nil	Nil	1830 M, 60 M White	- White Amber	Nil	Nil

SURV AD 2.13-15 OTHER LIGHTING, SECONDARY POWER SUPPLY

1	<i>ABN/IBN location, characteristics and hours of operation</i>	ABN: Building TWR/ IBN: Nil
2	<i>LDI location and LGT Anemometer location and LGT</i>	WDI: 050 M SE from ARP, lighted Anemometer: 100 M from the RWY axis
3	<i>TWY edge and centre line lighting</i>	Edge: blue lights Centre: Nil
4	<i>Secondary power supply/switch-over time</i>	Secondary power supply: 26 KW (automatic manual) for the entire aerodrome.
5	<i>Remarks</i>	Nil

SURV AD 2.13-16 HELICOPTER LANDING AREA

1	<i>Coordinates TLOF or THR of FATO</i>	Nil
2	<i>TLOF and/or FATO elevation M/FT</i>	Nil
3	<i>TLOF and FATO area dimensions, surface, strength, marking</i>	Nil
4	<i>True and MAG BRG FATO</i>	Nil
5	<i>Declared distance available</i>	Nil
6	<i>APP and FATO lighting</i>	Nil
7	<i>Remarks</i>	Nil

SURV AD 2.13-17 ATS AIRSPACE

1	<i>Designation and lateral limits</i>	RIVERA CTR Arc, radius 10 NM (18 KM) centred at 305810S/0552824W up to the FIR limit. RIVERA ATZ Circle, radius 4 NM centred at 305810S/0552824W
2	<i>Vertical limits</i>	CTR: GND up to FL 055 ATZ: GND up to 450 M
3	<i>Airspace classification</i>	From MON to FRI (except holidays) from 10:00 to 22:00 UTC: "C"; others: "G".
4	<i>ATS unit call sign Language(s)</i>	Rivera Tower ☛ Spanish, English (O/R)
5	<i>Transition altitude</i>	900 M
6	<i>Remarks</i>	Nil

SURV AD 2.13-18 ATS COMMUNICATION FACILITIES

<i>Service designation</i>	<i>Call sign</i>	<i>Frequency</i>	<i>Hours of operation</i>	<i>Remarks</i>
1	2	3	4	5
TWR	Rivera Tower	118.0 MHZ 122.1 MHZ†	As AD	† Secondary FREQ

SURV AD 2.13-19 RADIO NAVIGATION AND LANDING AIDS

<i>Type of aid, MAG VAR, Type of supported OP (for VOR/ILS/MLS, give declination)</i>	<i>ID</i>	<i>Frequency</i>	<i>Hours of operation</i>	<i>Position of transmitting antenna coordinates</i>	<i>Elevation of DME transmitting antenna</i>	<i>Remarks</i>
1	2	3	4	5	6	7

SURV AD 2.13-22 FLIGHT PROCEDURES

✈ IFR takeoff minimums

✈ The minimum applicable for take-off in terms of ceiling and visibility shall be the minimum expected for the instrumental approach procedure published for the runway in use. If a visual circulation is necessary, the minimums published for the runway in use shall be applied.

- a) ✈ Aircraft must be equipped with the necessary instruments for the operation;
- b) ✈ the necessary radio aids must be operational

✈ IFR landing minimums

✈ The minimum necessary for landing in terms of ceiling and visibility, shall be the minimum for the instrumental approach procedure published for the runway in use.

Minimum vertical separation in the Traffic Circuit of Rivera.

Nil.

SURV AD 2.13-24 CHARTS RELATED TO AN AERODROME

Aerodrome/Heliport Chart – ICAO	AD 2.13-11
☛ Instrument Approach Chart - ICAO RNAV (GNSS) RWY 05	AD 2.13-13

AERODROME/HELIPORT **30°58'10"S** **ELEV 217**
CHART - ICAO **055°28'24"W** **(712)**

TWR 118.0 - 122.1
APRON 118.0 - 122.1

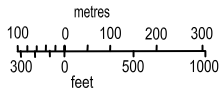
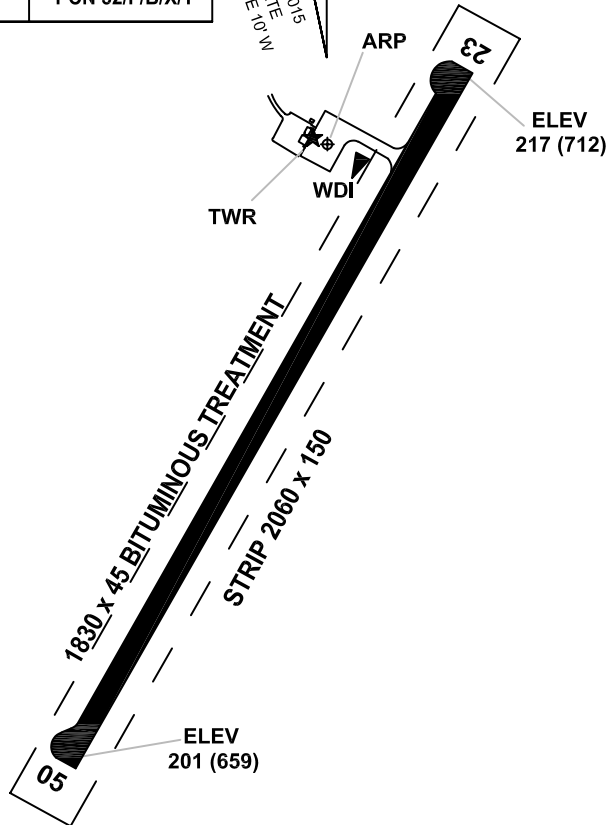
RIVERA/Intl
Presidente General
Oscar D. Gestido

RWY	DIRECTION	THR	GUND	BEARING STRENGTH
05	054°	30°58'50.67"S 55°28'57.18"W	14.0 M	Runway, Apron and Taxiway PCN 32/F/B/X/T
23	234°	30°58'06.47"S 55°28'11.13"W	14.0 M	

ELEVATIONS IN METRES (AND FEET)
DIMENSIONS IN METRES
BEARINGS ARE MAGNETIC

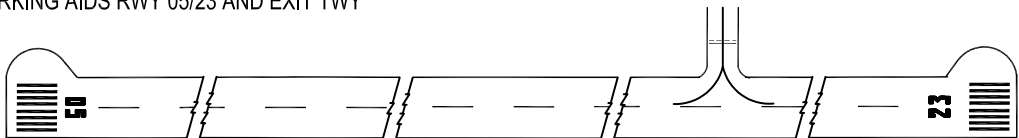
VAR 13° W - 2015
ANNUAL RATE
OF CHANGE 10' W

TAXIWAYS 23 WIDE

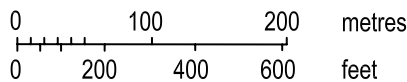
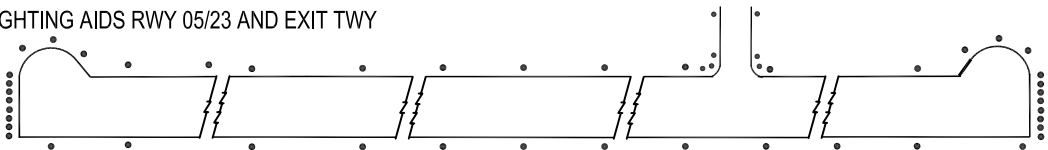


Change:
VAR, GUND included.

MARKING AIDS RWY 05/23 AND EXIT TWY



LIGHTING AIDS RWY 05/23 AND EXIT TWY



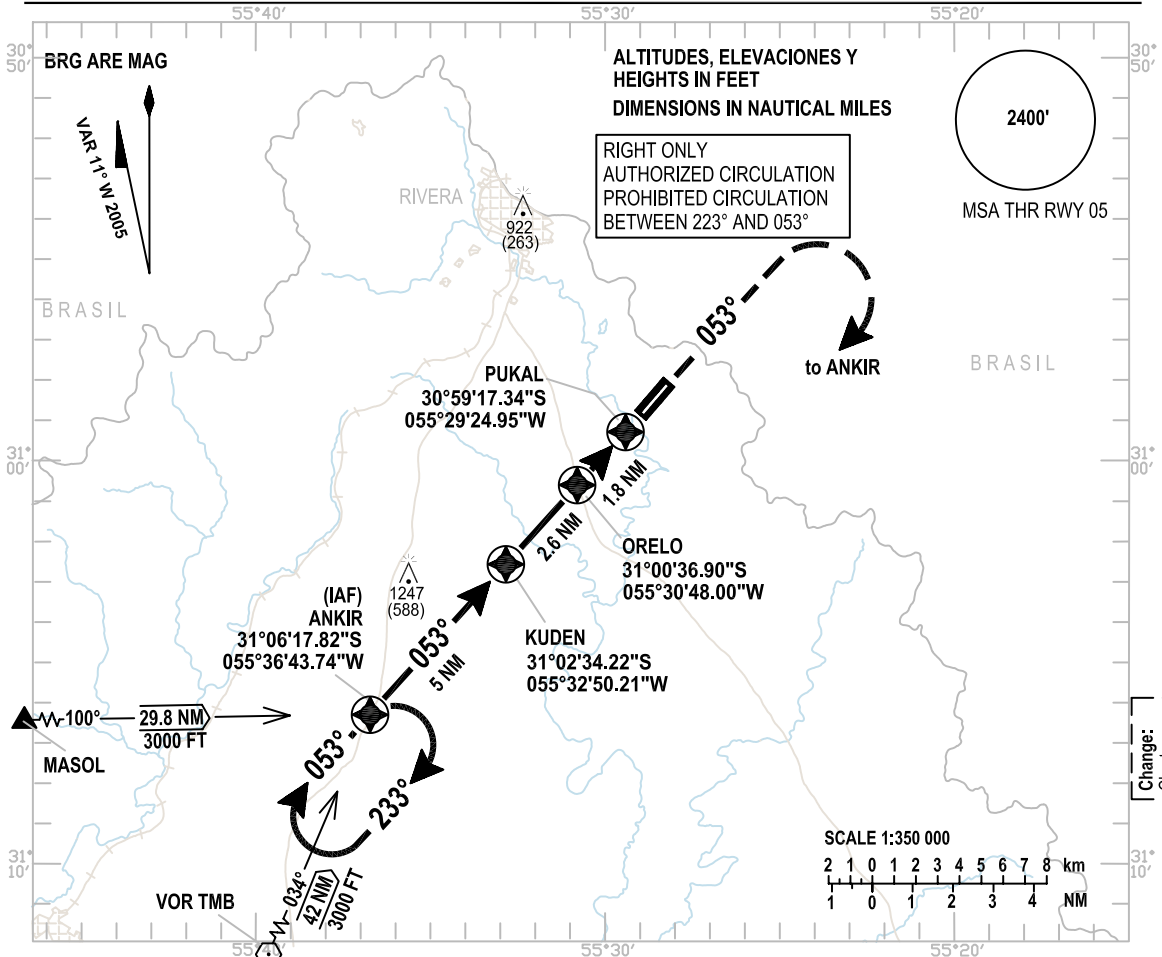
**INTENTIONALLY
LEFT BLANK**

INSTRUMENT
APPROACH
CHART - ICAO

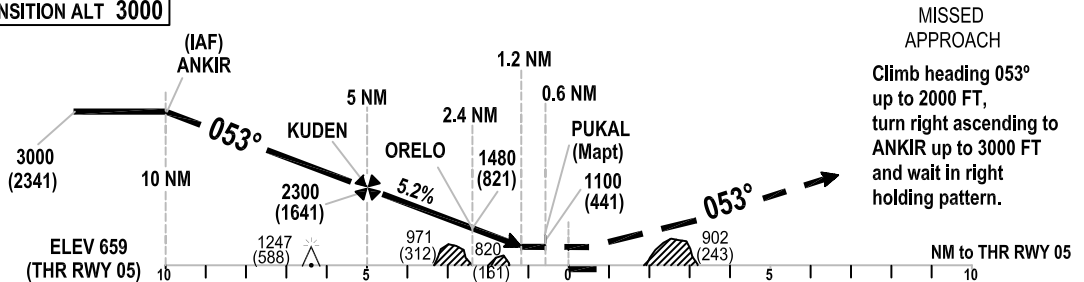
AERODROME ELEV **712 FT**
HEIGHTS RELATED TO
THR RWY 05 - ELEV 659 FT

TWR 118.0 - 122.1

RIVERA/Intl
Presidente General
Oscar D. Gestido
RNAV (GNSS)
RWY 05



TRANSITION ALT 3000



OCA/H	A	B	C	D
GPS		1100(441)		
VIS		1600 M		
Straight-in Approach				
Circling VIS	1300 (641)	1500 (841)		
	1900 m	2800 m	3700 m	4600 m

**INTENTIONALLY
LEFT BLANK**