

AD 2. AERODROMES**SUCM AD 2.2-1 AERODROME LOCATION INDICATOR AND NAME**

SUCM - CARMELO/Intl

SUCM 2.2-2 AERODROME GEOGRAPHICAL AND ADMINISTRATIVE DATA

1	ARP coordinates and site at AD	335758S 0581931W Runway centre
2	Direction and distance from (city)	8 KM NW from the city of Carmelo
3	Elevation/Reference temperature	11 M (36 FT) / 28°C
4	Geoid undulation at AD ELEV PSN	17 M
5	MAG VAR/Annual change	10° W (JAN 2020) / 0.16° increasing
6	AD operator, address, telephone, telefax, e-mail address, AFS address, website address	☛ Puerta del Sur S.A. Balneario Zagarzazú ☛ Route 21, KM 260,800 ☛ Telephone: 4542 9255, (598) 98454805 (Operaciones Puerta del Sur) ☛ e-mail: Operaciones.sucm@aeropuertosuruguay.com.uy
7	Types of traffic permitted (IFR/VFR)	VFR
8	Remarks	☛ Administrative coordinator: DINACIA. Aircraft ground handling service provided by the Aerodrome Operator.

SUCM AD 2.2-3 OPERATIONAL HOURS

1	AD Operator	☛ H24
2	Customs and immigration	☛ O/R
3	Health and sanitation	Nil
4	AIS Briefing Office	H24
5	ATS Reporting Office (ARO)	As AD Operator
6	MET Briefing Office	As AD Operator
7	ATS	Nil
8	Fuelling	☛ Coordinate with the AD Operator
9	Handling	As AD Operator
10	Security	As AD Operator
11	De-icing	Nil
12	Remarks	Nil

SUCM AD 2.2-4 HANDLING SERVICES AND FACILITIES

1	<i>Cargo-handling facilities</i>	Nil
2	<i>Fuel/oil types</i>	☛ Fuel: AVGAS 100; JET A-1 ☛ Oil: Nil
3	<i>Fuelling facilities/capacity</i>	☛ AVGAS 100: 1 tank of 5000 L ☛ JET A1: 1 tank of 5000 L
4	<i>De-icing facilities</i>	Nil
5	<i>Hangar space for visiting aircraft</i>	☛ Coordinate with the AD operator
6	<i>Repair facilities for visiting aircraft</i>	Nil
7	<i>Remarks</i>	☛ 28V Ultra Starter kit model UST-4030

SUCM AD 2.2-5 PASSENGER FACILITIES

1	<i>Hotels</i>	In the city
2	<i>Restaurants</i>	In the city
3	<i>Transportation</i>	Taxis
4	<i>Medical facilities</i>	In the city
5	<i>Bank and Post Office</i>	In the city
6	<i>Tourist Office</i>	In the city
7	<i>Remarks</i>	Nil

SUCM AD 2.2-6 RESCUE AND FIRE FIGHTING SERVICES

1	<i>AD category for fire fighting</i>	☛ Category 3. One CFFR Oshkosh vehicle, T1500, 4x4, 5678 L of water, 750 L of level C foam and 250 KG purple chemical powder K PK92
2	<i>Rescue equipment</i>	☛ Approach tools and equipment
3	<i>Capability for removal of disabled aircraft</i>	☛ To be coordinated with the procedures of the aerodrome operator Puerta del Sur S.A.
4	<i>Remarks</i>	

SUCM AD 2.2-7 SEASONAL AVAILABILITY – CLEARING

1	<i>Types of clearing equipment</i>	Nil
---	------------------------------------	-----

SUCM AD 2.2-8 APRONS, TAXIWAYS AND CHECK LOCATIONS/POSITIONS DATA

1	<i>Apron surface and strength</i>	☛ Surface: Asphaltic concrete ☛ Strength: 12/F/B/Y/T
	<i>Taxiway width, surface and strength</i>	☛ Width: 10.5 M ☛ Surface: Asphaltic concrete ☛ Strength: 12/F/B/Y/T
3	<i>Altimeter checkpoint location and elevation</i>	Nil
4	<i>VOR/INS checkpoints</i>	Nil
5	<i>Remarks</i>	Nil

SUCM AD 2.2-9 SURFACE MOVEMENT GUIDANCE AND CONTROL SYSTEM AND MARKINGS

1	<i>Use of aircraft stand ID signs, TWY guide lines and visual docking/parking guidance system of aircraft stands</i>	☛ Aircraft stands identification signs. Taxiway centre line signs.
2	<i>RWY and TWY markings and LGT</i>	☛ RWY 17: <u>Markings</u> : THR; RWY designation; RWY centre line and aiming point. <u>LGT</u> : THR identification; THR; RWY edge and RWY end. ☛ RWY 35: <u>Markings</u> : THR; RWY designation; RWY centre line and aiming point. <u>LGT</u> : THR identification; THR; RWY edge and RWY end. ☛ TWY A: <u>Markings</u> : holding position and TWY centre line. <u>LGT</u> : TWY edge lights.
3	<i>Stop bars</i>	Nil
4	<i>Remarks</i>	☛ AD signalman service by the AD Operator.

SUCM AD 2.2-10 AERODROME OBSTACLES

<i>In Area 2</i>					
<i>OBST ID/ Designation</i>	<i>OBST type</i>	<i>OBST position</i>	<i>ELEV/HGT</i>	<i>Markings/ Type, colour</i>	<i>Remarks</i>
a	b	c	d	e	f
No data					

<i>In Area 3</i>					
<i>OBST ID/ Designation</i>	<i>OBST type</i>	<i>OBST position</i>	<i>ELEV/HGT</i>	<i>Markings/ Type, colour</i>	<i>Remarks</i>
a	b	c	d	e	f
No data					

SUCM AD 2.2-11 METEOROLOGICAL INFORMATION PROVIDED

1	<i>Associated MET Office</i>	☛ Through OMA/OVM (Aeronautical Meteorology Department)
2	<i>Hours of service MET Office outside hours</i>	As AD Operator
3	<i>Office responsible for TAF preparation Periods of validity</i>	Through SUCA
4	<i>Trend forecast Interval of issuance</i>	Nil
5	<i>Briefing/consultation provided</i>	O/R
6	<i>Flight documentation Language(s) used</i>	Nil
7	<i>Charts and other information available for briefing or consultation</i>	O/R
8	<i>Supplementary equipment available for providing information</i>	Nil
9	<i>ATS units provided with information</i>	Through SUCA TWR
10	<i>Additional information (limitation of service, etc.)</i>	Nil

SUCM AD 2.2-12 RUNWAY PHYSICAL CHARACTERISTICS

<i>Designations RWY NR</i>	<i>TRUE BRG</i>	<i>Dimensions of RWY (M)</i>	<i>Strength (PCN) and surface of RWY and SWY</i>	<i>THR coordinates. RWY end coordinates. THR geoid undulation</i>	<i>THR elevation and highest elevation of TDZ of precision APP RWY</i>
1	2	3	4	5	6
17	162.78°	☛ 1 190 x 23	☛ 12/F/B/Y/T ☛ Asphaltic concrete	☛ 335737.26S ☛ 0581939.01W ☛ 335737.26S ☛ 0581939.01W GUND 16.5 M	THR 11 M/36 FT
35	342.78°	☛ 1 190 x 23	☛ 12/F/B/Y/T ☛ Asphaltic concrete	☛ 335814.16S 0581925.29W ☛ 335814.16S 0581925.29W GUND 16.5 M	☛ THR 11 M/36 FT
<i>Slope of RWY-SWY</i>	<i>SWY dimensions (M)</i>	<i>CWY dimensions (M)</i>	<i>Strip dimensions (M)</i>	<i>OFZ</i>	<i>Remarks</i>
7	8	9	10	11	12
☛ -0.08% / -0.03% / +0.05% / -0.02% / ☛ (131 M) (459 M) (470 M) (130 M)	Nil	Nil	☛ 1310 x 80	Nil	Nil
☛ +0.02% / -0.05% / +0.03% / +0.08% / ☛ (130 M) (470 M) (459 M) (131 M)	Nil	Nil	☛ 1310 x 80	Nil	Nil

SUCM AD 2.2-13 DECLARED DISTANCES

<i>RWY Designator</i>	<i>TORA (M)</i>	<i>TODA (M)</i>	<i>ASDA (M)</i>	<i>LDA (M)</i>	<i>Remarks</i>
1	2	3	4	5	6
17	☛ 1190	☛ 1190	☛ 1190	☛ 1190	Nil
35	☛ 1190	☛ 1190	☛ 1190	☛ 1190	Nil

SUCM AD 2.2-14 APPROACH AND RUNWAY LIGHTING

<i>RWY Desig- nator</i>	<i>APCH LGT type LEN INTST</i>	<i>THR LGT colour WBAR</i>	<i>VASIS (MEHT) PAPI</i>	<i>TDZ, LGT LEN</i>	<i>RWY Centre Line LGT Length, spacing, colour, INTST</i>	<i>RWY edge LGT LEN, spacing colour INTST</i>	<i>RWY End LGT colour WBAR</i>	<i>SWY LGT LEN (M) colour</i>	<i>Remarks</i>
1	2	3	4	5	6	7	8	9	10
17	Nil	☛Green	☛PAPI		Nil	☛1190 M, 49.5 M, White Amber	☛Red	Nil	Nil
35	Nil	☛Green	☛PAPI		Nil	☛1190 M, 49.5 M, White Amber	☛Red	Nil	Nil

SUCM AD 2.2-15 OTHER LIGHTING, SECONDARY POWER SUPPLY

1	<i>ABN/IBN location, characteristics and hours of operation</i>	☛ABN: Installation on a central lighting column to the W of the apron IBN: Nil
2	<i>LDI location and LGT Anemometer location and LGT</i>	☛WDI located at 135 M from THR 17 and 40 M from RWY centre line. ☛Anemometer: located at 618 M from THR 17 and 40 M from RWY centre line.
3	<i>TWY edge and centre line lighting</i>	☛Edge: Blue lights Centre: Nil
4	<i>Secondary power supply/switch-over time</i>	☛70 KVA generator with automatic entry
5	<i>Remarks</i>	Nil

SUCM AD 2.2-16 HELICOPTER LANDING AREA

1	<i>Coordinates TLOF or THR of FATO</i>	Nil
2	<i>TLOF and/or FATO elevation M/FT</i>	Nil
3	<i>TLOF and FATO area dimensions, surface, strength, marking</i>	Nil
4	<i>True and MAG BRG FATO</i>	Nil
5	<i>Declared distance available</i>	Nil
6	<i>APP and FATO lighting</i>	Nil
7	<i>Remarks</i>	Nil

SUCM AD 2.2-17 ATS AIRSPACE

1	<i>Designation and lateral limits</i>	Carmelo FIZ Arc of 10 NM (18.5 KM) centred at 335758S/0581931W, limited by Montevideo FIR
2	<i>Vertical limits</i>	SFC up to FL 055
3	<i>Airspace classification</i>	G
4	<i>ATS unit call sign Language(s)</i>	Carmelo Aerodrome Information Spanish
5	<i>Transition altitude</i>	900 M
6	<i>Remarks</i>	Nil

SUCM AD 2.2-18 ATS COMMUNICATION FACILITIES

<i>Service designation</i>	<i>Call sign</i>	<i>Frequency</i>	<i>Hours of operation</i>	<i>Remarks</i>
1	2	3	4	5
AFIS	Carmelo Aerodrome Information	118.3 MHZ 122.1 MHZ	As AD	
ATIS		☛ 127.875 MHZ	As AD	

SUCM AD 2.2-19 RADIO NAVIGATION AND LANDING AIDS

<i>Type of aid, MAG VAR, Type of supported OP (for VOR/ILS/MLS, give declination)</i>	<i>ID</i>	<i>Frequency</i>	<i>Hours of operation</i>	<i>Position of transmitting antenna coordinates</i>	<i>Elevation of DME transmitting antenna</i>	<i>Remarks</i>
1	2	3	4	5	6	7
Nil	Nil	Nil	Nil	Nil	Nil	

✎ SUCM AD 2.2-20 LOCAL TRAFFIC REGULATIONS

Nil.

☛ **SUCM AD 2.2-21 NOISE ABATEMENT PROCEDURES**

Nil.

✎ SUCM AD 2.2-22 FLIGHT PROCEDURES

Nil.

**INTENTIONALLY
LEFT BLANK**

SUCM AD 2.2-24 CHARTS RELATED TO AN AERODROME

Aerodrome/Heliport Chart – ICAO	AD 2.2-15
Aerodrome Obstacle Chart – ICAO Type A (RWY 17/35)	AD 2.2-17
Visual Approach Chart – ICAO	AD 2.2-19

**INTENTIONALLY
LEFT BLANK**

AERODROME/HELIPORT
CHART - ICAO

33°57'58"S **ELEV 11**
058°19'31"W **(36)**

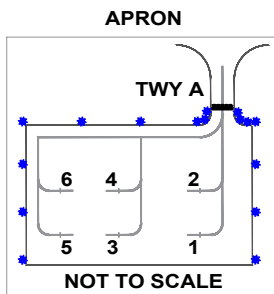
AFIS 118.3 - 122.1
ATIS 127.875

CARMELO/Intl

RWY	DIRECTION	THR	GUND	BEARING STRENGTH
17	173°	33°57'37.26"S 58°19'39.01"W	16.5 M	12/F/B/Y/T
35	353°	33°58'14.16"S 58°19'25.29"W	16.5 M	Runway, taxiway and apron

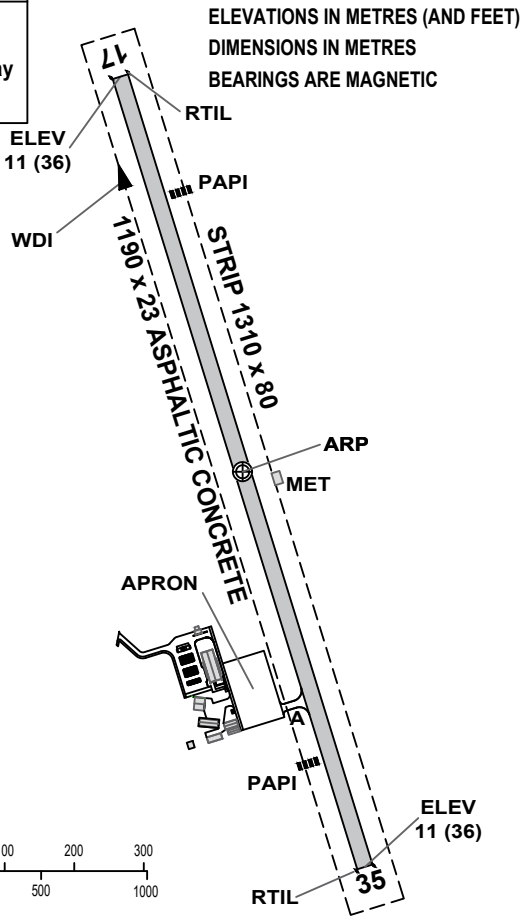
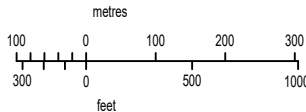
VAR 10° W 2020
ANNUAL RATE 1.0° W
OF CHANGE

TAXIWAYS 10.5 WIDE



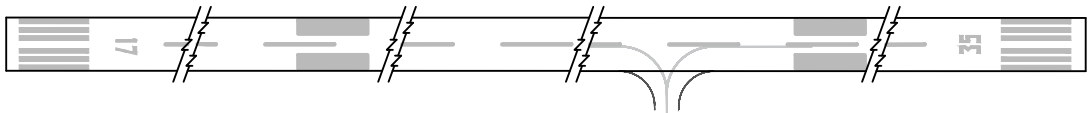
INS COORDINATES FOR
AIRCRAFT STANDS

1	33°58'06.93"S	058°19'31.88"W
2	33°58'06.74"S	058°19'31.15"W
3	33°58'05.81"S	058°19'32.29"W
4	33°58'05.62"S	058°19'31.57"W
5	33°58'05.01"S	058°19'32.59"W
6	33 58 04.82"S	058°19'31.86"W

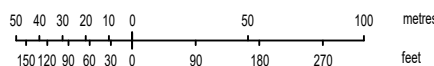
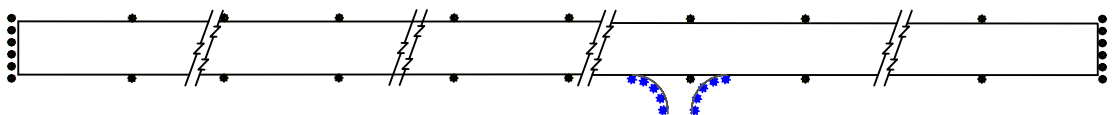


Change:
ATIS FREQ

MARKING AIDS RWY 17/35 AND EXIT TWY



LIGHTING AIDS RWY 17/35 AND EXIT TWY



**INTENTIONALLY
LEFT BLANK**

AERODROME OBSTACLE CHART - ICAO

TYPE A (OPERATING LIMITATIONS)

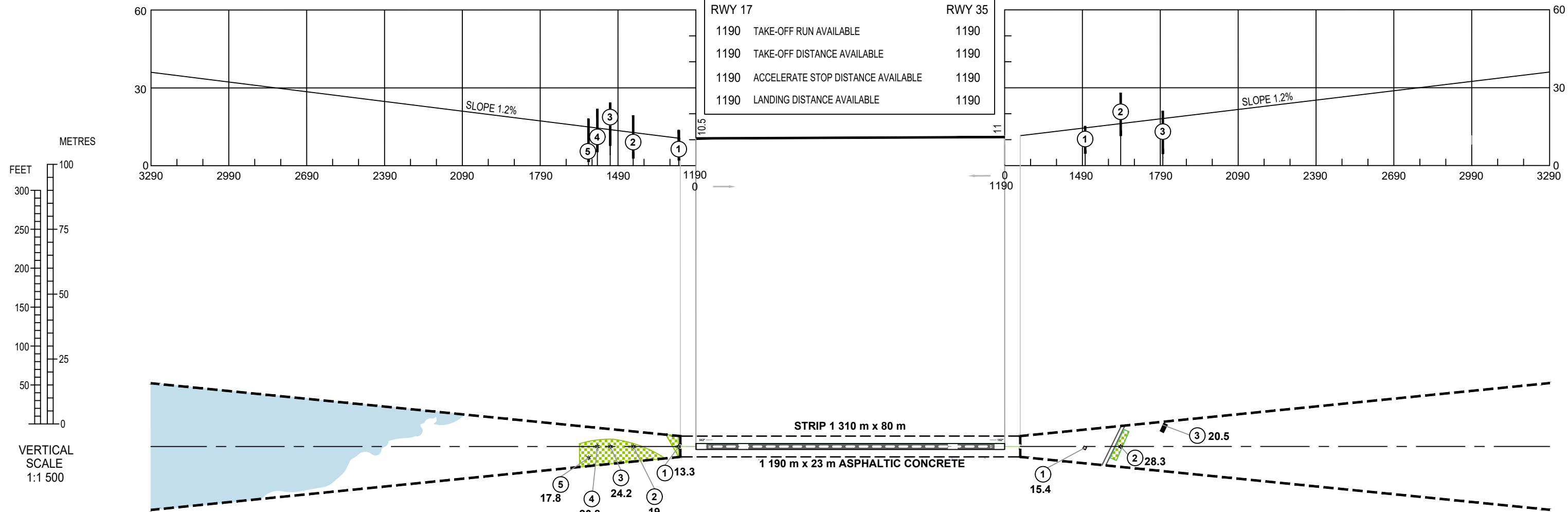
DIMENSIONS AND ELEVATIONS IN METRES

MAGNETIC VARIATION 10° W JAN 2020

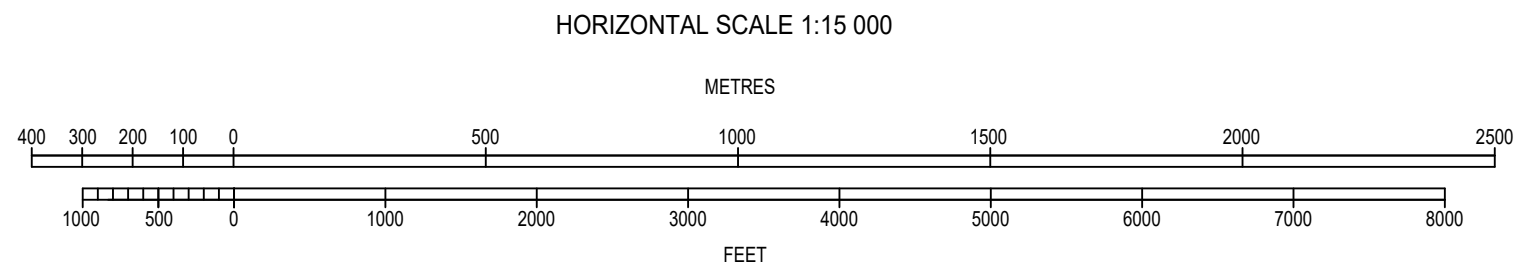
RWY 17 / 35

DECLARED DISTANCES

RWY 17	RWY 35
1190 TAKE-OFF RUN AVAILABLE	1190
1190 TAKE-OFF DISTANCE AVAILABLE	1190
1190 ACCELERATE STOP DISTANCE AVAILABLE	1190
1190 LANDING DISTANCE AVAILABLE	1190



LEGEND	
IDENTIFICATION NUMBER	①
TREE OR SHRUB	*
HIGHWAY	====
POLE, TOWER, SPIRE, ANTENNA, ETC.	⊙
BUILDING OR LARGE STRUCTURE	■
RAILROAD	—+—+—+—
TERRAIN CONTOUR	~
TERRAIN PENETRATING OBSTACLE PLANE	▨



ORDER OF ACCURACY
HORIZONTAL 00 M
VERTICAL 00 M

Change:
New chart

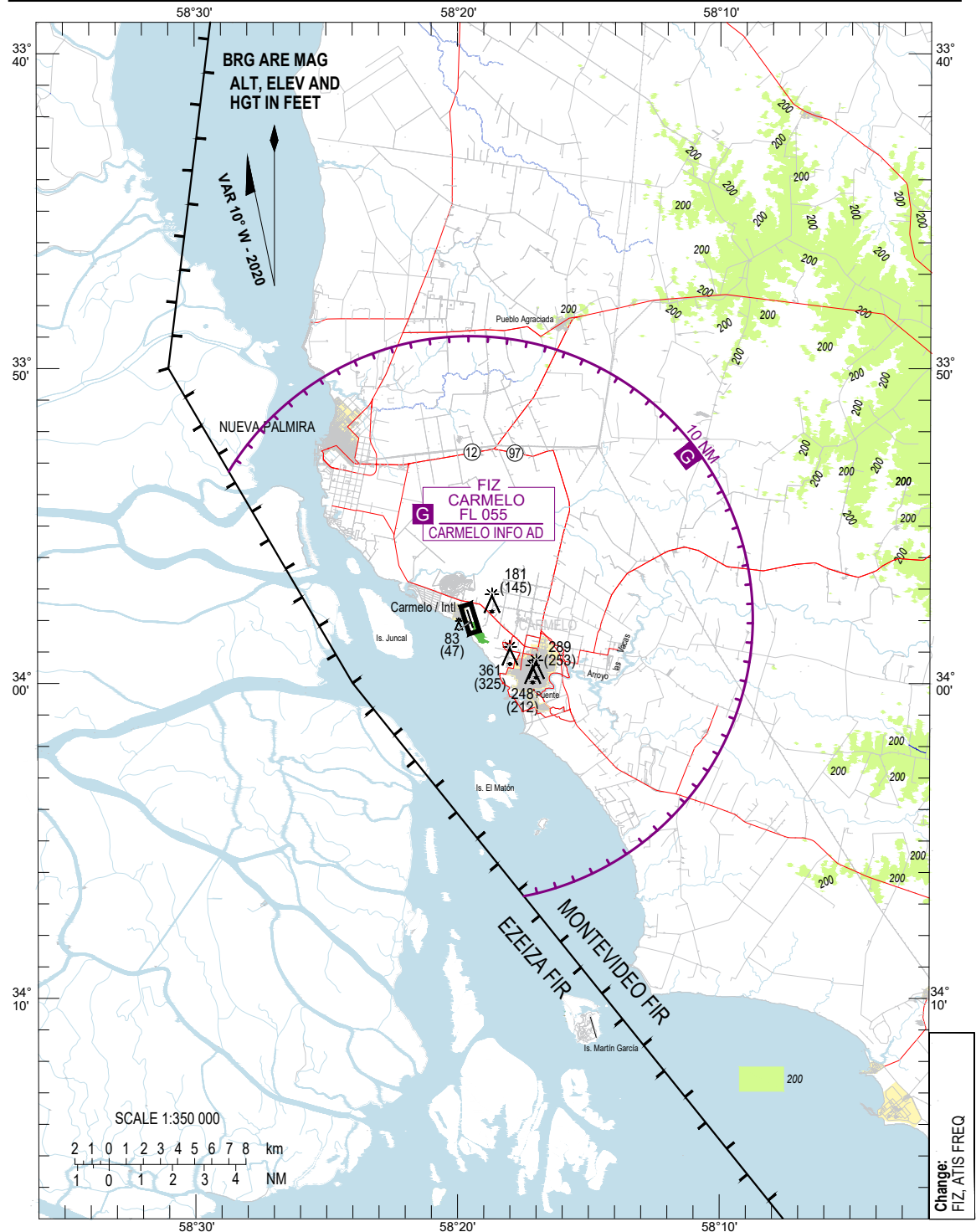
**INTENTIONALLY
LEFT BLANK**

VISUAL
APPROACH
CHART - ICAO

AERODROME ELEV **36 FT**
HEIGHTS RELATED TO
AD ELEV

ACC 128.5 - 126.3
AFIS 118.3 - 122.1
ATIS 127.875

CARMELO / Intl



**INTENTIONALLY
LEFT BLANK**