

**SUPPLEMENT  
AIP URUGUAY**

Telephone: 598 2604 0408 ext.

5101, 5203

Telefax: 598 2604 0067

AFTN: SUMUYNYX

e-mail: aispub@dinacia.gub.uy

Dirección Nacional de Aviación Civil e Infraestructura Aeronáutica

Departamento AIS

Aeropuerto Intl de Carrasco "Gral. Cesáreo L. Berisso"

14000 Canelones

**AIP/SUP**

**NR S 001**

**16 JUN 2025**

---

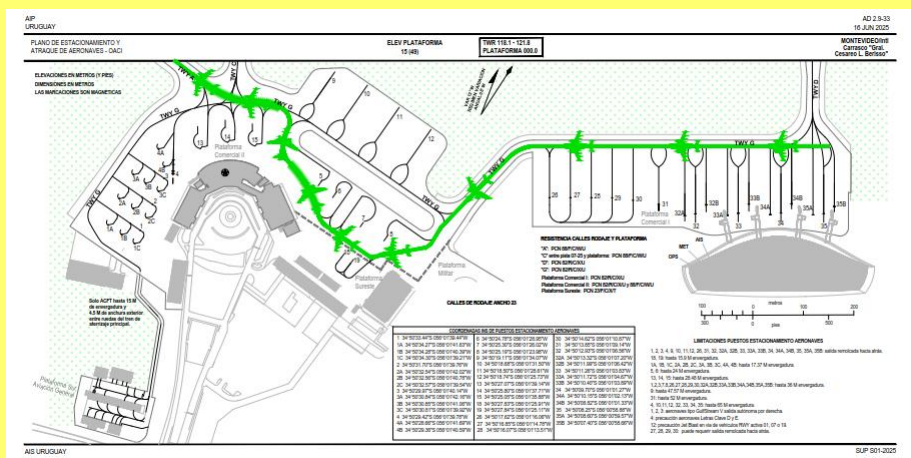
**SUMU - MONTEVIDEO/Intl de Carrasco "Gral. Cesáreo L. Berisso"**

From: 16 JUN 2025 03:00 UTC

To: 14 JUL 2025 02:59 UTC

**MODIFICATIONS TO SUMU MOVEMENT AREA**

Due to construction works on Runway 07/25, operations to and from Runway 01/19 shall be instructed by ATC, based on converging traffic, as follows:

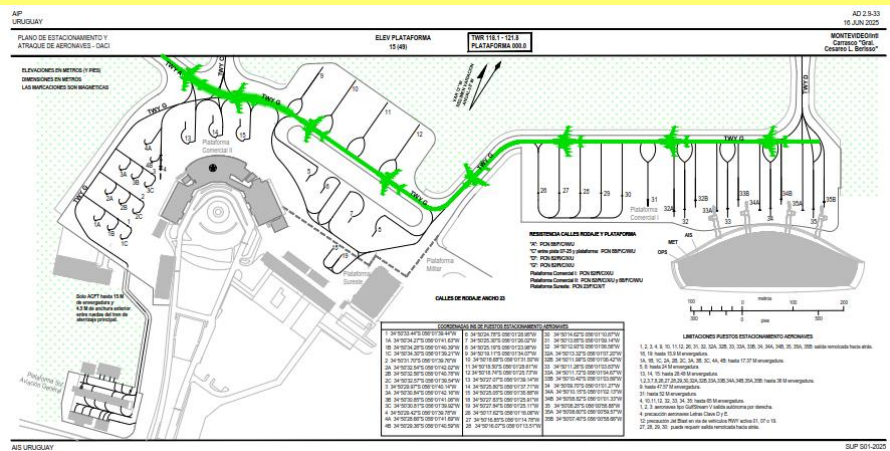
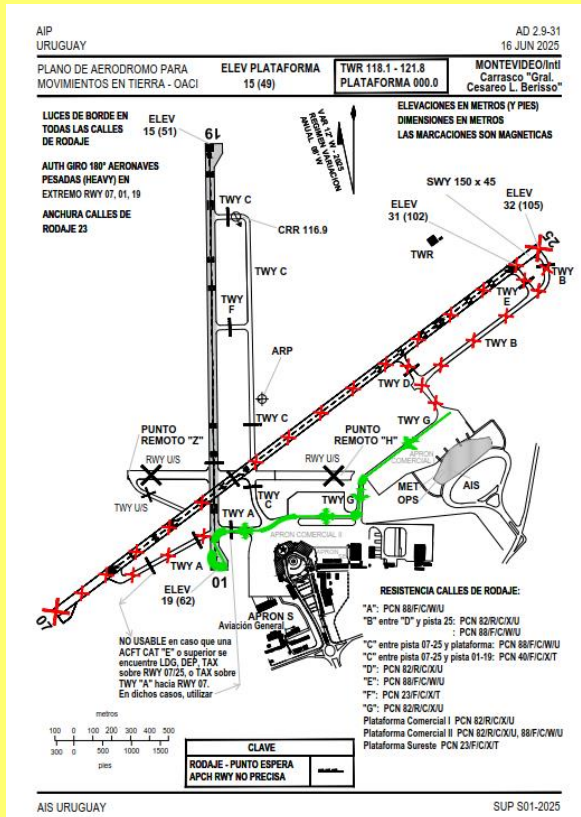


# 1. RUNWAY 01

## 1.1 Taxiing for take-off

### 1.1.2 From APRON Comercial I (Parking Stands 26 to 35):

- A, B, C, D or E Aircraft Type: Taxi through TWY G to TWY A, then RWY 01/19 to THR 01, and turn 180° for take-off.

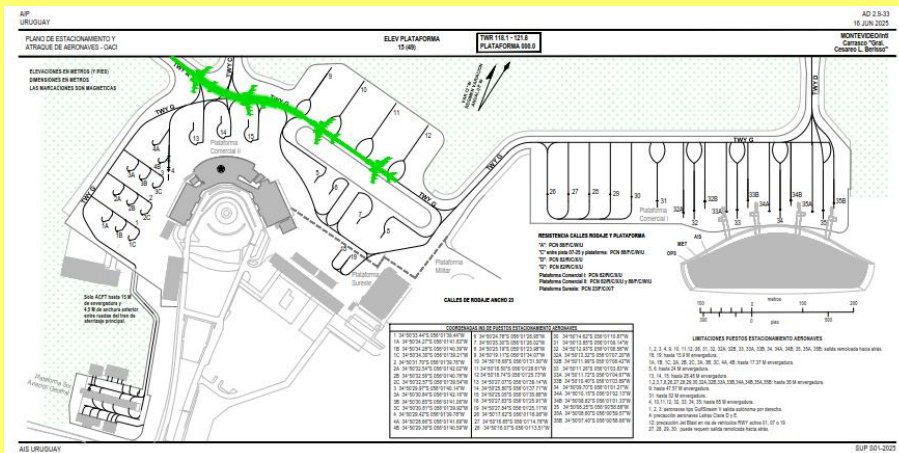
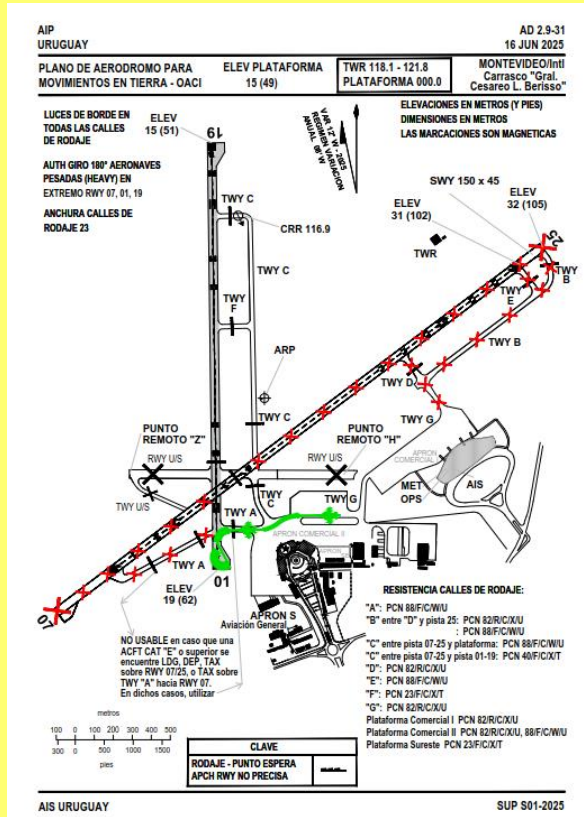


# 1. RUNWAY 01

## 1.1 Taxiing for take-off

### 1.1.3 From APRON Comercial II (Parking Stands 9 to 12):

- Taxi through TWY G to TWY A, then RWY 01/19 to THR 01, and turn 180° for take-off.

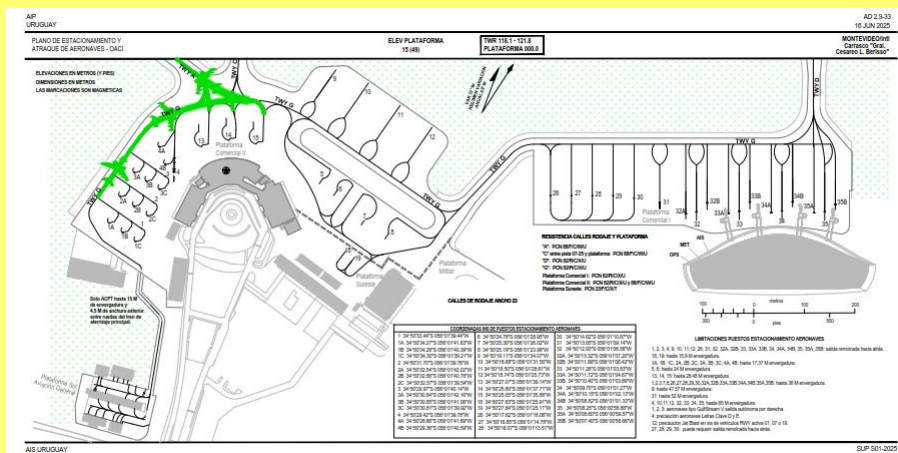
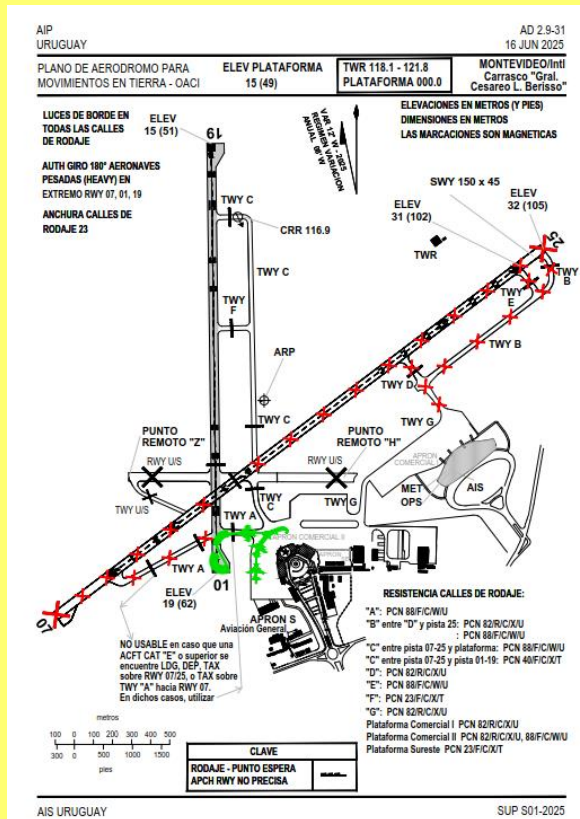


## 1. RUNWAY 01

### 1.1 Taxiing for take-off

**1.1.4 From APRON Comercial II (Parking Stands 1 to 4 and 13 to 15):**

- Taxi through TWY G to TWY A, then RWY 01/19 to THR 01, and turn 180° for take-off.

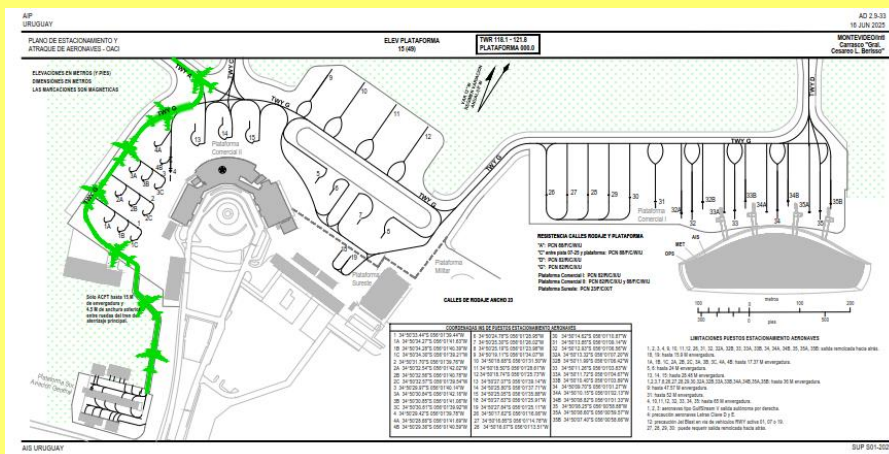
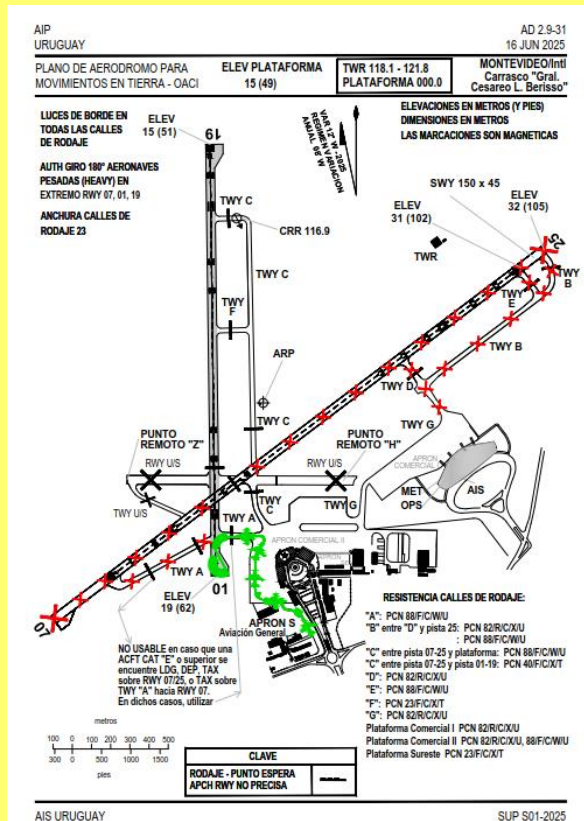


## 1. RUNWAY 01

### 1.1 Taxiing for take-off

### 1.1.5 From APRON S General Aviation:

- Taxi through TWY G to TWY A, then RWY 01/19 to THR 01, and turn 180° for take-off.

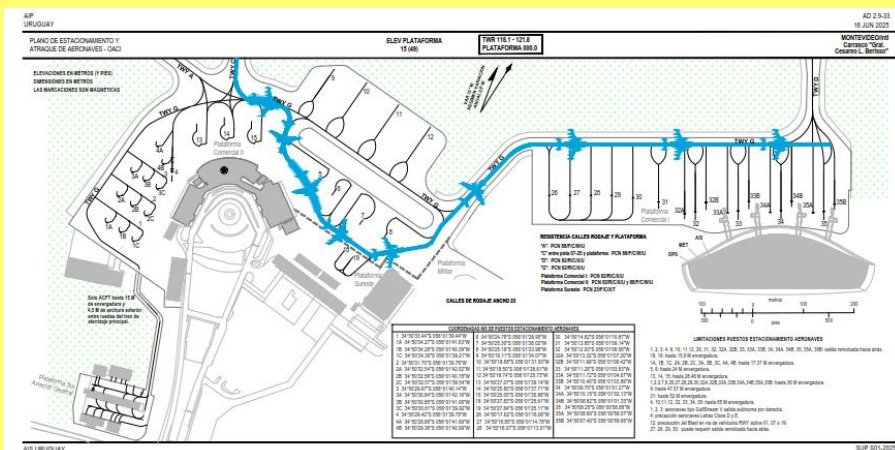
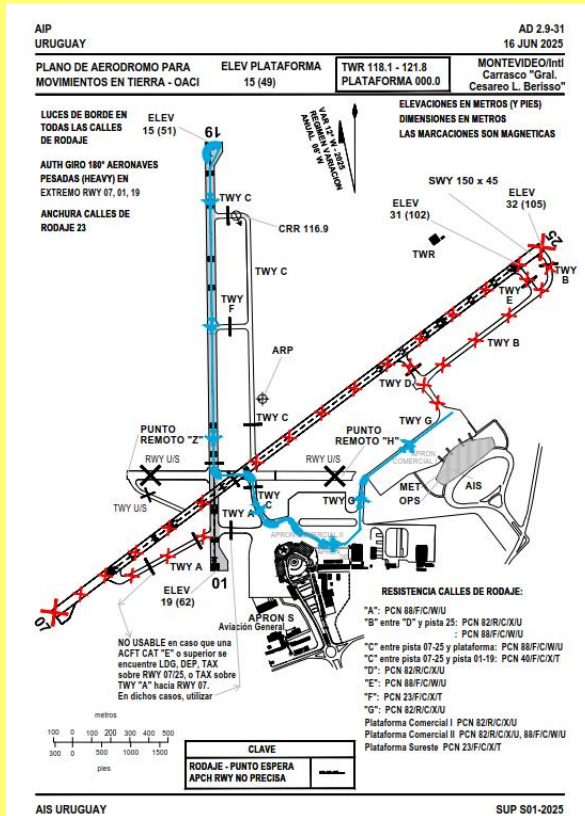


# 1. RUNWAY 01

## 1.2 Taxiing from landing

### 1.2.1 To APRON Comercial I (Parking Stands 26 to 35):

- A, B or C Aircraft Type: backtrack RWY 01/19, taxi through portion of RWY 07/25, then TWY C, then TWY G to APRON SE, continue to TWY G and then to PRKG APRON Comercial I.

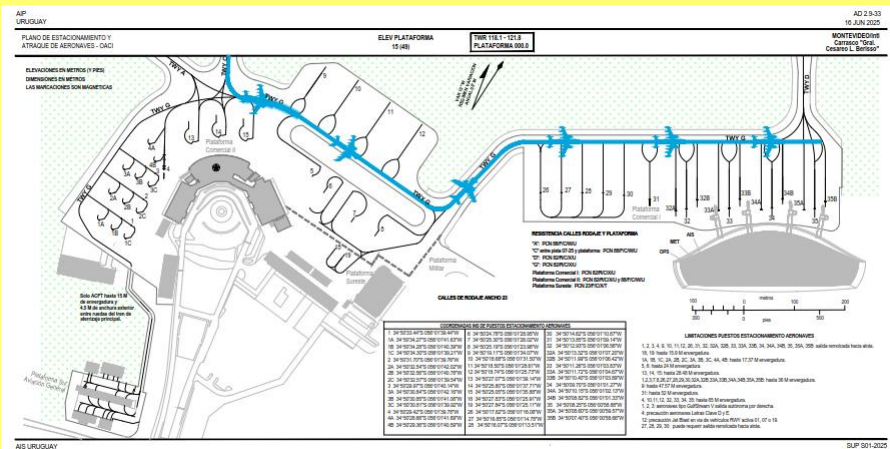
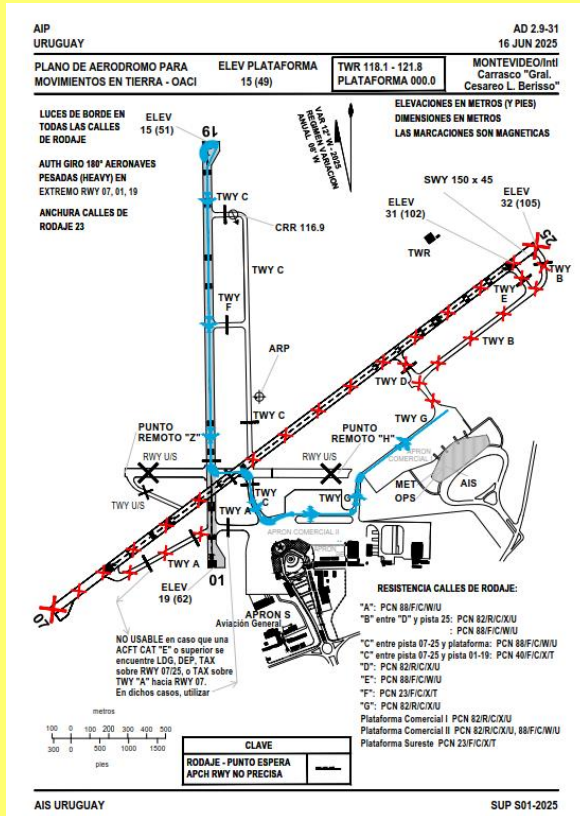


# 1. RUNWAY 01

## 1.2 Taxiing from landing

### 1.2.2 To APRON Comercial I (Parking Stands 26 to 35):

- A, B, C, D or E Aircraft Type: backtrack RWY 01/19, taxi through portion of RWY 07/25, then TWY C, then TWY G and continue to PRKG APRON Comercial I.

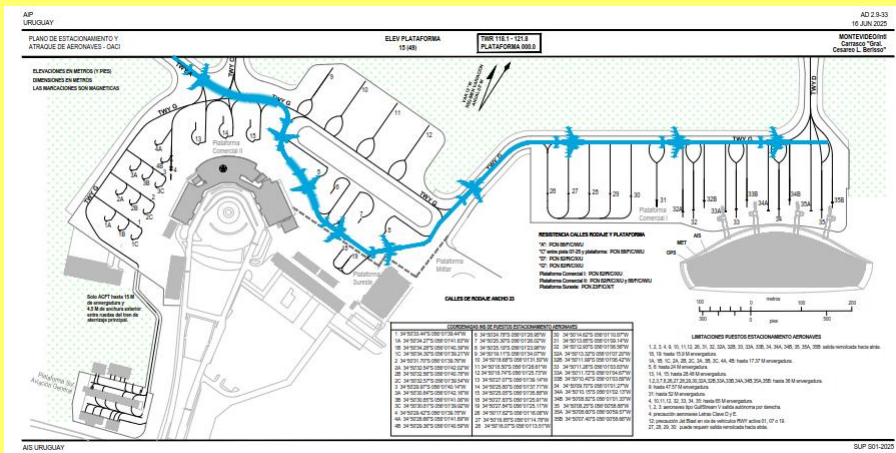
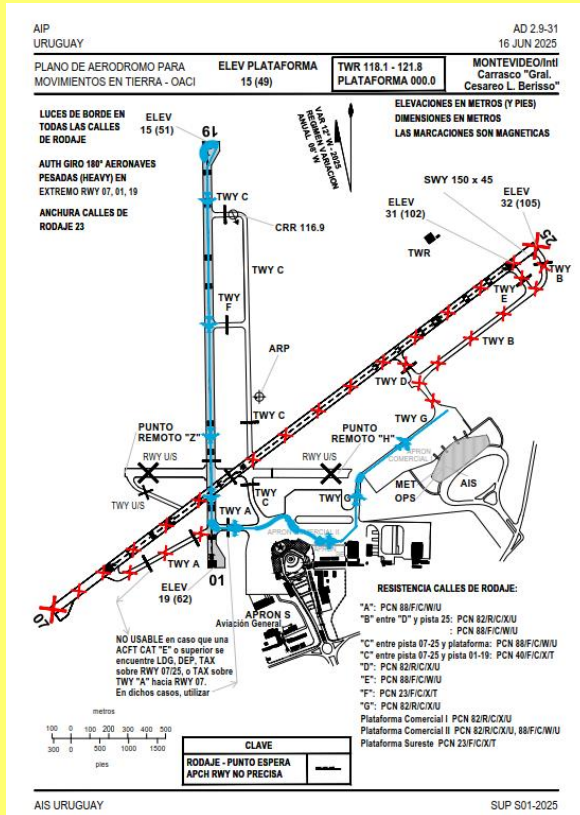


# 1. RUNWAY 01

## 1.2 Taxiing from landing

### 1.2.3 To APRON Comercial I (Parking Stands 26 to 35):

- A, B or C Aircraft Type: backtrack RWY 01/19, taxi through TWY A, then TWY G to APRON SE, continue onto TWY G, then onto PRKG APRON Comercial I.

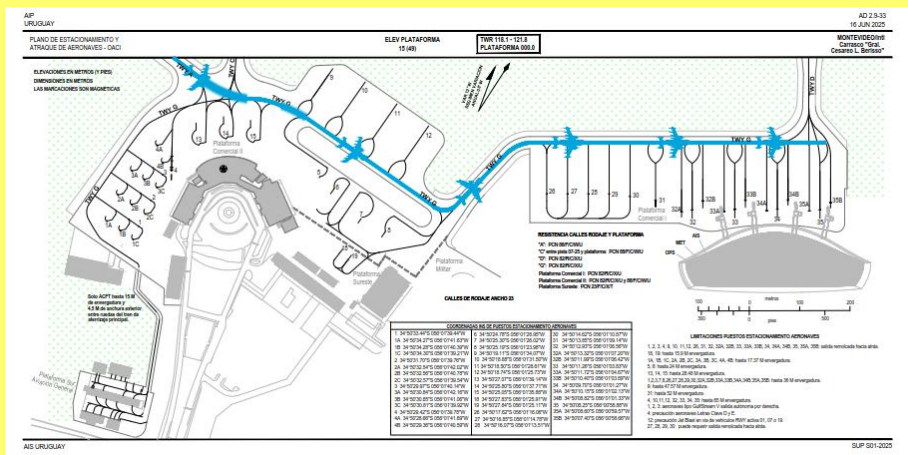
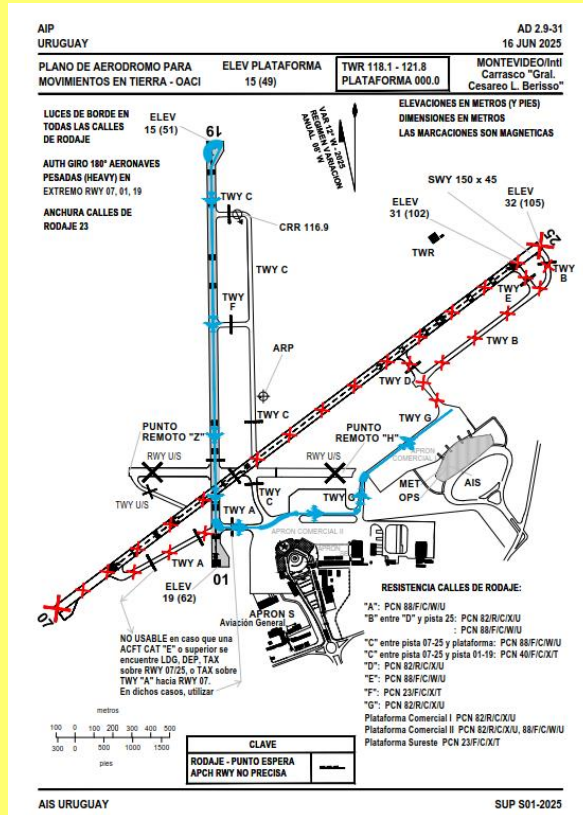


# 1. RUNWAY 01

## 1.2 Taxiing from landing

### 1.2.4 To APRON Comercial I (Parking Stands 26 to 35):

- A, B, C, D or E Aircraft Type: backtrack RWY 01/19, taxi through TWY A, then TWY G and continue to PRKG APRON Comercial I.

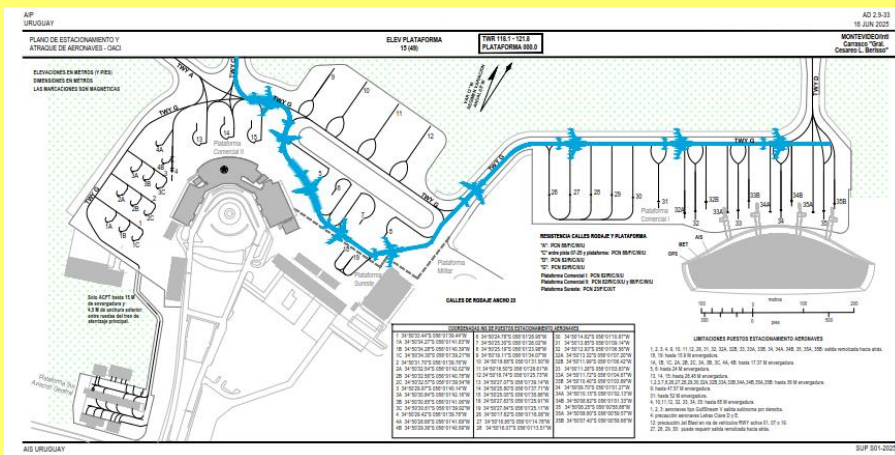
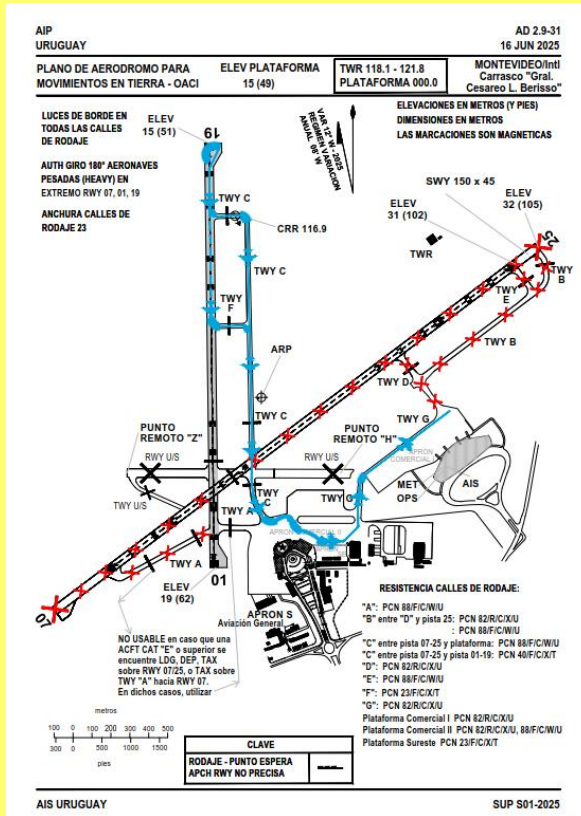


# 1. RUNWAY 01

## 1.2 Taxiing from landing

### 1.2.5 To APRON Comercial I (Parking Stands 26 to 35):

- A, B or C Aircraft Type: From TWY C North or TWY F, taxi through TWY C, then TWY G to APRON SE, continue onto TWY G, then onto PRKG APRON Comercial I.

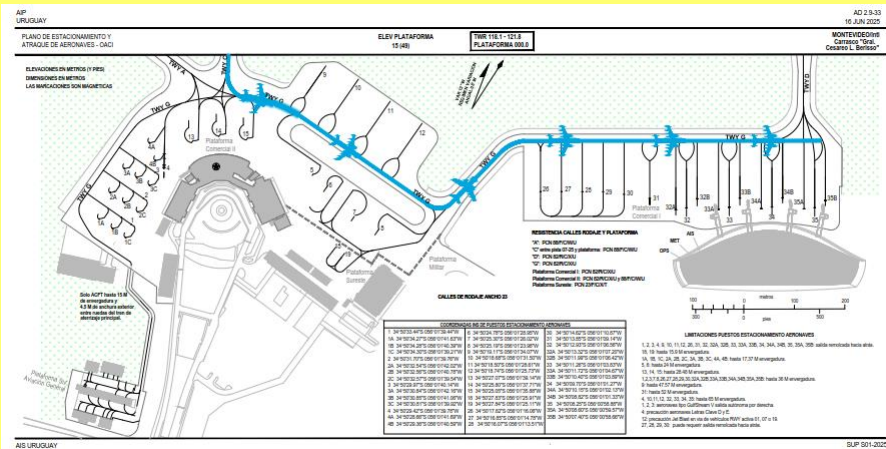
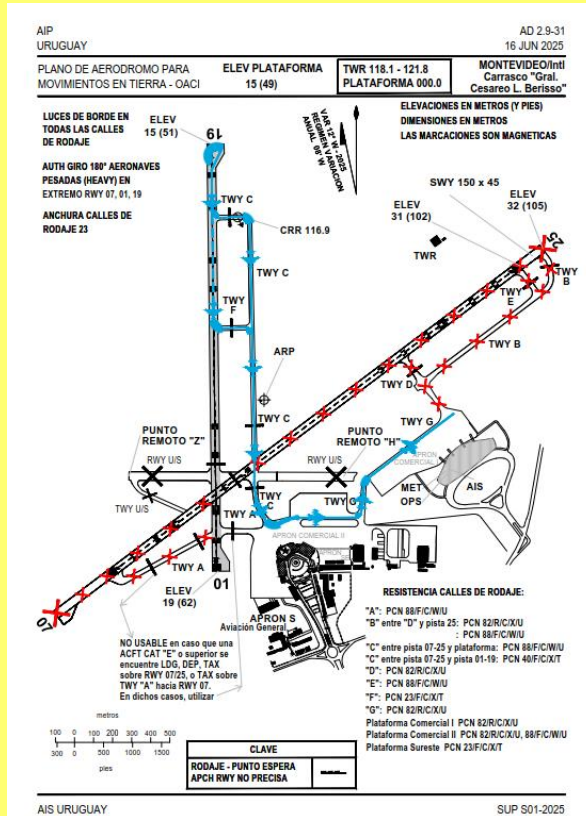


# 1. RUNWAY 01

## 1.2 Taxiing from landing

### 1.2.6 To APRON Comercial I (Parking Stands 26 to 35):

- A, B or C Aircraft Type: From TWY C North or TWY F, taxi through TWY C, then TWY G, then onto PRKG APRON Comercial I.

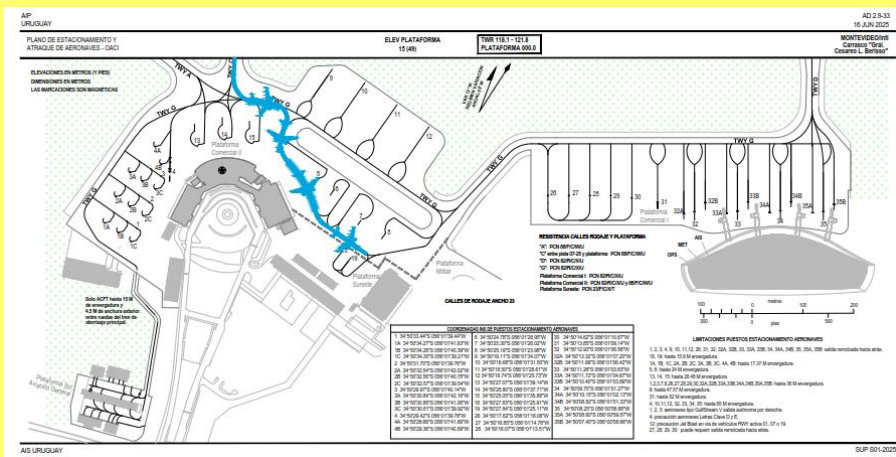
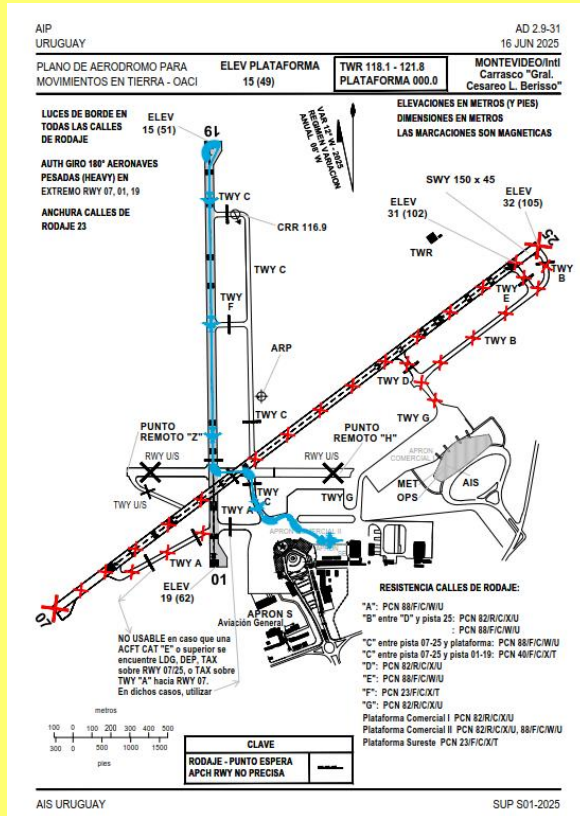


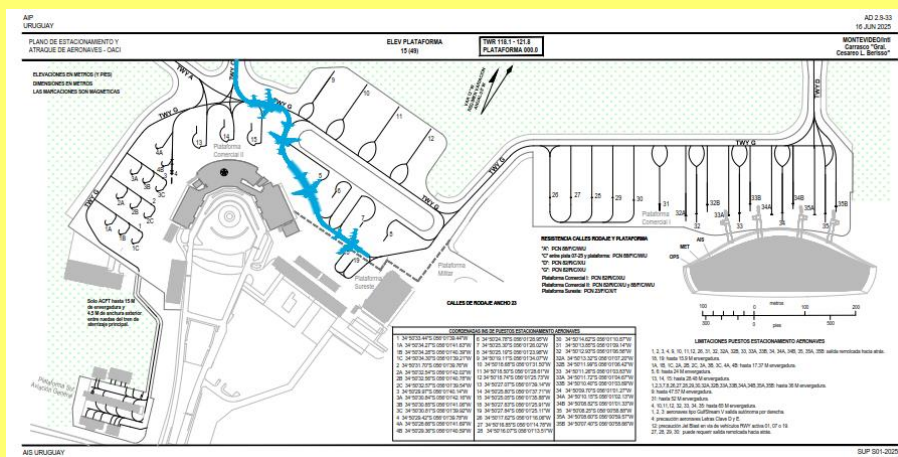
# 1. RUNWAY 01

## 1.2 Taxiing from landing

### 1.2.7 To APRON Comercial II:

- Backtrack RWY 01/19, taxi through portion of RWY 07/25, then TWY C, then TWY G to APRON SE.



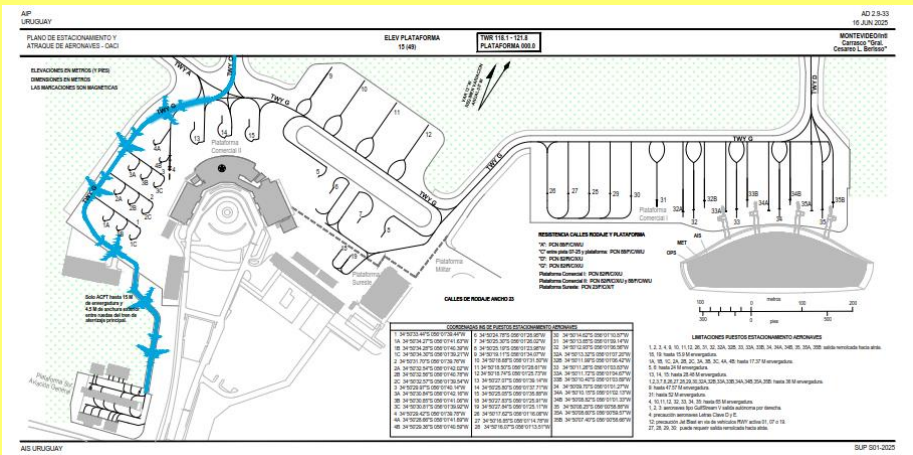
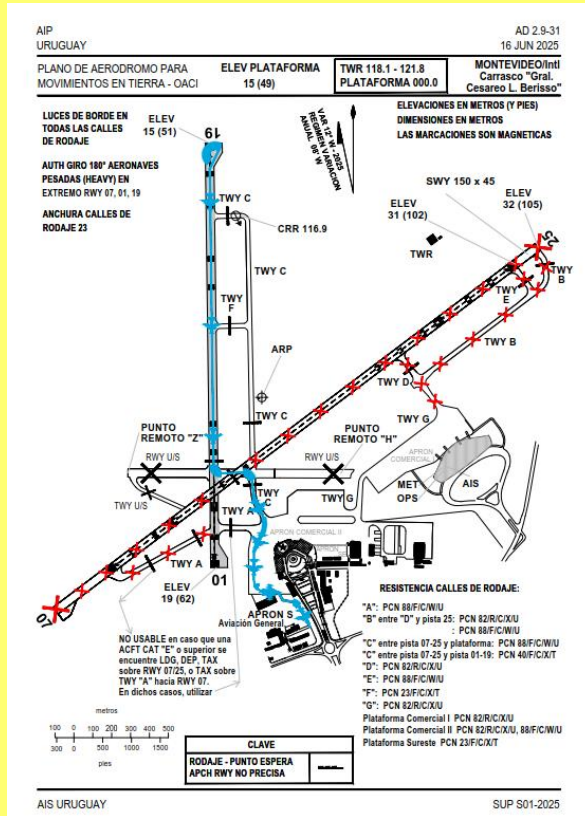


# 1. RUNWAY 01

## 1.2 Taxiing from landing

### 1.2.9 To APRON S General Aviation:

- Backtrack RWY 01/19, taxi through portion of RWY 07/25, then TWY C, then TWY G To APRON S General Aviation.

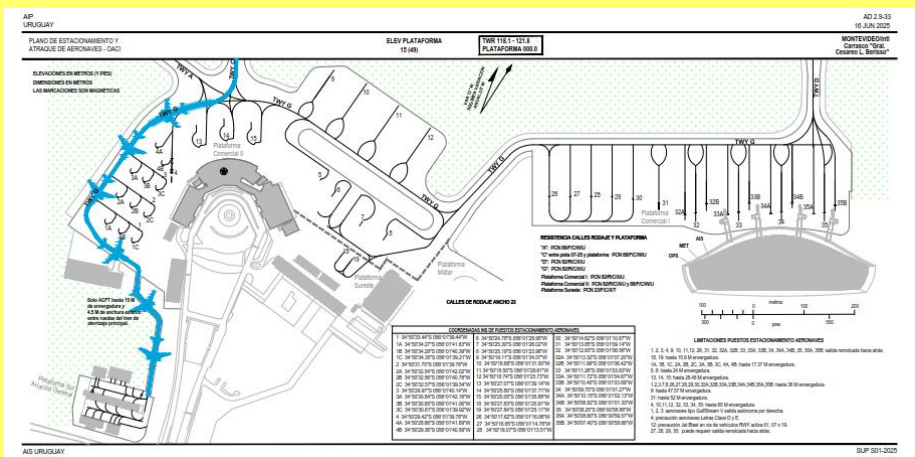
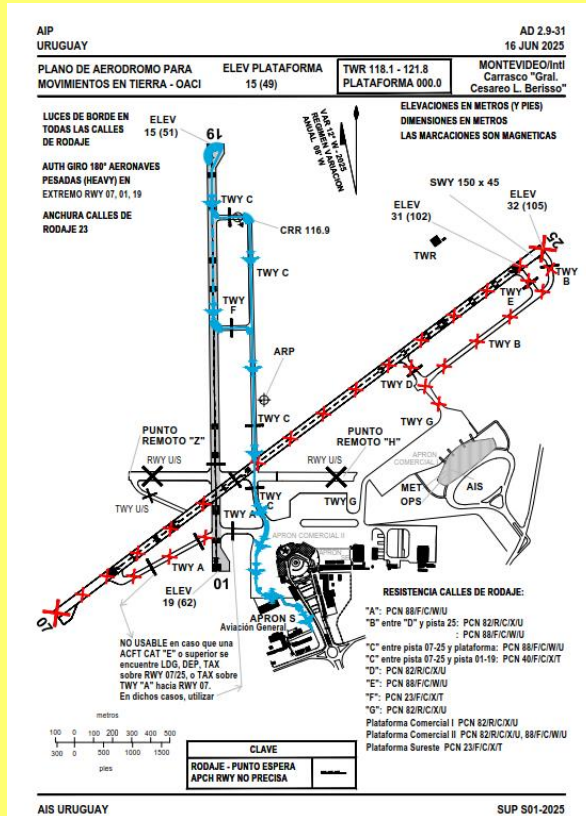


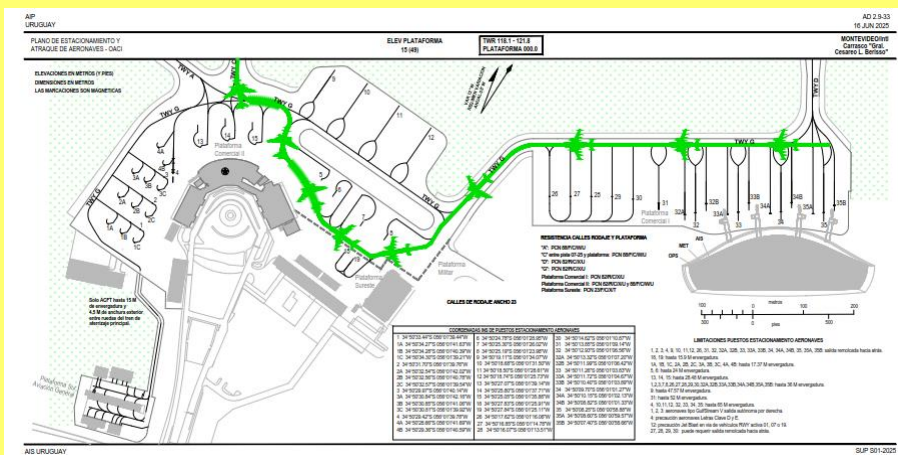
# 1. RUNWAY 01

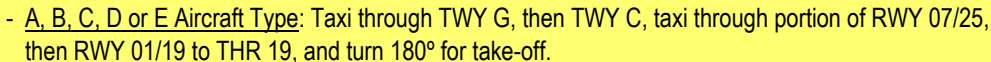
## 1.2 Taxiing from landing

### 1.2.10 To APRON S General Aviation:

- A or B Aircraft Type (B only towed): from TWY C North or TWY F, taxi through TWY C, then TWY G To APRON S General Aviation





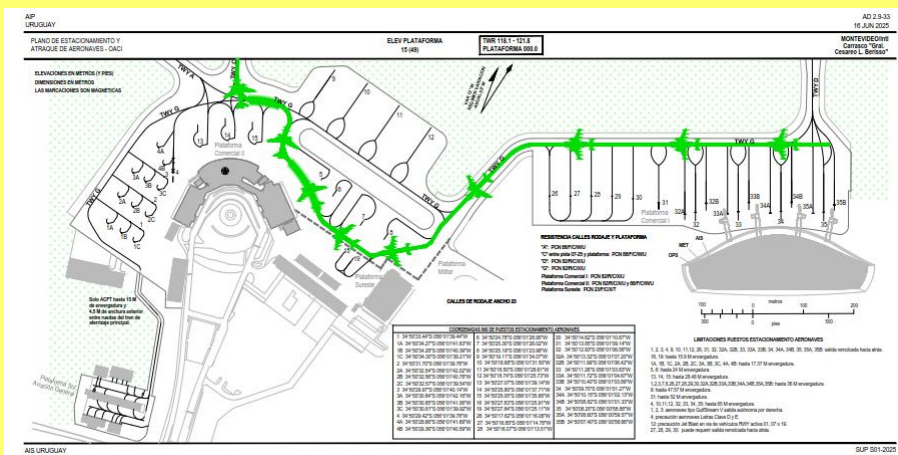
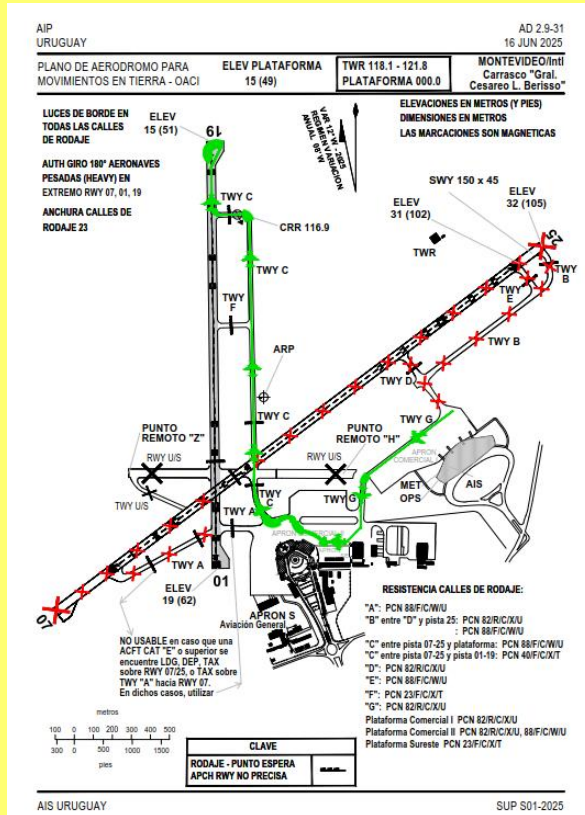


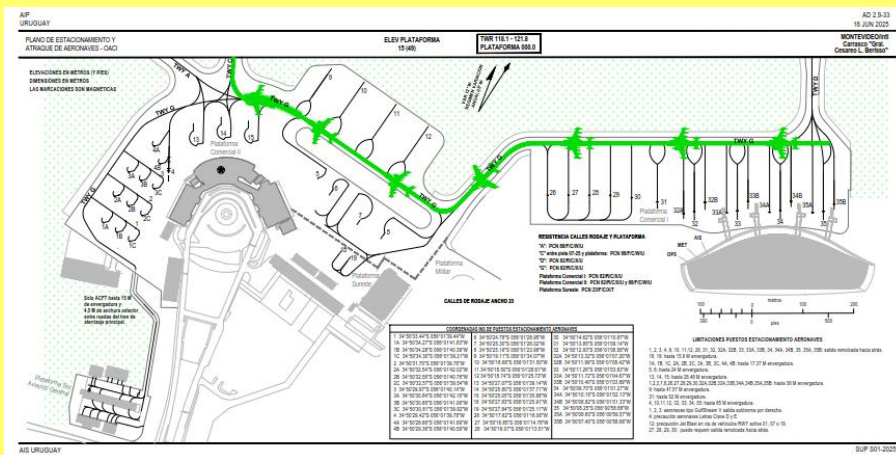
## 2. RUNWAY 19

### 2.1 Taxiing for take-off

#### 2.1.3 From APRON Comercial I (Parking Stands 26 to 35):

- A, B or C Aircraft Type: Taxi through TWY G to APRON SE, continue to TWY G to proceed to TWY C, then RWY 01/19 to THR 19, and turn 180° for take-off.



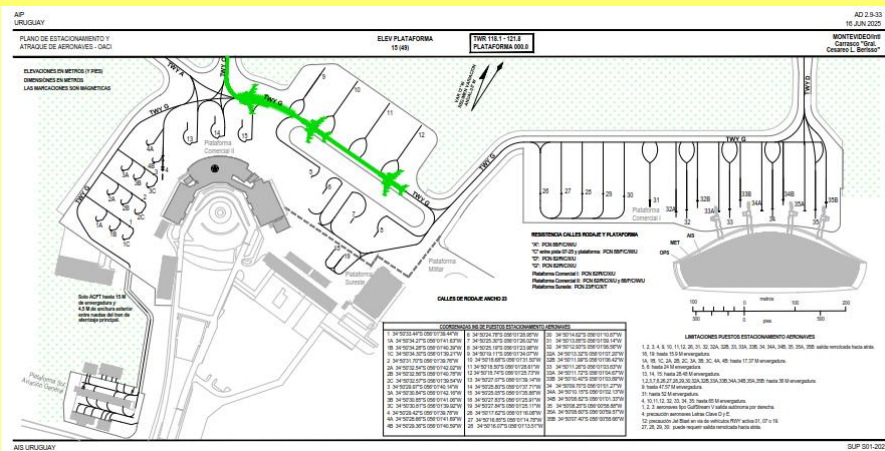
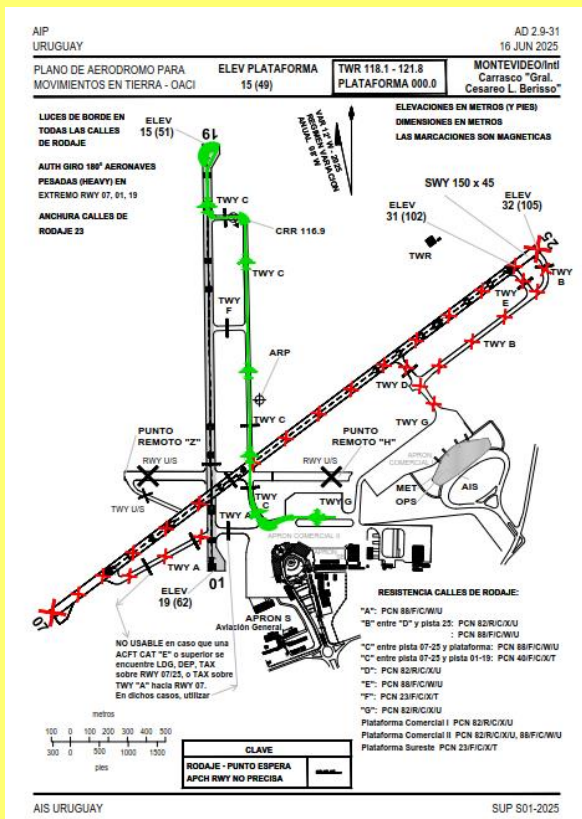


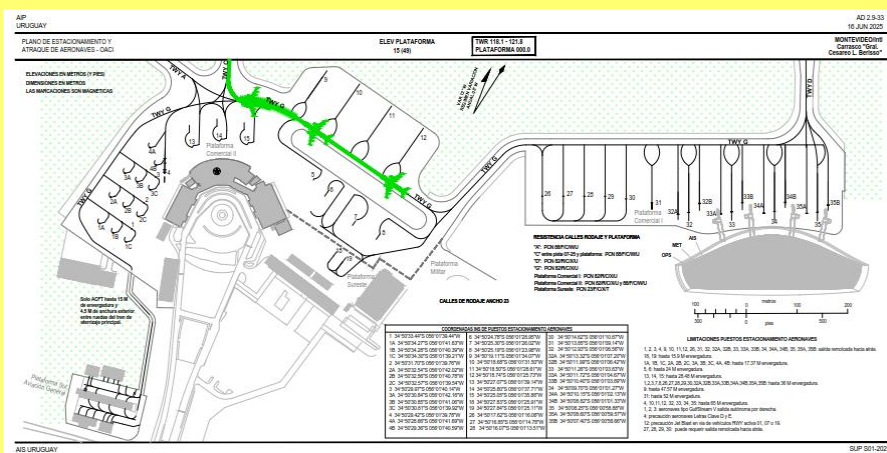
## 2. RUNWAY 19

## 2.1 Taxiing for take-off

**2.1.5 From APRON Comercial II (Parking Stands 9 to 12):**

- A, B or C Aircraft Type: Taxi through TWY G to proceed to TWY C, then RWY 01/19 to THR 19, and turn 180° for take-off.



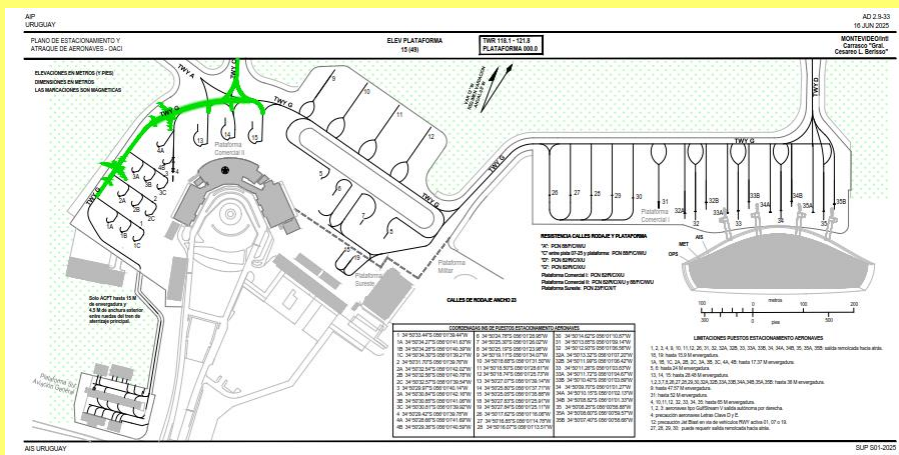
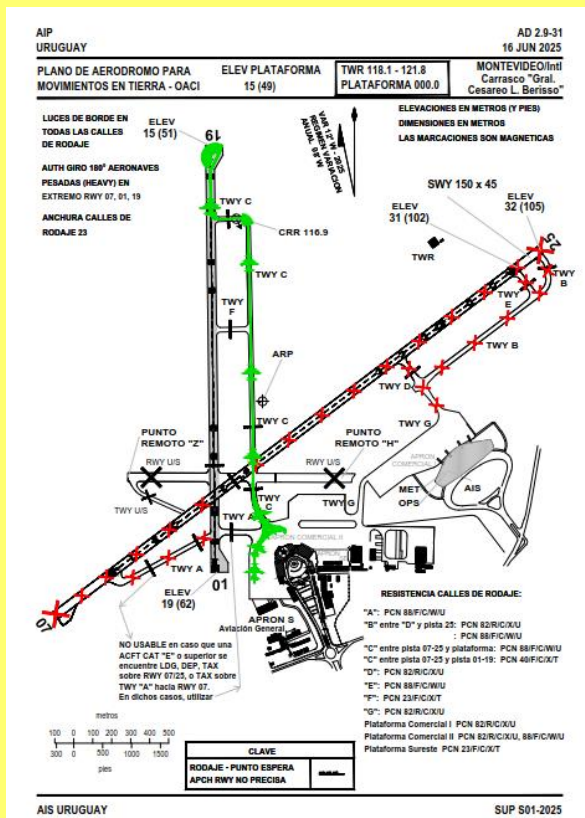


## 2. RUNWAY 19

## 2.1 Taxiing for take-off

**2.1.7 From APRON Comercial II (Parking Stands 1 to 4 and 13 to 15):**

- A, B or C Aircraft Type: Taxi through TWY G to proceed to TWY C, then RWY 01/19 to THR 19, and turn 180° for take-off.

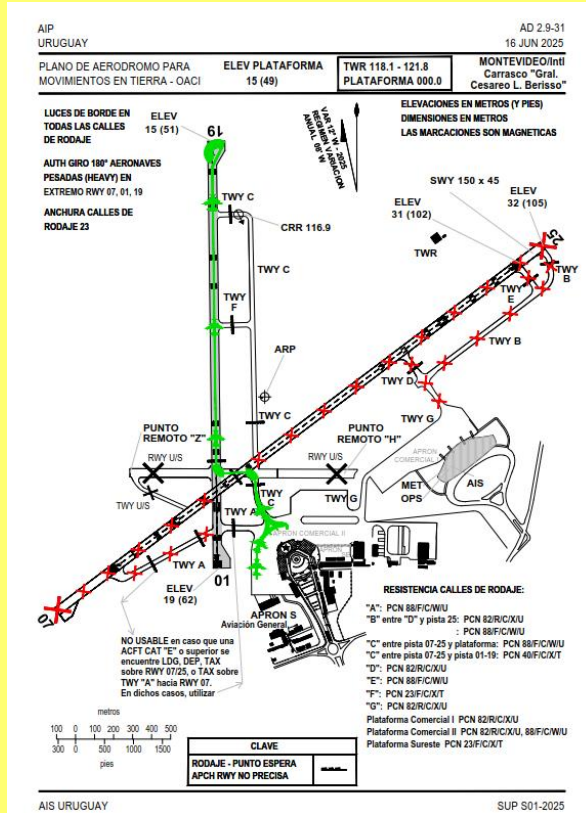


## 2. RUNWAY 19

### 2.1 Taxiing for take-off

#### 2.1.8 From APRON Comercial II (Parking Stands 1 to 4 and 13 to 15):

- A, B, C, D or E Aircraft Type: Taxi through TWY G to continue to TWY C, taxi through portion of RWY 07/25, then RWY 01/19 to THR 19, and turn 180° for take-off.

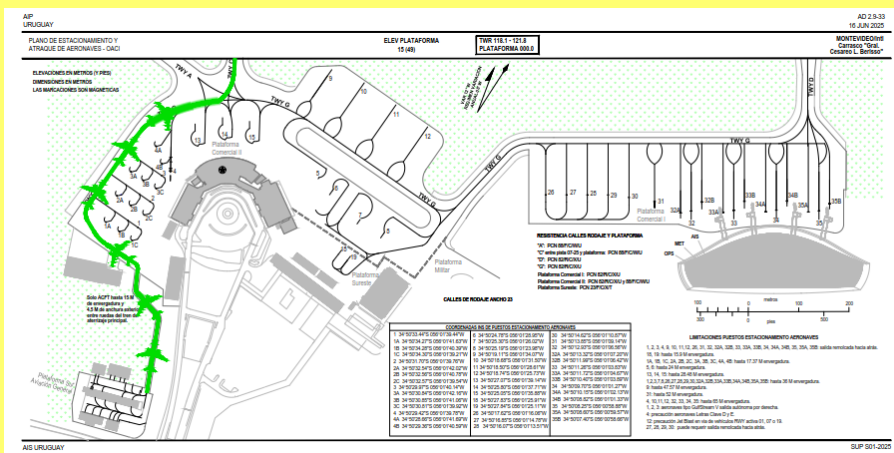
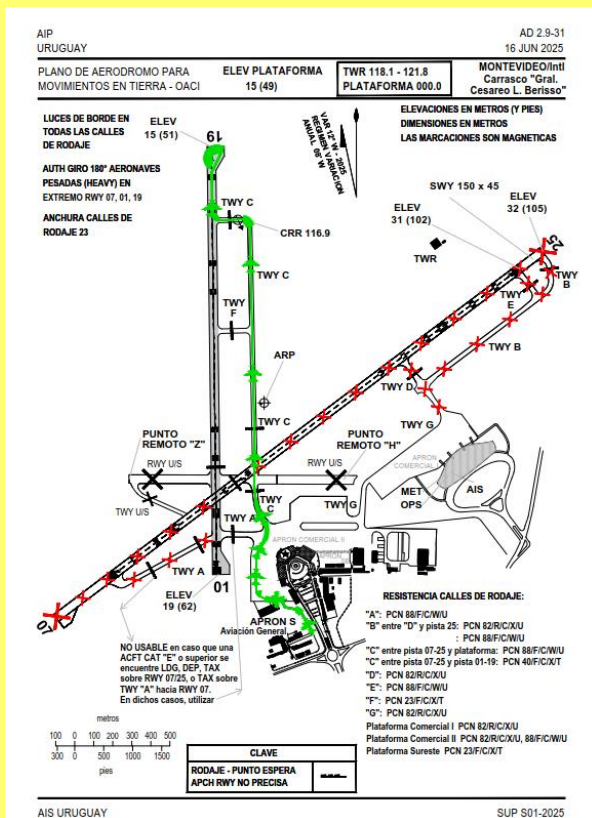


## 2. RUNWAY 19

## 2.1 Taxiing for take-off

### 2.1.9 From APRON S General Aviation:

- A or B Aircraft Type (B only towed): Taxi through TWY G to proceed to TWY C, then RWY 01/19 to THR 19, and turn 180° for take-off.

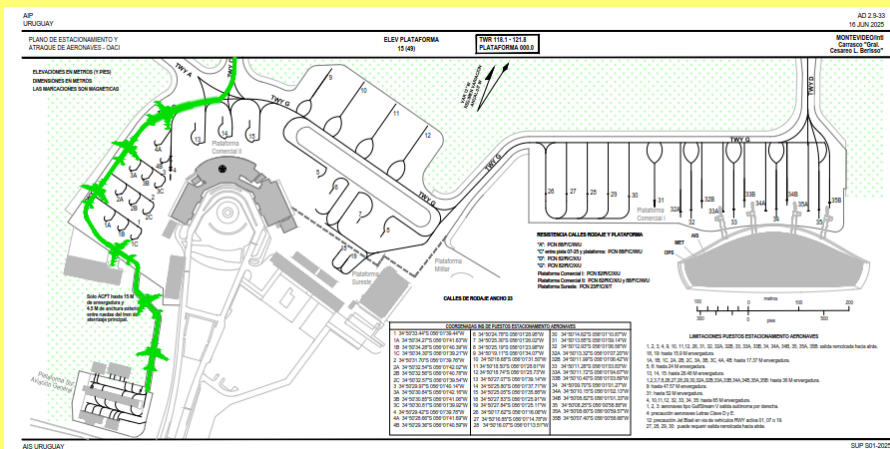
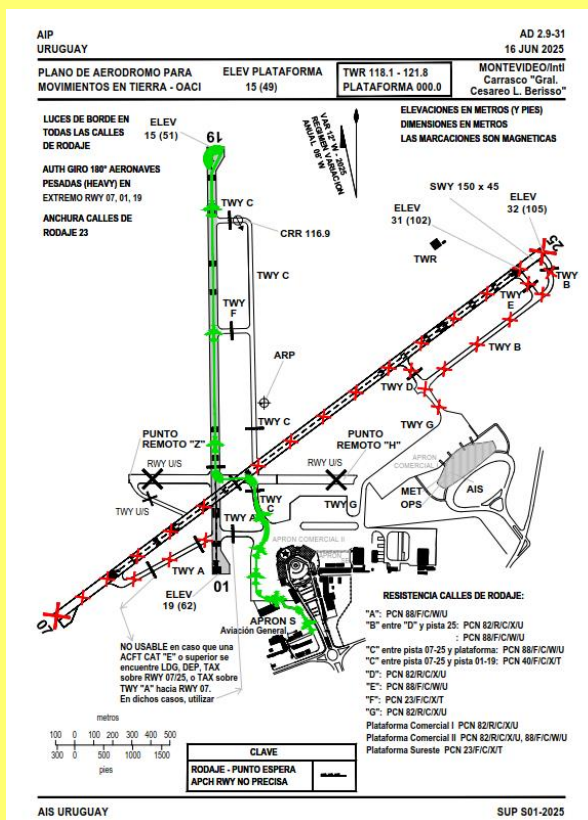


## 2. RUNWAY 19

## 2.1 Taxiing for take-off

#### 2.1.10 From APRON S General Aviation:

- A or B Aircraft Type (B only towed): Taxi through TWY G to continue to TWY C, taxi through portion of RWY 07/25, then RWY 01/19 to THR 19, and turn 180° for take-off.

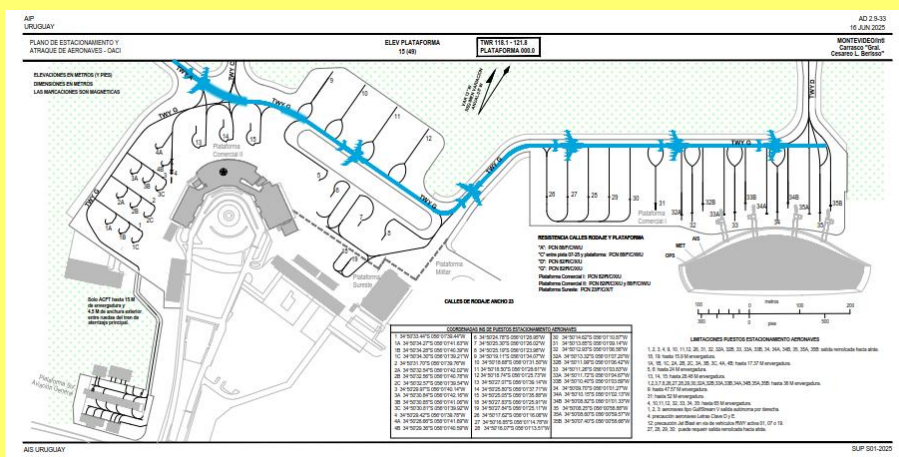
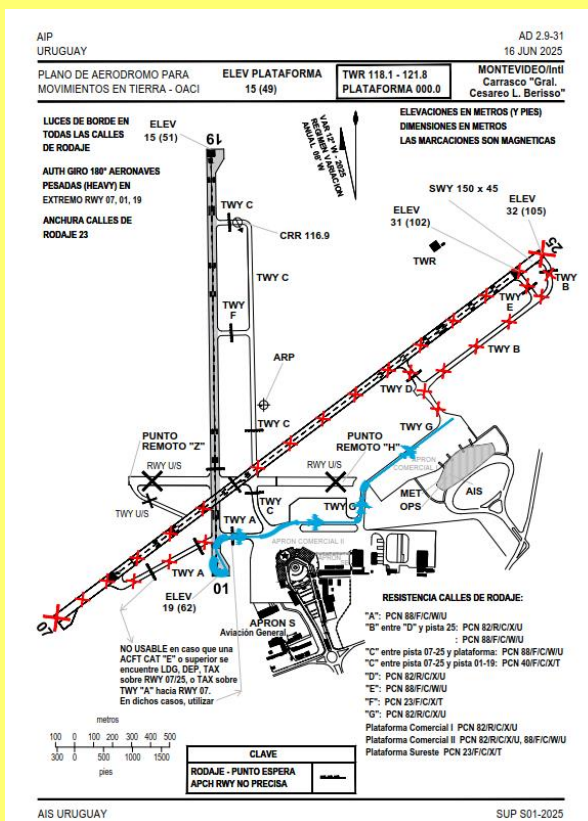


## 2. RUNWAY 19

## 2.2 Taxiing from landing

### 2.2.1 To APRON Comercial I (Parking Stands 26 to 35):

- A, B, C, D or E Aircraft Type: Backtrack RWY 01/19 (if required), taxi through TWY A, then TWY G and continue to PRKG APRON Comercial I.

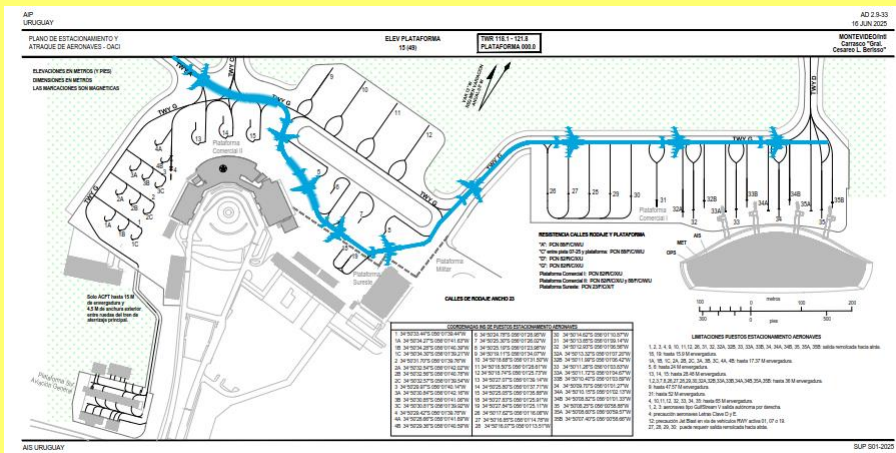
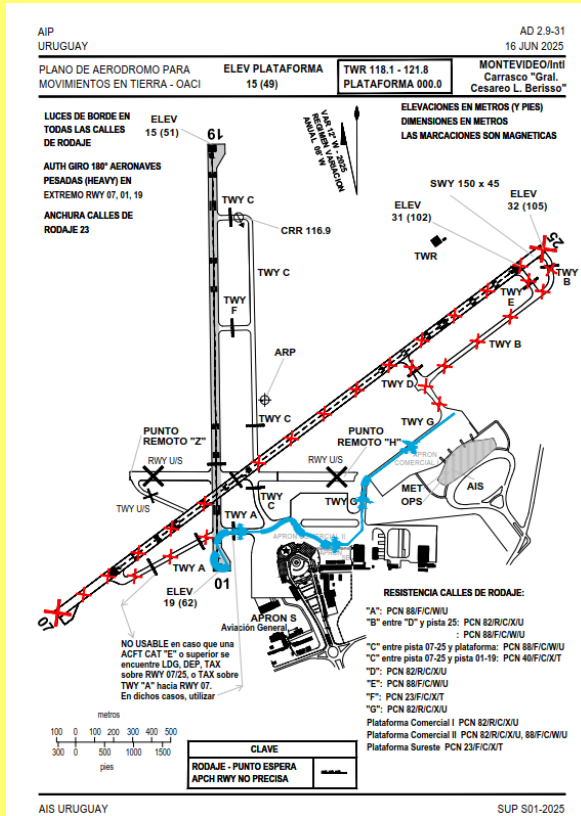


## 2. RUNWAY 19

### 2.2 Taxiing from landing

#### 2.2.2 To APRON Comercial I (Parking Stands 26 to 35):

- A, B or C Aircraft Type: Backtrack RWY 01/19 (if required), taxi through TWY A, then TWY G to APRON SE, continue onto TWY G, then onto PRKG APRON Comercial I.



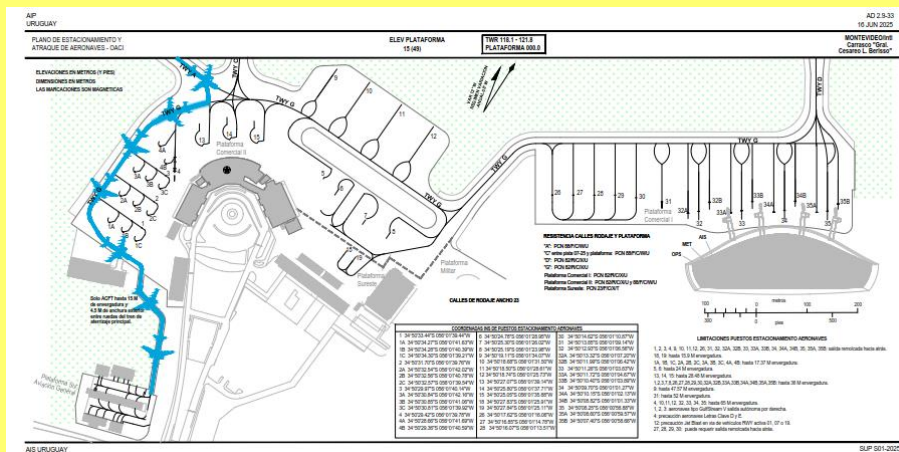
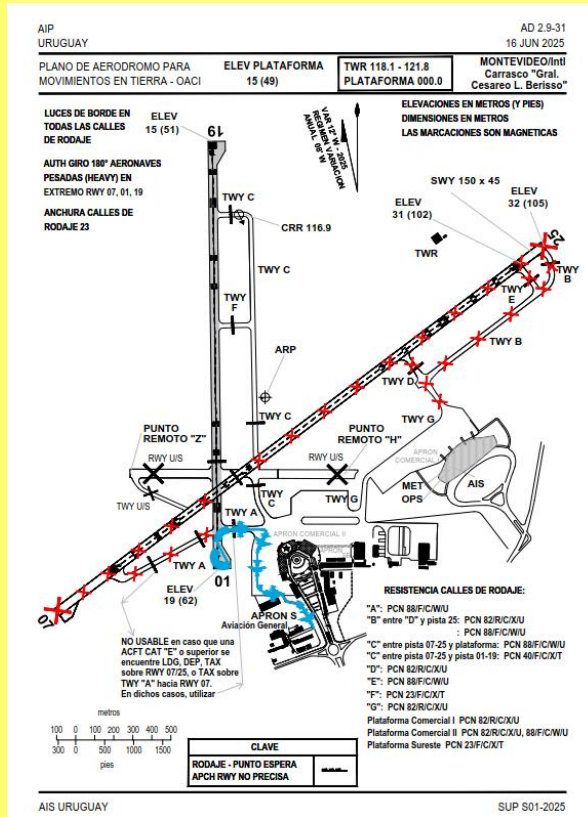


## 2. RUNWAY 19

### 2.2 Taxiing from landing

#### 2.2.4 To APRON S General Aviation:

- Backtrack RWY 01/19, taxi through TWY A, then TWY G to assigned PRKG.



### 3. ADDITIONAL INFORMATION

- 3.1 The operation of F Aircraft Type is not permitted due to 01/19 runway limitations.
- 3.2 Engines shall not be started in parking stands 34 and 35 due to the effects of turbine jets in the works area.
- 3.3 The air operator must notify in a timely manner if it expects one of its aircraft to arrive with an inoperative APU so that PDS Operations can assign it other parking stands.
- 3.4 A Aircraft Type shall perform the engine check prior to take-off on taxiway G, lateral to parking stand 3A. Under these circumstances, possible delays are expected during simultaneous taxiing to and from Apron S.
- 3.5 If an aircraft is undergoing engine testing in the sector and another aircraft is taxiing toward Apron S, the latter must enter a parking position to yield to the former. The position shall be assigned by the apron management service.
- 3.6 Pilots on engine tests must take the necessary precautions to avoid affecting aircraft parked in nearby positions.

***Remember to register the inclusion of AIRAC amendment on page GEN 0.3-1  
Record of AIP Supplements***

→→→→→→→→→→