

AD 2. AERODROMES**SURV AD 2.13-1 AERODROME LOCATION INDICATOR AND NAME**

SURV - RIVERA/Intl Presidente General (Piloto Aviador Militar) don Oscar D. Gestido

SURV 2.13-2 AERODROME GEOGRAPHICAL AND ADMINISTRATIVE DATA

1	<i>ARP coordinates and site at AD</i>	305810S 0552824W Mid point terminal building apron
2	<i>Direction and distance from (city)</i>	10 KM SE from the centre of the city
3	<i>Elevation/Reference temperature</i>	203 M (666 FT) / 31°C
4	<i>Geoid undulation at AD ELEV PSN</i>	14 M
5	<i>MAG VAR/Annual change</i>	☛ 14° W (JAN 2025) / 0.14° increasing
6	<i>AD operator, address, telephone, telefax, e-mail address, AFS address, website address</i>	Puerta del Sur S.A. Aeropuerto Intl de Rivera Presidente General Oscar D. Gestido Rivera Tel: 4622 4921, 4623 2644, +598 98454730 (Puerta del Sur) Telefax: 4622 4921 e-mail: operaciones.surv@aerpuertosuruguay.com.uy AFS: SURVYTYX
7	<i>Types of traffic permitted (IFR/VFR)</i>	☛ IFR/VFR
8	<i>Remarks</i>	Nil

SURV AD 2.13-3 OPERATIONAL HOURS

1	<i>AD Operator</i>	H24.
2	<i>Customs and immigration</i>	O/R – Office in the city
3	<i>Health and sanitation</i>	In the city
4	<i>AIS Briefing Office</i>	Nil
5	<i>ATS Reporting Office (ARO)</i>	MON - SUN from 10:00 to 22:00 UTC
6	<i>MET Briefing Office</i>	O/R – Office in the city
7	<i>ATS</i>	MON - SUN from 10:00 to 22:00 UTC
8	<i>Fuelling</i>	As AD Operator
9	<i>Handling</i>	As AD Operator
10	<i>Security</i>	H24
11	<i>De-icing</i>	Nil
12	<i>Remarks</i>	Nil

SURV AD 2.13-4 HANDLING SERVICES AND FACILITIES

1	<i>Cargo-handling facilities</i>	Nil
2	<i>Fuel/oil types</i>	☛AVGAS 100, JET A1 / Oil: Nil
3	<i>Fuelling facilities/capacity</i>	☛AVGAS 100: 1 tank 25.000 L ☛JET A1: 1 tank 30.000 L
4	<i>De-icing facilities</i>	Nil
5	<i>Hangar space for visiting aircraft</i>	Nil
6	<i>Repair facilities for visiting aircraft</i>	Nil
7	<i>Remarks</i>	☛115 V GPU unit with 28 V converter

SURV AD 2.13-5 PASSENGER FACILITIES

1	<i>Hotels</i>	In the city
2	<i>Restaurants</i>	In the city
3	<i>Transportation</i>	Taxis on the city
4	<i>Medical facilities</i>	In the city
5	<i>Bank and Post Office</i>	Nil
6	<i>Tourist Office</i>	Nil
7	<i>Remarks</i>	Phone card Telephones

SURV AD 2.13-6 RESCUE AND FIRE FIGHTING SERVICES

1	<i>AD category for fire fighting</i>	☛CAT 5. A Rosembauer Panter model vehicle, 4 x 4, 6000 L of water, 750 L of level C foam and 250 kg of purple K PK92 chemical powder
2	<i>Rescue equipment</i>	☛Approach tools and equipment
3	<i>Capability for removal of disabled aircraft</i>	☛To be coordinated with the procedures of the aerodrome operator Puerta del Sur S.A.
4	<i>Remarks</i>	In case of major accident, FAU aircraft support immediate response, FAU rescue personnel, firefighters and doctors specializing in severe polytrauma.

SURV AD 2.13-7 SEASONAL AVAILABILITY - CLEARING

1	<i>Types of clearing equipment</i>	Nil
---	------------------------------------	-----

SURV AD 2.13-8 APRONS, TAXIWAYS AND CHECK LOCATIONS/POSITIONS DATA

1	<i>Apron surface and strength</i>	Surface: asphaltic concrete Strength: PCR 420/F/C/X/T
2	<i>Taxiway width, surface and strength</i>	Width: 23 M Surface: asphaltic concrete Strength: PCR 420/F/C/X/T
3	<i>Altimeter checkpoint location and elevation</i>	Apron centre (305810S/0552824W) 203 M (666 FT)
4	<i>VOR/INS checkpoints</i>	Nil
5	<i>Remarks</i>	Nil

SURV AD 2.13-9 SURFACE MOVEMENT GUIDANCE AND CONTROL SYSTEM AND MARKINGS

1	<i>Use of aircraft stand ID signs, TWY guide lines and visual docking/parking guidance system of aircraft stands</i>	Identification signs for parking spaces. Taxiway centre line markings
2	<i>RWY and TWY markings and LGT</i>	RWY: Markings: THR; RWY designation, centre line and aiming point. LGT: RWY THR identification; THR, RWY edge, RWY end lights TWY A: Markings: RWY holding position and centre line. LGT: TWY edge lights
3	<i>Stop bars</i>	Nil
4	<i>Remarks</i>	Aerodrome marshal service by the AD Operator

SURV AD 2.13-10 AERODROME OBSTACLES

<i>In Area 2</i>					
<i>OBST ID/ Designation</i>	<i>OBST type</i>	<i>OBST position</i>	<i>ELEV/HGT</i>	<i>Markings/ Type, colour</i>	<i>Remarks</i>
a	b	c	d	e	f
See AD Obstacle Chart – Type A					

<i>In Area 3</i>					
<i>OBST ID/ Designation</i>	<i>OBST type</i>	<i>OBST position</i>	<i>ELEV/HGT</i>	<i>Markings/ Type, colour</i>	<i>Remarks</i>
a	b	c	d	e	f
See AD Obstacle Chart – Type A					

SURV AD 2.13-11 METEOROLOGICAL INFORMATION PROVIDED

1	<i>Associated MET Office</i>	SURV
2	<i>Hours of service MET Office outside hours</i>	H24 -
3	<i>Office responsible for TAF preparation Periods of validity</i>	OMA SUMU ☛H24
4	<i>Trend forecast Interval of issuance</i>	Nil
5	<i>Briefing/consultation provided</i>	O/R
6	<i>Flight documentation Language(s) used</i>	O/R -
7	<i>Charts and other information available for briefing or consultation</i>	O/R
8	<i>Supplementary equipment available for providing information</i>	Nil
9	<i>ATS units provided with information</i>	RIVERA TWR, OPS
10	<i>Additional information (limitation of service, etc.)</i>	OMA SUMU

SURV AD 2.13-12 RUNWAY PHYSICAL CHARACTERISTICS

Designations RWY NR	TRUE BRG	Dimensions of RWY (M)	Strength (PCR) and surface of RWY and SWY	THR coordinates.		THR elevation and highest elevation of TDZ of precision APP RWY
				RWY end coordinates. THR geoid undulation		
1	2	3	4	5		6
05	041.92°	1 680 x 45	420/F/C/X/T Asphaltic concrete	305850.68S 0552857.19W 305850.68S 0552857.19W GUND 14.0 M		THR 190 M/623 FT
23	221.91°	1 830 x 45	420/F/C/X/T Asphaltic concrete	305810.11 0552814.93 W 305806.48S 0552811.15W GUND 14.0 M		THR 203 M/666 FT 205 M/673 FT
Slope of RWY-SWY	SWY dimensions (M)	CWY dimensions (M)	Strip dimensions (M)	OFZ	RESA (M)	Remarks
7	8	9	10	11	12	13
+0.73%/+0.94%/+0.8% (580 M) (850 M) (400 M)	Nil	Nil	1 890 x 280	Nil	90 x 90	Take-off LTD to CAT B ACFT
-0.8%/ -0.94%/ -0.73% (400 M) (850 M) (580 M)	Nil	Nil	1 890 x 280	Nil	90 x 70	See RESA in AD/Hlp Chart

SURV AD 2.13-13 DECLARED DISTANCES

RWY Designator	TORA (M)	TODA (M)	ASDA (M)	LDA (M)	Remarks
1	2	3	4	5	6
05	1 680	1 680	1 830	1 680	Nil
23	1 830	1 830	1 830	1 680	Nil

SURV AD 2.13-14 APPROACH AND RUNWAY LIGHTING

<i>RWY Designator</i>	<i>APCH LGT type LEN INTST</i>	<i>THR LGT colour WBAR</i>	<i>VASIS (MEHT) PAPI</i>	<i>TDZ, LGT LEN</i>	<i>RWY Centre Line LGT Length, spacing, colour, INTST</i>	<i>RWY edge LGT LEN, spacing colour INTST</i>	<i>RWY End LGT colour WBAR</i>	<i>SWY LGT LEN (M) colour</i>	<i>Remarks</i>
1	2	3	4	5	6	7	8	9	10
05	☛SALS ☛420 M	Green ☛	☛PAPI	Nil	Nil	☛1680 M, 60 M White	☛Red White Amber	Nil	☛ PAPI angle 3.0°
23	Nil	Green ☛	☛PAPI	Nil	Nil	☛1680 M, 60 M White	☛Red White Amber	Nil	☛ PAPI angle 3.5°



SURV AD 2.13-15 OTHER LIGHTING, SECONDARY POWER SUPPLY

1	<i>ABN/IBN location, characteristics and hours of operation</i>	☛ABN: Building TWR, medium intensity beacon/ IBN: Nil
2	<i>LDI location and LGT Anemometer location and LGT</i>	☛WDI: 150 M NE from THR 05, lighted Anemometer: 100 M from the RWY axis
3	<i>TWY edge and centre line lighting</i>	Edge: blue lights Centre: Nil
4	<i>Secondary power supply/switch-over time</i>	☛Diesel generator of 100 KVA / less than 15 seconds.
5	<i>Remarks</i>	Nil

SURV AD 2.13-16 HELICOPTER LANDING AREA

1	<i>Coordinates TLOF or THR of FATO</i>	Nil
2	<i>TLOF and/or FATO elevation M/FT</i>	Nil
3	<i>TLOF and FATO area dimensions, surface, strength, marking</i>	Nil
4	<i>True and MAG BRG FATO</i>	Nil
5	<i>Declared distance available</i>	Nil
6	<i>APP and FATO lighting</i>	Nil
7	<i>Remarks</i>	Nil

SURV AD 2.13-17 ATS AIRSPACE

1	<i>Designation and lateral limits</i>	RIVERA CTR  Arc, radius 15 NM (27.8 KM) centred at 305810S/0552824W. RIVERA ATZ  Arc, radius 4 NM centred at 305810S/0552824W.
2	<i>Vertical limits</i>	CTR: GND up to FL 055 ATZ: GND up to 450 M
3	<i>Airspace classification</i>	From MON to SUN from 10:00 to 22:00 UTC: "C"; others: "G".
4	<i>ATS unit call sign Language(s)</i>	Rivera Tower Spanish, English (O/R)
5	<i>Transition altitude</i>	900 M
6	<i>Remarks</i>	Nil

SURV AD 2.13-18 ATS COMMUNICATION FACILITIES

<i>Service designation</i>	<i>Call sign</i>	<i>Frequency</i>	<i>Hours of operation</i>	<i>Remarks</i>
1	2	3	4	5
TWR	Rivera Tower	118.0 MHZ 122.1 MHZ†	As AD	† Secondary FREQ

SURV AD 2.13-19 RADIO NAVIGATION AND LANDING AIDS

<i>Type of aid, MAG VAR, Type of supported OP (for VOR/ILS/MLS, give declination)</i>	<i>ID</i>	<i>Frequency</i>	<i>Hours of operation</i>	<i>Position of transmitting antenna coordinates</i>	<i>Elevation of DME transmitting antenna</i>	<i>Remarks</i>
1	2	3	4	5	6	7

SURV AD 2.13-20 LOCAL TRAFFIC REGULATIONS

• Nil

SURV AD 2.13-21 NOISE ABATEMENT PROCEDURES

• Nil

SURV AD 2.13-22 FLIGHT PROCEDURES

Minimum IFR take-off

The minimums applicable for take-off in terms of ceiling and visibility, for aircraft with two or more engines, shall be the minimums established for the instrument approach procedure published for the runway in use.
The minimums applicable for take-off in terms of ceiling, for single-engine aircraft, shall be equal to or higher than that established in the Instrument Approach Charts, and the minimum visibility required shall be 1600 M.

Minimum IFR landing

The minimums applicable for landing in terms of ceiling and visibility, shall be the minimum for the instrumental approach procedure published for the runway in use.

☛ Use limitations

☛ When ATC services at the aerodrome are not available, flights with international destination shall obtain FPL approval and Transponder Code, prior to departure, from Montevideo ACC.

SURV AD 2.13-23 ADDITIONAL INFORMATION

•IBIS Bird Collisions Notification

•Whenever an aircraft experiences a bird strike or ingestion, the incident must be reported to both the Civil Aviation Authority (CAA) and the Aerodrome Operator.

•This must be done through the DINACIA website, where the IBIS Registration form is available:
<https://www.dinacia.gub.uy/servicio/reporte-ibis>

•If the aircraft sustains damage that causes a significant delay or grounding, notification must be sent to aicinspectorestac@dinacia.gub.uy (Commercial Air Transport Office) or by calling 2604 0290 (24-hour service).

SURV AD 2.13-24 CHARTS RELATED TO AN AERODROME

Aerodrome/Heliport Chart – ICAO	AD 2.13-15
Aerodrome Obstacle Chart – ICAO Type A – RWY 05/23	AD 2.13-17
☛ Instrument Approach Chart - ICAO RNP RWY 05	AD 2.13-19
☛ Instrument Approach Chart - ICAO RNP RWY 23	AD 2.13-21
☛ Visual Approach Chart – ICAO	AD 2.13-23

**INTENTIONALLY
LEFT BLANK**

AERODROME/HELIPORT
CHART - ICAO

30°58'10"S
055°28'24"W
ELEV 203
(666)

TWR 118.0 - 122.1
APRON 118.0 - 122.1

RIVERA/Intl
Presidente General
Oscar D. Gestido

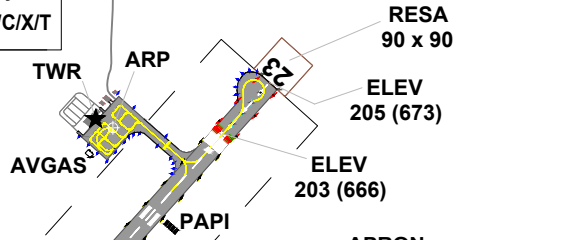
RWY	DIRECTION	THR	GUND	BEARING STRENGTH
05	056°	30°58'50.68"S 55°28'57.19"W	14.0 M	Runway, Apron and Taxiway PCR 420/F/C/X/T
23	236°	30°58'10.11"S 55°28'14.93"W	14.0 M	

ELEVATIONS IN METRES (AND FEET)
DIMENSIONS IN METRES
BEARINGS ARE MAGNETIC

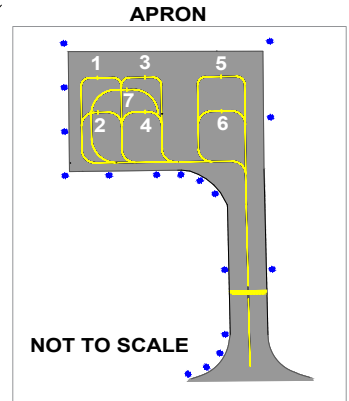
TAXIWAYS 23 WIDE



NOTE:
RWY 05: take-off LTD to
CAT B ACFT



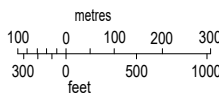
STRIP 1890 x 280
1830 x 45 ASPHALTIC CONCRETE



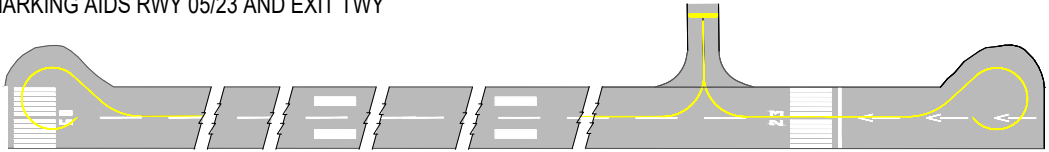
INS COORDINATES FOR
AIRCRAFT STANDS

1	30°58'10.26"S	055°28'25.67"W
2	30°58'10.68"S	055°28'25.04"W
3	30°58'09.55"S	055°28'24.93"W
4	30°58'10.00"S	055°28'24.34"W
5	30°58'08.45"S	055°28'23.79"W
6	30°58'08.88"S	055°28'23.17"W
7	30°58'10.06"S	055°28'25.09"W

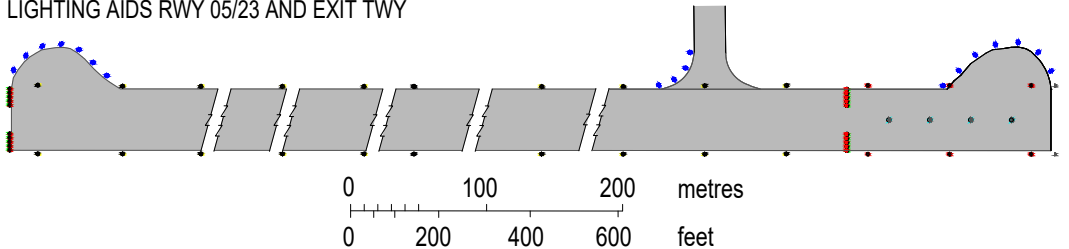
Change:
STRENGTH, VAR, NOTE



MARKING AIDS RWY 05/23 AND EXIT TWY



LIGHTING AIDS RWY 05/23 AND EXIT TWY



**INTENTIONALLY
LEFT BLANK**

AERODROME OBSTACLE CHART - ICAO

TYPE A (OPERATING LIMITATIONS)

DIMENSIONS AND ELEVATIONS IN METRES

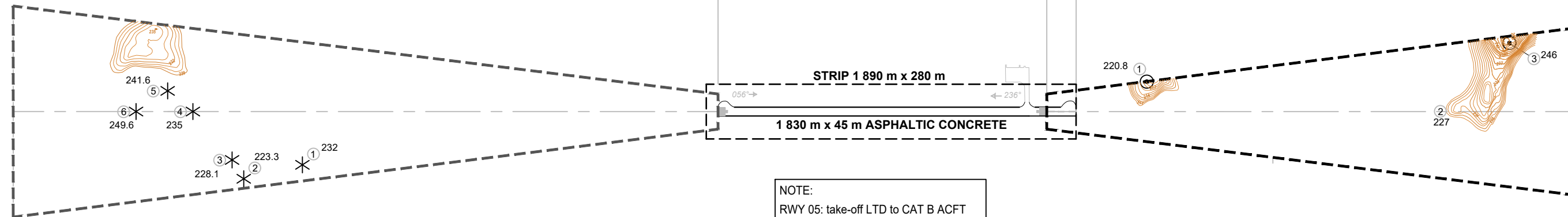
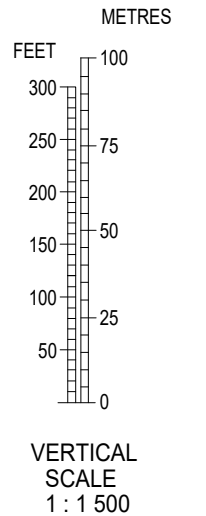
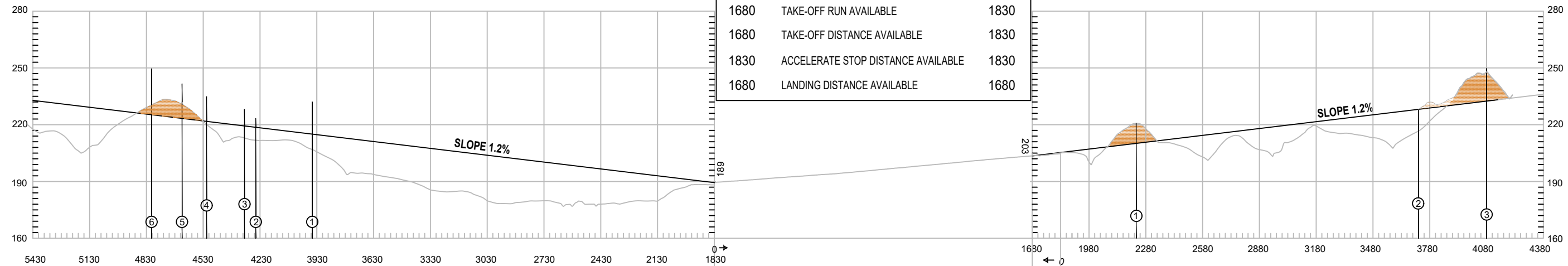
RIVERA/Intl Presidente General Oscar D. Gestido

MAGNETIC VARIATION 14° W JAN 2025

RWY 05 / 23

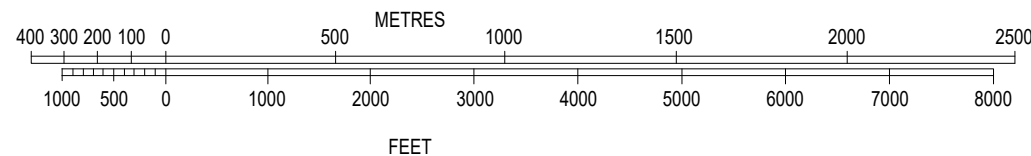
DECLARED DISTANCES

RWY 05		RWY 23
1680	TAKE-OFF RUN AVAILABLE	1830
1680	TAKE-OFF DISTANCE AVAILABLE	1830
1830	ACCELERATE STOP DISTANCE AVAILABLE	1830
1680	LANDING DISTANCE AVAILABLE	1680



NOTE:
RWY 05: take-off LTD to CAT B ACFT

HORIZONTAL SCALE 1:15 000



ORDER OF ACCURACY
HORIZONTAL 00 M
VERTICAL 00 M

LEGEND	
IDENTIFICATION NUMBER	①
TREE OR SHRUB	*
HIGHWAY	====
POLE, TOWER, SPIRE, ANTENNA, ETC.	⊙
BUILDING OR LARGE STRUCTURE	■
RAILROAD	—+—+—+—
TERRAIN CONTOUR	~ ~ ~
TERRAIN PENETRATING OBSTACLE PLANE	▲

Change:
VAR and NOTE

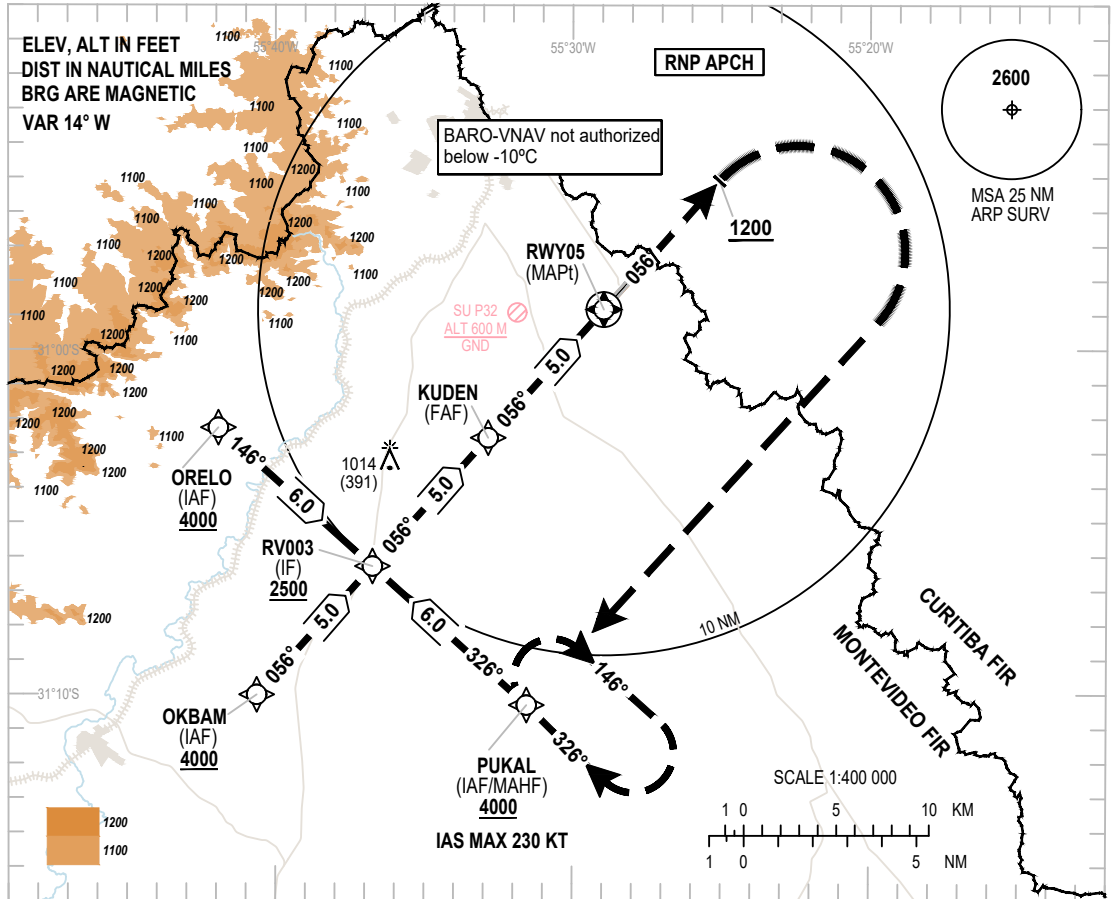
**INTENTIONALLY
LEFT BLANK**

INSTRUMENT
APPROACH
CHART - ICAO

AERODROME ELEV **666 FT**
HEIGHTS RELATED TO
THR RWY 05 - ELEV 623 FT

TWR 118.0 - 122.1

RIVERA/Intl
Presidente General
Oscar D. Gestido
RNP RWY 05

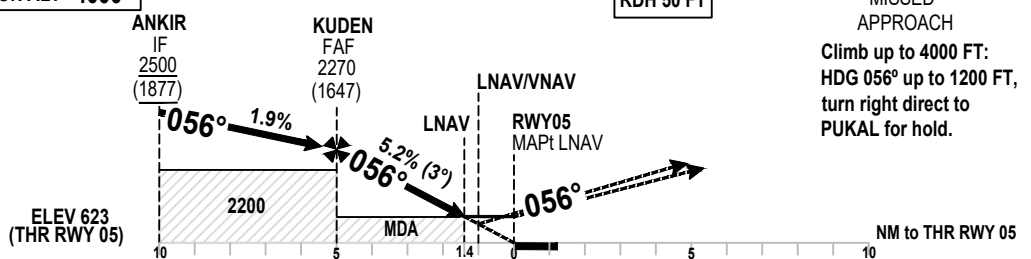


NM to next WPT	RWY05	5	4	3	2	1.4
ALTITUDE		2270	1947	1628	1310	1120
HEIGHT		1647	1324	1005	687	500

TRANSITION ALT **4000**

RDH 50 FT

MISSED
APPROACH
Climb up to 4000 FT:
HDG 056° up to 1200 FT,
turn right direct to
PUKAL for hold.



OCA / OCH	A	B	C
LNAV/VNAV		994(371)	
VIS		1700 M	
LNAV		1120(500)	
VIS		2300 M	

FAF to MAPt	KT	90	110	130
Vertical speed of descent 5.2%	Feet/Min	500	600	700

INSTRUMENT
APPROACH
CHART - ICAO

AERODROME ELEV **666 FT**
HEIGHTS RELATED TO
THR RWY 05 - ELEV 623 FT

TWR 118.0 - 122.1

RIVERA/Intl
Presidente General
Oscar D. Gestido
RNP RWY 05

TABULAR DESCRIPTION

RNP RWY 05											
Serial Number	Path Descriptor	Waypoint Identifier	Fly-Over	Course °M(°T)	Magnetic Variation	Distance (NM)	Turn Direction	Altitude (FT)	Speed Limit (Knots/h)	VPA/TCH	Navigation Specification
010	IF	OKBAM	-	-	-	-	-	+4000	-	-	RNP APCH
020	TF	ANKIR	-	056(042.0)	-	5.00	-	+2500	-	-	RNP APCH
010	IF	ORELO	-	-	-	-	-	+4000	-	-	RNP APCH
020	TF	ANKIR	-	146(132.0)	-	6.00	-	+2500	-	-	RNP APCH
010	IF	PUKAL	-	-	-	-	-	+4000	-	-	RNP APCH
020	TF	ANKIR	-	326(312.0)	-	6.00	-	+2500	-	-	RNP APCH
010	IF	ANKIR	-	-	-	-	-	+2500	-	-	RNP APCH
020	TF	KUDEN	-	056(042.0)	-	5.00	-	R2270	-	-	RNP APCH
030	TF	RWY05	Si	056(042.0)	-	5.00	-	@673	-	-3.00	RNP APCH
010	CA	-	-	056(042.0)	-	-	-	+1200	IAS 230	-	RNP APCH
020	DF	PUKAL	Si	-	-	-	R	+4000	-	-	RNP APCH
030	HM	PUKAL	Si	326(312.0)	-	-	R	+4000	-	-	RNP APCH

Cambio:
New chart

WAYPOINT LIST

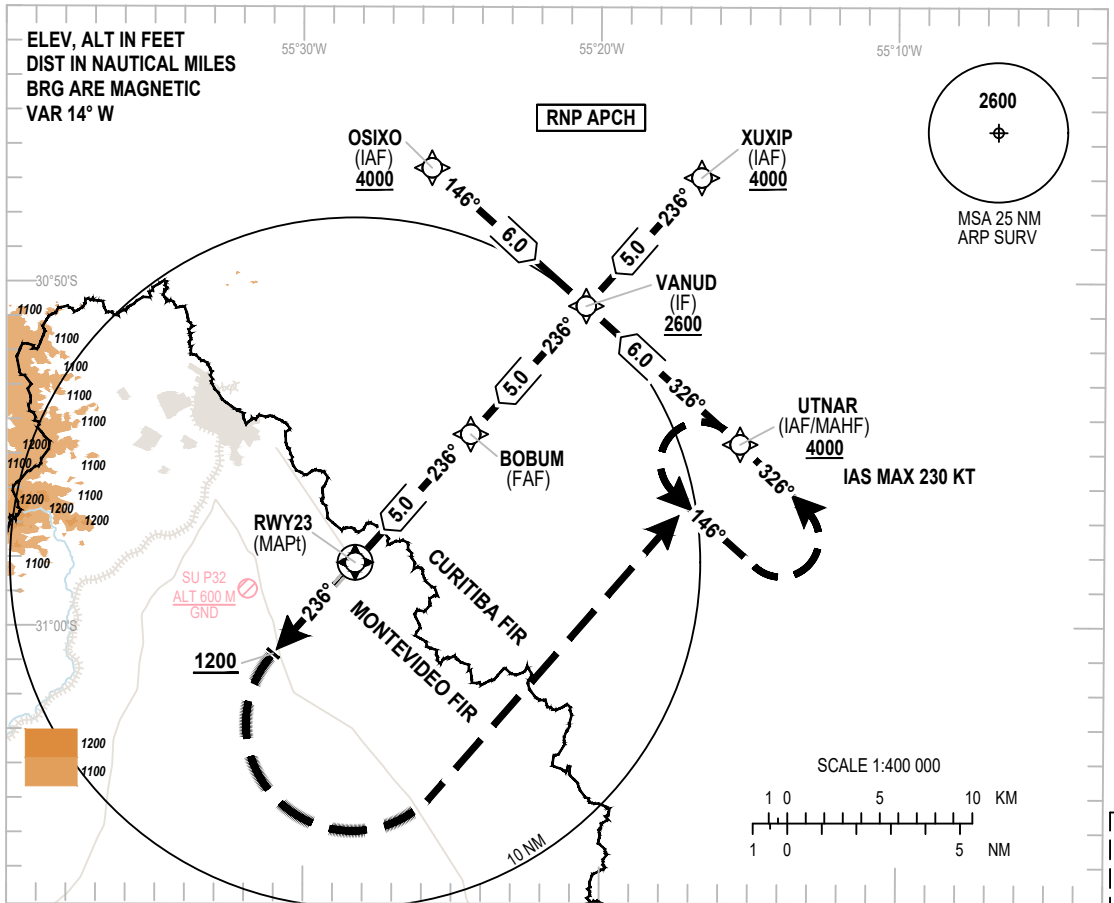
RNP RWY 05	
Waypoint Identifier	Coordinates
ANKIR	31°06'17.95"S 055°36'44.03"W
KUDEN	31°02'34.38"S 055°32'50.46"W
OKBAM	31°10'01.41"S 055°40'37.90"W
ORELO	31°02'16.57"S 055°41'55.58"W
PUKAL	31°10'19.54"S 055°31'32.47"W
RWY05	30°58'50.68"S 055°28'57.19"W

INSTRUMENT
APPROACH
CHART - ICAO

AERODROME ELEV **666 FT**
HEIGHTS RELATED TO
THR RWY 23 - ELEV 666 FT

TWR 118.0 - 122.1

RIVERA/Intl
Presidente General
Oscar D. Gestido
RNP RWY 23

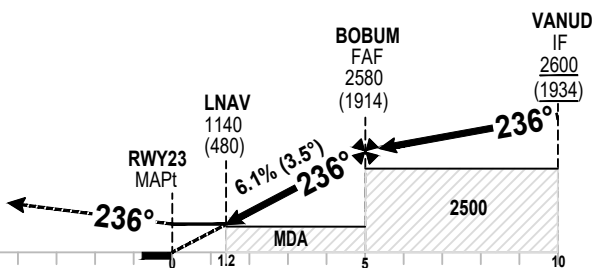


Cambio:
New chart

NM to next WPT	RWY23	5	4	3	2	1.2
ALTITUDE		2580	2202	1831	1459	1140
HEIGHT		1914	1536	1165	793	480

MISSED
APPROACH
Climb up to 4000 FT:
HDG 236° up to 1200 FT,
turn left direct to UTNAR
for hold.

TRANSITION ALT **4000**



OCA / OCH	A	B	C
LNVA		1140(480)	
VIS		2200 M	

KT	80	100	120	140	
FAF - RWY 23 (5 NM)	Min:Seg	3:45	3:00	2:30	2:09
Vertical speed of descent 6.1%	Feet/Min	500	620	740	870

INSTRUMENT
APPROACH
CHART - ICAO

AERODROME ELEV **666 FT**
HEIGHTS RELATED TO
THR RWY 23 - ELEV 666 FT

TWR 118.0 - 122.1

RIVERA/Intl
Presidente General
Oscar D. Gestido
RNP RWY 23

TABULAR DESCRIPTION

RNP RWY 23											
Serial Number	Path Descriptor	Waypoint Identifier	Fly-Over	Course °M(°T)	Magnetic Variation	Distance (NM)	Turn Direction	Altitude (FT)	Speed Limit (Knots/h)	VPA/TCH	Navigation Specification
010	IF	XUXIP	-	-	-	-	-	+4000	-	-	RNP APCH
020	TF	VANUD	-	236(221.8)	-	5.00	-	+2600	-	-	RNP APCH
010	IF	UTNAR	-	-	-	-	-	+4000	-	-	RNP APCH
020	TF	VANUD	-	326(311.8)	-	6.00	-	+2600	-	-	RNP APCH
010	IF	OSIXO	-	-	-	-	-	+4000	-	-	RNP APCH
020	TF	VANUD	-	146(131.8)	-	6.00	-	+2600	-	-	RNP APCH
010	IF	VANUD	-	-	-	-	-	+2600	-	-	RNP APCH
020	TF	BOBUM	-	236(221.8)	-	5.00	-	R2580	-	-	RNP APCH
030	TF	RWY23	Si	236(221.8)	-	5.00	-	@716	-	-3.50	RNP APCH
010	CA	-	-	236(221.8)	-	-	-	+1200	IAS 230	-	RNP APCH
020	DF	UTNAR	Si	-	-	-	L	+4000	-	-	RNP APCH
030	HM	UTNAR	Si	326(312.0)	-	-	L	+4000	-	-	RNP APCH

Cambio:
New chart

WAYPOINT LIST

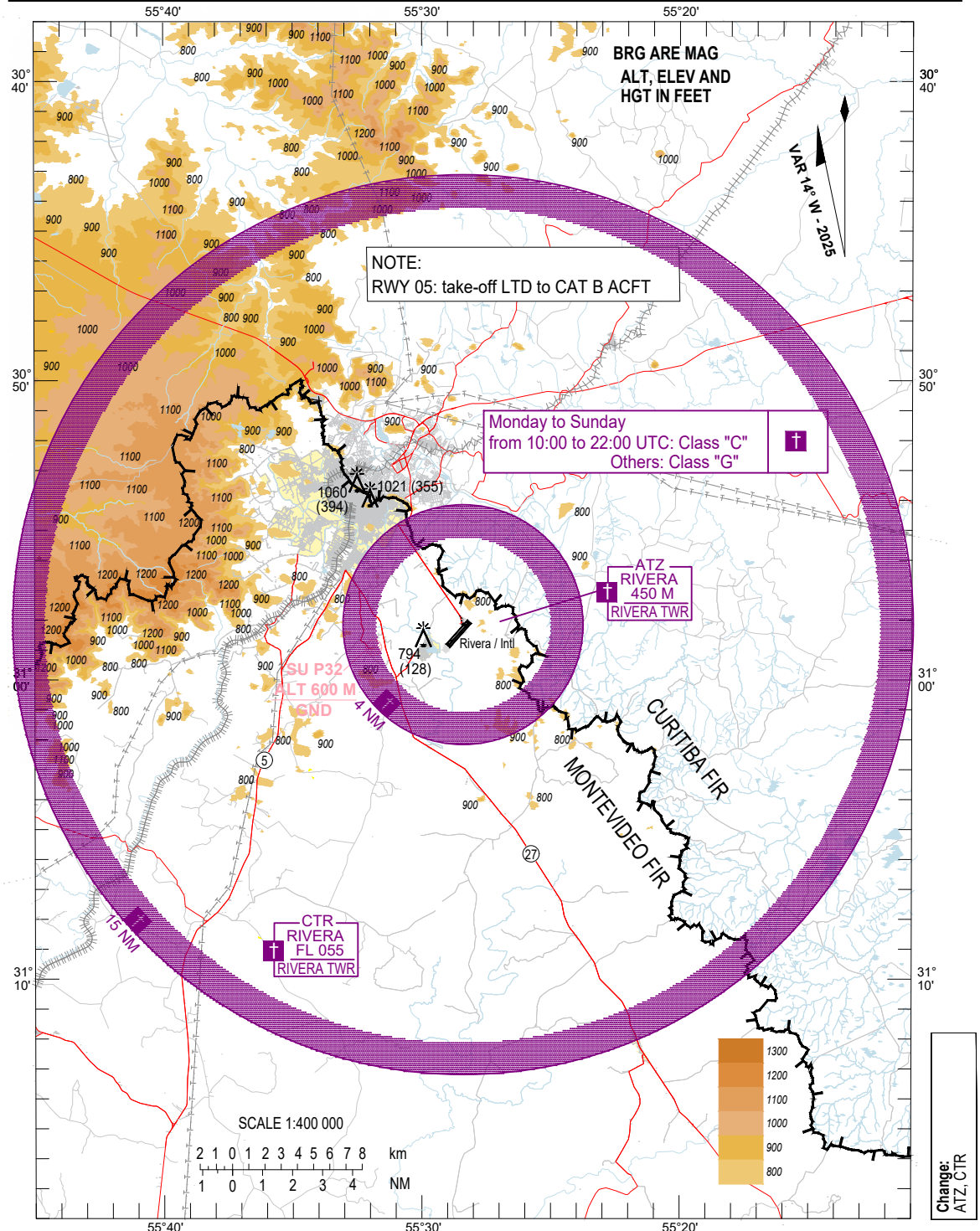
RNP RWY 23	
Waypoint Identifier	Coordinates
BOBUM	30°54'26.27"S 055°24'22.02"W
OSIXO	30°46'42.06"S 055°25'41.31"W
RWY23	30°58'10.11"S 055°28'14.93"W
UTNAR	30°54'42.95"S 055°15'17.69"W
VANUD	30°50'42.32"S 055°20'29.41"W
XUXIP	30°46'58.24"S 055°16'37.10"W

VISUAL
APPROACH
CHART - ICAO

AERODROME ELEV **666 FT**
HEIGHTS RELATED TO
AD ELEV

ACC 128.5 - 126.3
TWR 118.0 - 122.1

RIVERA/Intl
Presidente General
Oscar D. Gestido



**INTENTIONALLY
LEFT BLANK**