

AD 2. AERODROMES**SUSO AD 2.14-1 AERODROME LOCATION INDICATOR AND NAME**

SUSO - SALTO / Intl Nueva Hespérides

SUSO 2.14-2 AERODROME GEOGRAPHICAL AND ADMINISTRATIVE DATA

1	<i>ARP coordinates and site at AD</i>	312605S 0575903W Location: 440 M SW from THR 23
2	<i>Direction and distance from (city)</i>	7 KM SW from the city
3	<i>Elevation/Reference temperature</i>	43 M (141 FT) / 32°C
4	<i>Geoid undulation at AD ELEV PSN</i>	16 M
5	<i>MAG VAR/Annual change</i>	☛ 12° W (JAN 2025) / 0.16° increasing
6	<i>AD operator, address, telephone, telefax, e-mail address, AFS address, website address</i>	Puerta del Sur S.A. Aeropuerto Internacional de Salto "Nueva Hespérides" - Salto Tel: 4732 7119 - Mobile (+598) 92344298 (Puerta del Sur) Telefax: 4732 7119 Flight Plan: 2064 0329 ext 2356 AD Operator: 2604 0329 ext 2350 e-mail: suso@dinacia.gub.uy AFS: SUSOYTYX
7	<i>Types of traffic permitted (IFR/VFR)</i>	IFR/VFR
8	<i>Remarks</i>	Nil

SUSO AD 2.14-3 HORAS DE FUNCIONAMIENTO

1	<i>AD Operator</i>	H24
2	<i>Customs and immigration</i>	O/R
3	<i>Health and sanitation</i>	In the city (air ambulance in the Centro de Aviación Salto and two private planes to make putting ambulance stretchers and equipment)
4	<i>AIS Briefing Office</i>	Nil
5	<i>ATS Reporting Office (ARO)</i>	MON – SUN from 10:00 to 22:00 UTC
6	<i>MET Briefing Office</i>	MON – SUN from 10:00 to 22:00 UTC (Tel.: 4733 4888; 4732 2310)
7	<i>ATS</i>	MON – SUN from 10:00 to 22:00 UTC
8	<i>Fuelling</i>	As AD Operator
9	<i>Handling</i>	As AD Operator
10	<i>Security</i>	As AD Operator

11	<i>De-icing</i>	Nil
12	<i>Remarks</i>	Nil

SUSO AD 2.14-4 HANDLING SERVICES AND FACILITIES

1	<i>Cargo-handling facilities</i>	Nil
2	<i>Fuel/oil types</i>	☛AVGAS 100, JET A1 / Oil: Philips 66-100 ad
3	<i>Fuelling facilities/capacity</i>	AVGAS 100: 1 Tank of 25.000 L JET A1: 1 Tank of 30.000 L
4	<i>De-icing facilities</i>	Nil
5	<i>Hangar space for visiting aircraft</i>	Nil
6	<i>Repair facilities for visiting aircraft</i>	Nil
7	<i>Remarks</i>	GPU equipment 115 V; GPU equipment 28 V ☛Ultra starter Kit Model UST4030 equipment

SUSO AD 2.14-5 PASSENGER FACILITIES

1	<i>Hotels</i>	In the city
2	<i>Restaurants</i>	In the city
3	<i>Transportation</i>	Taxis and limos in the city
4	<i>Medical facilities</i>	In the city (air ambulance in the Centro de Aviación Salto)
5	<i>Bank and Post Office</i>	Nil
6	<i>Tourist Office</i>	Nil
7	<i>Remarks</i>	Nil

SUSO AD 2.14-6 RESCUE AND FIRE FIGHTING SERVICES

1	<i>AD category for fire fighting</i>	CAT 5. A Rosebauer Panter model vehicle, 4 x 4, 6000 L of water, 750 L of level C foam and 250 kg of purple K PK92 chemical powder
2	<i>Rescue equipment</i>	Approach tools and equipment
3	<i>Capability for removal of disabled aircraft</i>	To be coordinated with the procedures of the aerodrome operator Puerta del Sur S.A.
4	<i>Remarks</i>	In case of major accident, FAU aircraft support immediate response, FAU rescue personnel, firefighters and doctors specializing in severe polytrauma.

SUSO AD 2.14-7 SEASONAL AVAILABILITY - CLEARING

1	<i>Types of clearing equipment</i>	Nil
---	------------------------------------	-----

SUSO AD 2.14-8 APRONS, TAXIWAYS AND CHECK LOCATIONS/POSITIONS DATA

1	<i>Apron surface and strength</i>	Surface: asphaltic concrete ☛ Strength: Commercial Apron: PCR 410/R/A/W/T ☛ General Apron: 5700 KG
2	<i>Taxiway width, surface and strength</i>	Width: 19 M Surface: asphaltic concrete ☛ Strength: TWY "A": PCR 410/R/A/W/T ☛ TWY "B": 5700 KG
3	<i>Altimeter checkpoint location and elevation</i>	Terminal building apron (312614S/0575851W) 37 M
4	<i>VOR checkpoints</i>	Nil
5	<i>VOR/INS checkpoints</i>	Nil
6	<i>Remarks</i>	Nil

SUSO AD 2.14-9 SURFACE MOVEMENT GUIDANCE AND CONTROL SYSTEM AND MARKINGS

1	<i>Use of aircraft stand ID signs, TWY guide lines and visual docking/parking guidance system of aircraft stands</i>	Parking stand Id signs Taxiway centreline signs
2	<i>RWY and TWY markings and LGT</i>	RWY: Designation, centre line, THR and aiming point TWY: centre line
3	<i>Stop bars</i>	On TWY with RWY
4	<i>Remarks</i>	Nil

SUSO AD 2.14-10 AERODROME OBSTACLES

<i>In Area 2</i>					
<i>OBST ID/ Designation</i>	<i>OBST type</i>	<i>OBST position</i>	<i>ELEV/HGT</i>	<i>Markings/ Type, colour</i>	<i>Remarks</i>
<i>a</i>	<i>b</i>	<i>c</i>	<i>d</i>	<i>e</i>	<i>f</i>
No data					

<i>In Area 3</i>					
<i>OBST ID/ Designation</i>	<i>OBST type</i>	<i>OBST position</i>	<i>ELEV/HGT</i>	<i>Markings/ Type, colour</i>	<i>Remarks</i>
a	b	c	d	e	f
No data					

SUSO AD 2.14-11 METEOROLOGICAL INFORMATION PROVIDED

1	<i>Associated MET Office</i>	SUSO
2	<i>Hours of service MET Office outside hours</i>	MON – SUN from 10:00 to 22:00 UTC and O/R
3	<i>Office responsible for TAF preparation Periods of validity</i>	OMA SUMU ☛ H24
4	<i>Trend forecast Interval of issuance</i>	Nil
5	<i>Briefing/consultation provided</i>	O/R
6	<i>Flight documentation Language(s) used</i>	O/R -
7	<i>Charts and other information available for briefing or consultation</i>	O/R
8	<i>Supplementary equipment available for providing information</i>	O/R
9	<i>ATS units provided with information</i>	SALTO TWR
10	<i>Additional information (limitation of service, etc.)</i>	OMA SUMU

SUSO AD 2.14-12 RUNWAY PHYSICAL CHARACTERISTICS

Designations RWY NR	TRUE BRG	Dimensions of RWY (M)	Strength ☛(PCR) and surface of RWY and SWY	THR coordinates.		THR elevation and highest elevation of TDZ of precision APP RWY
				RWY end coordinates. THR geoid undulation		
1	2	3	4	5		6
05	038.88°	1 588 x 45	☛410/R/A/W/T Asphaltic concrete	312638.58S 0575925.92W 312638.58S 0575925.92W GUND 16.6 M		THR 43 M/141 FT
23	218.88°	1 588 x 45	☛410/R/A/W/T Asphaltic concrete	312558.47S 0575848.20W 312558.47S 0575848.20W GUND 16.5 M		THR 39 M/128 FT
13	116.23°	700 x 50	Grass	312551.50S 0575919.24W 312551.50S 0575919.24W GUND 16.5 M		THR 35 M/115 FT
31	296.22°	700 x 50	Grass	312601.54S 0575855.45W 312601.54S 0575855.45W GUND 16.5 M		THR 40 M/131 FT
Slope of RWY-SWY	SWY dimensions (M)	CWY dimensions (M)	Strip dimensions (M)	OFZ	RESA (M)	Remarks
7	8	9	10	11	12	13
0.5%/-0.9%/1%/-0.1% (244 M) (438 M) (761 M) (145 M)	Nil	Nil	1 708 x 280	Nil	90 x 90	Nil
0.1%/-1%/0.9%/-0.5% (145 M) (761 M) (438 M) (244 M)	Nil	Nil	1 708 x 280	Nil	90 x 90	Nil

SUSO AD 2.14-13 DECLARED DISTANCES

<i>RWY Designator</i>	<i>TORA (M)</i>	<i>TODA (M)</i>	<i>ASDA (M)</i>	<i>LDA (M)</i>	<i>Remarks</i>
1	2	3	4	5	6
05	1 588	1 588	1 588	1 588	Nil
23	1 588	1 588	1 588	1 588	Nil
13	☛700	☛700	☛700	☛700	Nil
31	☛700	☛700	☛700	☛700	Nil

SUSO AD 2.14-14 APPROACH AND RUNWAY LIGHTING

<i>RWY Designator</i>	<i>APCH LGT type LEN INTST</i>	<i>THR LGT colour WBAR</i>	<i>VASIS (MEHT) PAPI</i>	<i>TDZ, LGT LEN</i>	<i>RWY Centre Line LGT Length, spacing, colour, INTST</i>	<i>RWY edge LGT LEN, spacing colour INTST</i>	<i>RWY End LGT colour WBAR</i>	<i>SWY LGT LEN (M) colour</i>	<i>Remarks</i>
1	2	3	4	5	6	7	8	9	10
05	SALS 420 M LIM	Green	PAPI	Nil	Nil	1588 M, 60 M White Amber	Red	Nil	Nil
23	SALS 210 M LIM	Green	PAPI	Nil	Nil	1588 M, 60 M White Amber	Red	Nil	Nil
13	Nil	Nil	Nil	Nil	Nil	Nil	Nil	Nil	Nil
31	Nil	Nil	Nil	Nil	Nil	Nil	Nil	Nil	Nil

SUSO AD 2.14-15 OTHER LIGHTING, SECONDARY POWER SUPPLY

1	<i>ABN/IBN location, characteristics and hours of operation</i>	ABN: In TWR / IBN: Nil
2	<i>LDI location and LGT Anemometer location and LGT</i>	WDI: 330 M SW from THR 23, lighted Anemometer: 50 M W from TWR
3	<i>TWY edge and centre line lighting</i>	Edge: blue lights Centre: Nil
4	<i>Secondary power supply/switch-over time</i>	Secondary power supply: 110 KW (automatic manual) for the entire aerodrome.
5	<i>Remarks</i>	Nil

SUSO AD 2.14-16 HELICOPTER LANDING AREA

1	<i>Coordinates TLOF or THR of FATO Geoid undulation</i>	Nil
2	<i>TLOF and/or FATO elevation M/FT</i>	Nil
3	<i>TLOF and FATO area dimensions, surface, strength, marking</i>	Nil
4	<i>True BRG FATO</i>	Nil
5	<i>Declared distance available</i>	Nil
6	<i>APP and FATO lighting</i>	Nil
7	<i>Remarks</i>	Nil

SUSO AD 2.14-17 ATS AIRSPACE

1	<i>Designation and lateral limits</i>	SALTO CTR Arc, radius 10 NM (18 KM) centred at 312605S 0575903W up to the FIR limit SALTO ATZ ● Arc, radius 4 NM (7.4 KM) centred at 312605S 0575903W up to the FIR limit
2	<i>Vertical limits</i>	CTR: GND up to FL 055 ATZ: GND up to 450 M
3	<i>Airspace classification</i>	From MON to SUN from 10:00 to 22:00 UTC: "C"; others: "G"
4	<i>ATS unit call sign Language(s)</i>	Salto Tower Spanish, English (O/R)
5	<i>Transition altitude</i>	900 M
6	<i>Remarks</i>	Nil

SUSO AD 2.14-18 ATS COMMUNICATION FACILITIES

<i>Service designation</i>	<i>Call sign</i>	<i>Frequency</i>	<i>Hours of operation</i>	<i>Remarks</i>
1	2	3	4	5
TWR	Salto Tower	118.8 MHZ 122.1 MHZ*	As AD	* Secondary FREQ

SUSO AD 2.14-19 RADIO NAVIGATION AND LANDING AIDS

<i>Type of aid, MAG VAR, Type of supported OP (for VOR/ILS/MLS, give declination)</i>	<i>ID</i>	<i>Frequency</i>	<i>Hours of operation</i>	<i>Position of transmitting antenna coordinates</i>	<i>Elevation of DME transmitting antenna</i>	<i>Remarks</i>
1	2	3	4	5	6	7
Nil						

SUSO AD 2.14-20 LOCAL TRAFFIC REGULATIONS

☛ Nil

SUSO AD 2.14-21 NOISE ABATEMENT PROCEDURES

☛ Nil

SUSO AD 2.14-22 FLIGHT PROCEDURES

☛ Use limitations

☛ When ATC services at the aerodrome are not available, flights with international destination shall obtain FPL approval and Transponder Code, prior to departure, from Montevideo ACC.

SUSO AD 2.14-23 ADDITIONAL INFORMATION

✎ IBIS Bird Collisions Notification

✎ Whenever an aircraft experiences a bird strike or ingestion, the incident must be reported to both the Civil Aviation Authority (CAA) and the Aerodrome Operator.

✎ This must be done through the DINACIA website, where the IBIS Registration form is available: <https://www.dinacia.gub.uy/servicio/reporte-ibis>

✎ If the aircraft sustains damage that causes a significant delay or grounding, notification must be sent to aicinspectorestac@dinacia.gub.uy (Commercial Air Transport Office) or by calling 2604 0290 (24-hour service).

SUSO AD 2.14-24 CHARTS RELATED TO AN AERODROME

Aerodrome/Heliport Chart – ICAO..... ➡ AD 2.14-15
➡ Aerodrome Obstacle Chart – ICAO Type A – RWY 05/23 AD 2.14-17
Instrument Approach Chart - ICAO RNAV (GNSS) RWY 05 ➡ AD 2.14-19

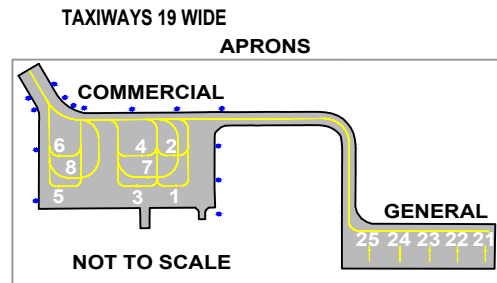
**INTENTIONALLY
LEFT BLANK**

AERODROME/HELIPORT CHART - ICAO	31°26'05"S 057°59'03"W	ELEV 043 (141)	TWR 118.8 - 122.1 APRON 118.8 - 122.1	SALTO/Intl Nueva Hespérides
------------------------------------	---------------------------	-------------------	--	--------------------------------

RWY	DIRECTION	THR	GUND	BEARING STRENGTH
05	051°	31°26'38.58"S 57°59'25.92"W	16.6 M	Runway, Taxiway A and Commercial Apron: PCR 410/R/A/W/T Taxiway B and General Apron: 5700 KG
23	231°	31°25'58.47"S 57°58'48.20"W	16.5 M	
13	128°	31°25'51.50"S 57°59'19.24"W	16.5 M	No data
31	308°	31°26'01.54"S 57°58'55.45"W	16.5 M	

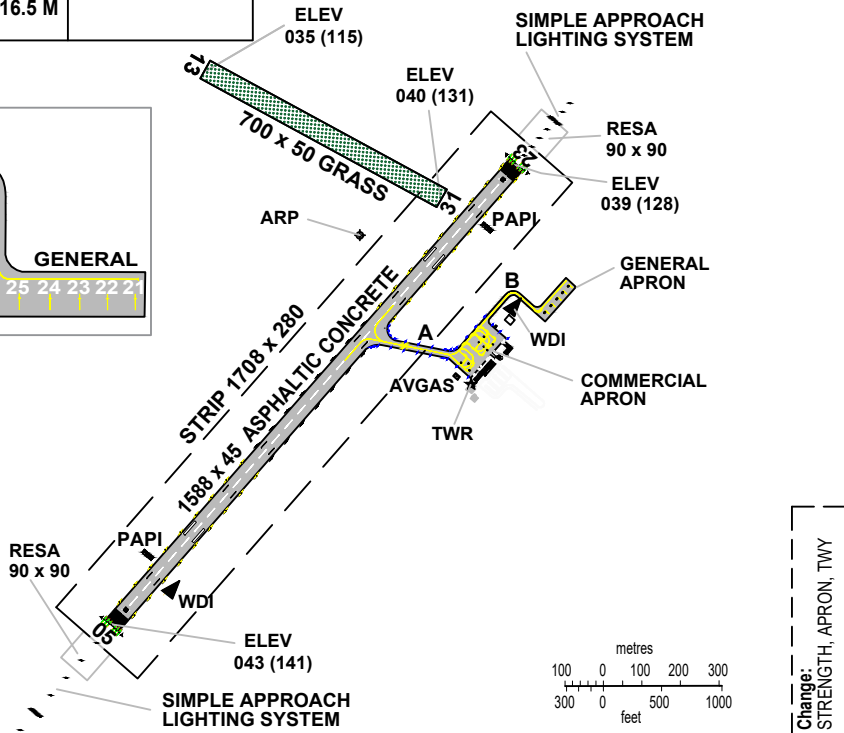
VAR 12° W - 2025
ANNUAL RATE
OF CHANGE 09 W

ELEVATIONS IN METRES (AND FEET)
DIMENSIONS IN METRES
BEARINGS ARE MAGNETIC

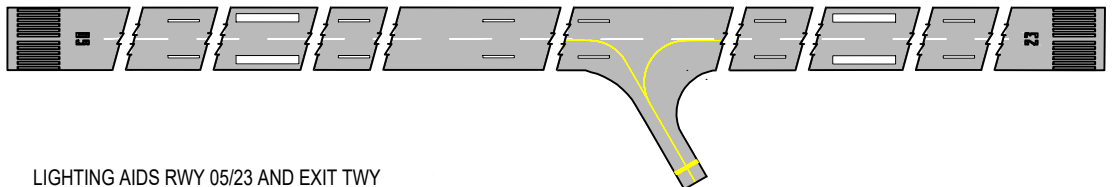


INS COORDINATES FOR
AIRCRAFT STANDS

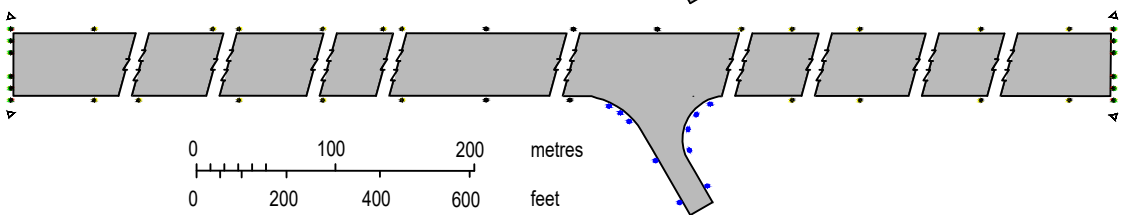
1	31°26'13.50"S	057°58'49.79"W
2	31°26'13.05"S	057°58'50.52"W
3	31°26'14.26"S	057°58'50.51"W
4	31°26'13.68"S	057°58'51.12"W
5	31°26'15.81"S	057°58'51.97"W
6	31°26'15.32"S	057°58'52.67"W
7	31°26'13.91"S	057°58'50.50"W
8	31°26'15.48"S	057°58'51.99"W
21	31°26'08.45"S	057°58'42.47"W
22	31°26'09.00"S	057°58'43.00"W
23	31°26'09.54"S	057°58'43.52"W
24	31°26'10.13"S	057°58'44.08"W
25	31°26'10.73"S	057°58'44.66"W



MARKING AIDS RWY 05/23 AND EXIT TWY



LIGHTING AIDS RWY 05/23 AND EXIT TWY



**INTENTIONALLY
LEFT BLANK**

AERODROME OBSTACLE CHART - ICAO

TYPE A (OPERATING LIMITATIONS)

DIMENSIONS AND ELEVATIONS IN METRES

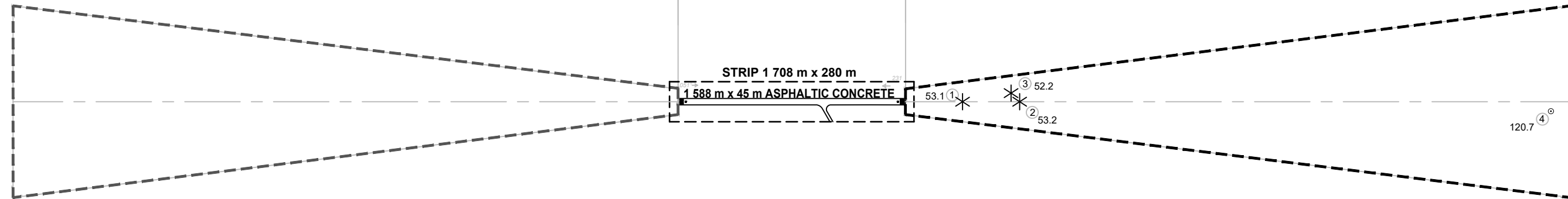
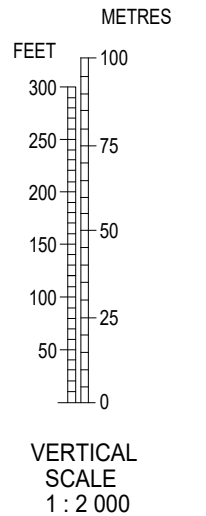
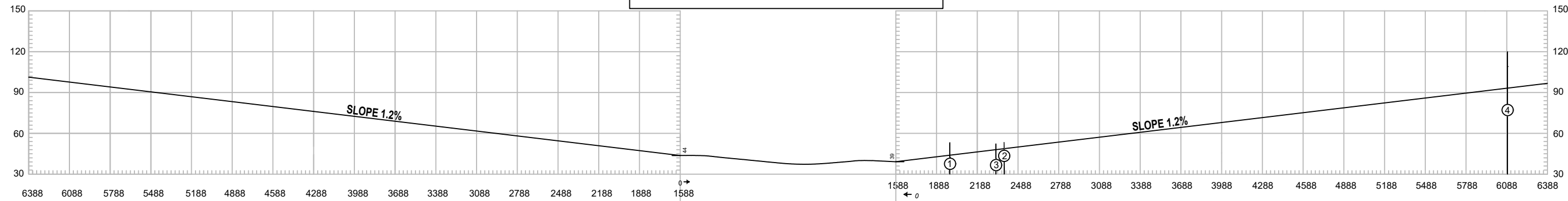
SALTO / Intl Nueva Hespérides

MAGNETIC VARIATION 12° W JAN 2025

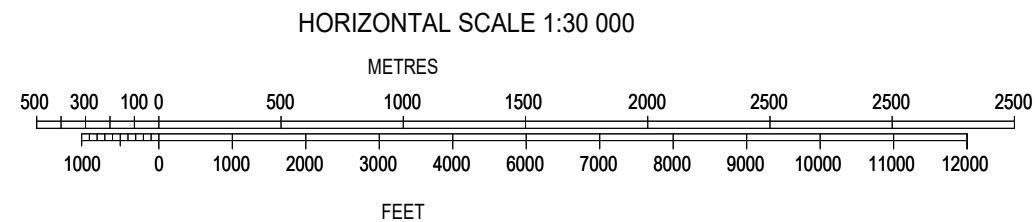
RWY 05 / 23

DECLARED DISTANCES

RWY 05	RWY 23
1588 TAKE-OFF RUN AVAILABLE	1588
1588 TAKE-OFF DISTANCE AVAILABLE	1588
1588 ACCELERATE STOP DISTANCE AVAILABLE	1588
1588 LANDING DISTANCE AVAILABLE	1588



LEGEND	
IDENTIFICATION NUMBER	①
TREE OR SHRUB	✳
HIGHWAY	====
POLE, TOWER, SPIRE, ANTENNA, ETC.	⊙
BUILDING OR LARGE STRUCTURE	■
RAILROAD	+ + +
TERRAIN CONTOUR	~ ~ ~
TERRAIN PENETRATING OBSTACLE PLANE	▲



ORDER OF ACCURACY
HORIZONTAL 01 M
VERTICAL 01 M

Change:
VAR. DIRECTION

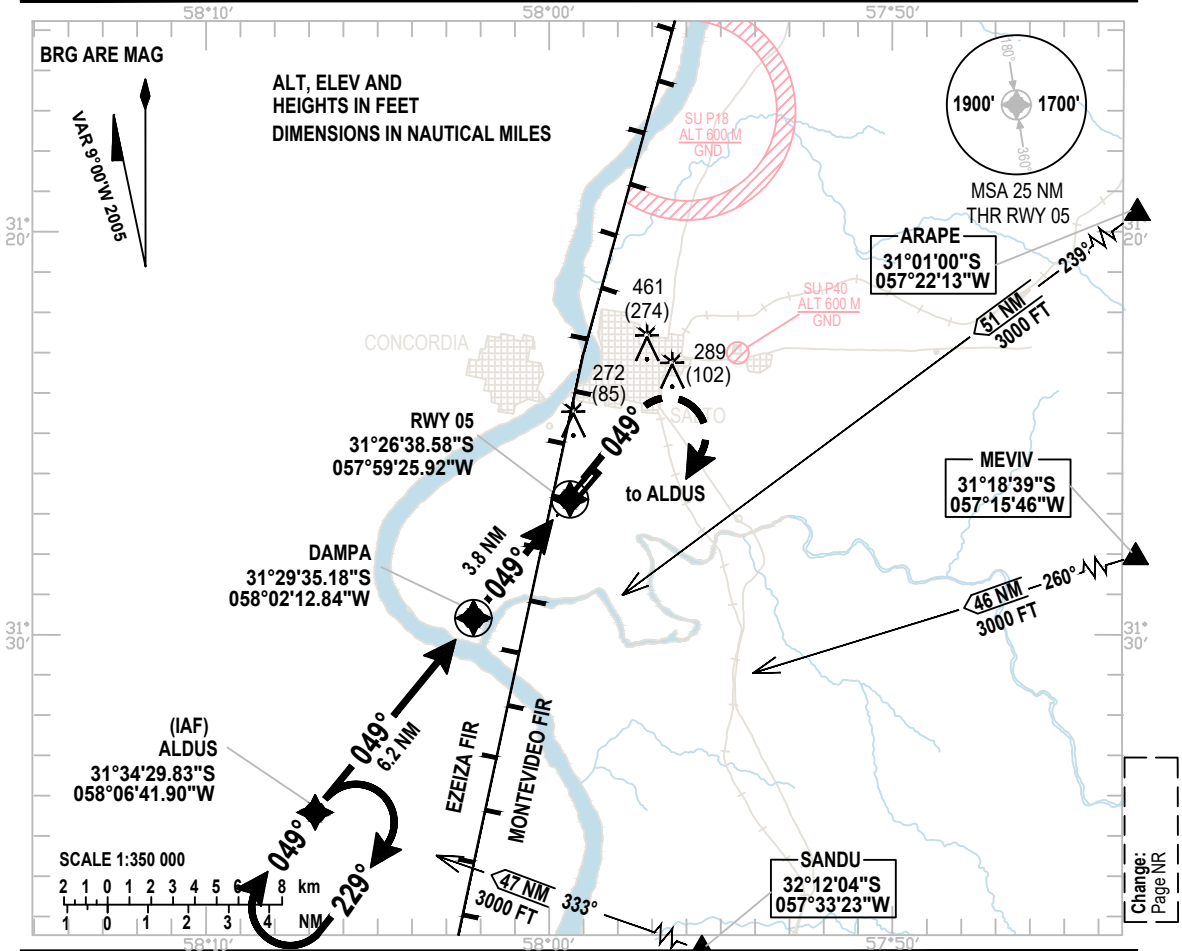
**INTENTIONALLY
LEFT BLANK**

INSTRUMENT
APPROACH
CHART - ICAO

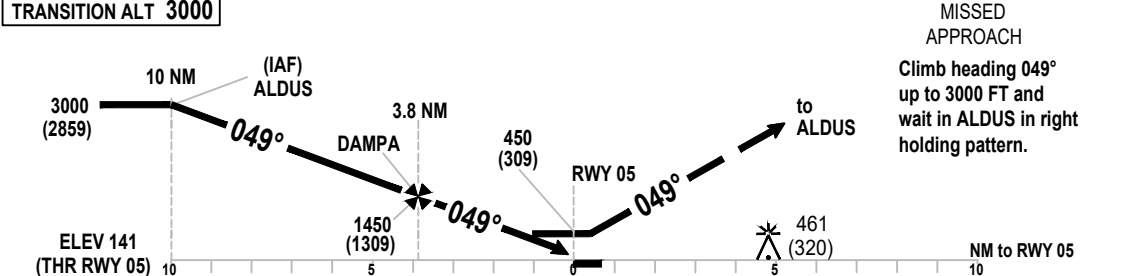
AERODROME ELEV **141 FT**
HEIGHTS RELATED TO
AL THR RWY 05 - ELEV 141 FT

TWR 118.8 - 122.1

SALTO/Intl
Nueva Hespérides
RNAV (GNSS)
RWY 05



TRANSITION ALT 3000



OCA/H		A	B	C	D								
GPS		450(309)											
VIS		1200 M	1600 M	SALS INOP									
Straight-in Approach													
Circling VIS		570 (429)	980 (839)	1100 (959)	4500 m								
		1600 m	3500 m										
						KT	80	100	120	140	160	180	200
						Min:Sec	3:45	3:00	2:30	2:08	1:48	1:36	1:30
						Rate of descent	5,2%						
						Feet/Min	400	500	600	700	800	900	1000
						NM RWY 05	0.7	2	3	3.8			
						ALTITUDE	450	880	1200	1450			
						HEIGHT	309	739	1059	1309			

**INTENTIONALLY
LEFT BLANK**