

AD 2. AERODROMES**SUCA AD 2.3-1 AERODROME LOCATION INDICATOR AND NAME**

SUCA - COLONIA/International "Laguna de los Patos"

SUCA 2.3-2 AERODROME GEOGRAPHICAL AND ADMINISTRATIVE DATA

1	<i>ARP coordinates and site at AD</i>	342705S 0574601W Apron centre
2	<i>Direction and distance from (city)</i>	9 KM SE from the city
3	<i>Elevation/Reference temperature</i>	20 M (66 FT) / 28°C
4	<i>Geoid undulation at AD ELEV PSN</i>	16 M
5	<i>MAG VAR/Annual change</i>	☛ 11° W (JAN 2025) / 0.14° increasing
6	<i>AD operator, address, telephone, telefax, e-mail address, AFS address, website address</i>	Dirección Nacional de Aviación Civil e Infraestructura Aeronáutica Aeropuerto Intl de Colonia Tel: 4522 4853, 4522 2319, 4522 2501 Telefax: 4522 2319 e-mail: operacionessuca@dinacia.gub.uy AFS: SUCAYTYX
7	<i>Types of traffic permitted (IFR/VFR)</i>	IFR/VFR
8	<i>Remarks</i>	Nil

SUCA AD 2.3-3 OPERATIONAL HOURS

1	<i>AD Operator</i>	MON – SUN 10:00 to 22:00 UTC
2	<i>Customs and immigration</i>	O/R
3	<i>Health and sanitation</i>	Only in the city
4	<i>AIS Briefing Office</i>	As AD Operator
5	<i>ATS Reporting Office (ARO)</i>	As AD Operator
6	<i>MET Briefing Office</i>	As AD Operator
7	<i>ATS</i>	MON - SUN 10:00 to 22:00 UTC
8	<i>Fuelling</i>	MON – SUN 11:00 to 20:00 UTC
9	<i>Handling</i>	As AD Operator
10	<i>Security</i>	Nil
11	<i>De-icing</i>	Nil
12	<i>Remarks</i>	Nil

SUCA AD 2.3-4 HANDLING SERVICES AND FACILITIES

1	<i>Cargo-handling facilities</i>	2 cages
2	<i>Fuel/oil types</i>	Fuel 100/130, JET A-1 / Oil: Nil
3	<i>Fuelling facilities/capacity</i>	Fuel 100/130: 9.000 L; JET A-1: 6.000 L
4	<i>De-icing facilities</i>	Nil
5	<i>Hangar space for visiting aircraft</i>	Nil
6	<i>Repair facilities for visiting aircraft</i>	Nil
7	<i>Remarks</i>	Nil

SUCA AD 2.3-5 PASSENGER FACILITIES

1	<i>Hotels</i>	In the city
2	<i>Restaurants</i>	In the city
3	<i>Transportation</i>	☛Taxis O/R; bus service at 1000 M
4	<i>Medical facilities</i>	In the city
5	<i>Bank and Post Office</i>	In the city
6	<i>Tourist Office</i>	In the city
7	<i>Remarks</i>	Nil

SUCA AD 2.3-6 RESCUE AND FIRE FIGHTING SERVICES

1	<i>AD category for fire fighting</i>	Manual extinguishers
2	<i>Rescue equipment</i>	Nil
3	<i>Capability for removal of disabled aircraft</i>	Nil
4	<i>Remarks</i>	In case of major accident, FAU aircraft support immediate response, FAU rescue personnel, firefighters and doctors specializing in severe polytrauma.

SUCA AD 2.3-7 SEASONAL AVAILABILITY - CLEARING

1	<i>Types of clearing equipment</i>	Nil
---	------------------------------------	-----

SUCA AD 2.3-8 APRONS, TAXIWAYS AND CHECK LOCATIONS/POSITIONS DATA

1	<i>Apron surface and strength</i>	Surface: bituminous treatment Strength: 5700 KG
2	<i>Taxiway width, surface and strength</i>	Width: 15 M Surface: bituminous treatment Strength: 5700 KG
3	<i>Altimeter checkpoint location and elevation</i>	Apron centre (342705S/0574601W) 27 M
4	<i>VOR/INS checkpoints</i>	Nil
5	<i>Remarks</i>	Nil

SUCA AD 2.3-9 SURFACE MOVEMENT GUIDANCE AND CONTROL SYSTEM AND MARKINGS

1	<i>Use of aircraft stand ID signs, TWY guide lines and visual docking/parking guidance system of aircraft stands</i>	Nil
2	<i>RWY and TWY markings and LGT</i>	RWY: Designation, centre line and THR TWY: Centre line and holding positions.
3	<i>Stop bars</i>	Nil
4	<i>Remarks</i>	Nil

SUCA AD 2.3-10 AERODROME OBSTACLES

<i>In approach/TKOF areas</i>			<i>In circling area and at AD</i>		<i>Remarks</i>
1			2		3
<i>RWY/Area affected</i>	<i>Obstacle type Elevation Markings/LGT</i>	<i>Coordinates</i>	<i>Obstacle type Elevation Markings/LGT</i>	<i>Coordinates</i>	Nil
a	b	c	a	b	
13/APCH	Antenna 126 M 300°	No data AVBL	Antenna 150 M 330°	No data AVBL	

SUCA AD 2.3-11 METEOROLOGICAL INFORMATION PROVIDED

1	<i>Associated MET Office</i>	SUCA
2	<i>Hours of service MET Office outside hours</i>	MON – SUN from 10:00 to 22:00 UTC -
3	<i>Office responsible for TAF preparation Periods of validity</i>	OMA SUMU ☛H24
4	<i>Trend forecast Interval of issuance</i>	Nil
5	<i>Briefing/consultation provided</i>	O/R
6	<i>Flight documentation Language(s) used</i>	O/R -
7	<i>Charts and other information available for briefing or consultation</i>	O/R
8	<i>Supplementary equipment available for providing information</i>	Nil
9	<i>ATS units provided with information</i>	SUCA TWR
10	<i>Additional information (limitation of service, etc.)</i>	OMA SUMU

SUCA AD 2.3-12 RUNWAY PHYSICAL CHARACTERISTICS

<i>Designations RWY NR</i>	<i>TRUE BRG</i>	<i>Dimensions of RWY (M)</i>	<i>Strength (PCR) and surface of RWY and SWY</i>	<i>THR coordinates. RWY end coordinates. THR geoid undulation</i>	<i>THR elevation and highest elevation of TDZ of precision APP RWY</i>
1	2	3	4	5	6
13	117.96°	1 370 x 30	5700 KG Bituminous treatment	342712.60S 0574638.02W 342712.60S 0574638.02W GUND 16.0 M	THR 20 M/66 FT -
31	297.96°	1 370 x 30	5700 KG Bituminous treatment	342733.53S 0574550.42W 342733.53S 0574550.42W GUND 16.0 M	THR 10 M/33 FT TDZ 12 M/40 FT

<i>Slope of RWY-SWY</i>	<i>SWY dimensions (M)</i>	<i>CWY dimensions (M)</i>	<i>Strip dimensions (M)</i>	<i>OFZ</i>	<i>Remarks</i>
7	8	9	10	11	12
+0.2%/+0.71%/+1.1%/ +0.7% (225 M) (350 M) (325 M) (470 M)	Nil	Nil	1 490 x 280	Nil	Nil
-0.7%/-1.1%/-0.7%/ -0.2% (470 M) (325 M) (350 M) (225 M)	Nil	Nil	1 490 x 280	Nil	Nil

SUCA AD 2.3-13 DECLARED DISTANCES

<i>RWY Designator</i>	<i>TORA (M)</i>	<i>TODA (M)</i>	<i>ASDA (M)</i>	<i>LDA (M)</i>	<i>Remarks</i>
1	2	3	4	5	6
13	1 370	1 370	1 370	1 370	Nil
31	1 370	1 370	1 370	1 370	Nil

SUCA AD 2.3-14 APPROACH AND RUNWAY LIGHTING

<i>RWY Desig- nator</i>	<i>APCH LGT type LEN INTST</i>	<i>THR LGT colour WBAR</i>	<i>VASIS (MEHT) PAPI</i>	<i>TDZ, LGT LEN</i>	<i>RWY Centre Line LGT Length, spacing, colour, INTST</i>	<i>RWY edge LGT LEN, spacing colour INTST</i>	<i>RWY End LGT colour WBAR</i>	<i>SWY LGT LEN (M) colour</i>	<i>Remarks</i>
1	2	3	4	5	6	7	8	9	10
13	Nil	Nil	Nil	Nil	Nil	Nil	Nil	Nil	Nil
31	Nil	Nil	Nil	Nil	Nil	Nil	Nil	Nil	Nil

SUCA AD 2.3-15 OTHER LIGHTING, SECONDARY POWER SUPPLY

1	<i>ABN/IBN location, characteristics and hours of operation</i>	ABN: TWR building / IBN: Nil
2	<i>LDI location and LGT Anemometer location and LGT</i>	WDI: 600 M S of ARP Anemometer: 800 M of RWY centre line
3	<i>TWY edge and centre line lighting</i>	Edge: Nil Centre: Nil
4	<i>Secondary power supply/switch-over time</i>	Secondary power supply: 200 KW generator. Switch-over time: 10 SEC
5	<i>Remarks</i>	Nil

SUCA AD 2.3-16 HELICOPTER LANDING AREA

1	<i>Coordinates TLOF or THR of FATO</i>	Nil
2	<i>TLOF and/or FATO elevation M/FT</i>	Nil
3	<i>TLOF and FATO area dimensions, surface, strength, marking</i>	Nil
4	<i>True and MAG BRG FATO</i>	Nil
5	<i>Declared distance available</i>	Nil
6	<i>APP and FATO lighting</i>	Nil
7	<i>Remarks</i>	Nil

SUCA AD 2.3-17 ATS AIRSPACE

1	<i>Designation and lateral limits</i>	COLONIA CTR Radius arc of 10 NM centred at 342705S/0574601W (ARP) up to FIR limit COLONIA ATZ Circle, radius 4 NM (7.4 KM) centred at 342705S/0574601W
2	<i>Vertical limits</i>	CTR: SFC up to FL 055 ATZ: SFC up to 450 M
3	<i>Airspace classification</i>	From MON to SUN from 10:00 to 22:00 UTC: "C"; others: "G"
4	<i>ATS unit call sign Language(s)</i>	Colonia Tower ☛ Spanish, English (O/R)
5	<i>Transition altitude</i>	900 M
6	<i>Remarks</i>	Nil

SUCA AD 2.3-18 ATS COMMUNICATION FACILITIES

<i>Service designation</i>	<i>Call sign</i>	<i>Frequency</i>	<i>Hours of operation</i>	<i>Remarks</i>
1	2	3	4	5
TWR	Colonia Tower	120.8 MHZ 122.1 MHZ	As AD	Nil

SUCA AD 2.3-19 RADIO NAVIGATION AND LANDING AIDS

<i>Type of aid, MAG VAR, Type of supported OP (for VOR/ILS/MLS, give declination)</i>	<i>ID</i>	<i>Frequency</i>	<i>Hours of operation</i>	<i>Position of transmitting antenna coordinates</i>	<i>Elevation of DME transmitting antenna</i>	<i>Remarks</i>
1	2	3	4	5	6	7
Nil	Nil	Nil	Nil	Nil	Nil	

SUCA AD 2.3-22 FLIGHT PROCEDURES

✈ IFR takeoff minimums

✈ The minimum applicable for take-off in terms of ceiling and visibility shall be the minimum expected for the instrumental approach procedure published for the runway in use. If a visual circulation is necessary, the minimums published for the runway in use shall be applied.

- a) ✈ Aircraft must be equipped with the necessary instruments for the operation;
- b) ✈ the necessary radio aids must be operational

✈ IFR landing minimums

✈ The minimum necessary for landing in terms of ceiling and visibility, shall be the minimum for the instrumental approach procedure published for the runway in use.

Minimum vertical separation in the Traffic Circuit of Colonia.

Nil.

Coordination, control and communication procedures between Colonia Aerodrome (SUCA) and Jorge Newbery Aeroparque (SABE) - 01 APR 2019

VFR traffic routing

VFR traffic from Ezeiza FIR originated in SABE whose destination is SUCA aerodrome, shall be routed by SURBO corridor and shall be instructed to communicate with Colonia Torre.

VFR traffic from SUCA aerodrome and whose destination is SABE aerodrome, shall be routed by SURBO corridor and shall be instructed to communicate with Aeroparque Torre.

All aircrafts must maintain communication / listening at the frequencies established according to the airspace overfly.

All aircrafts must have transponder (Mode A and C) operative and fly to the flight levels or altitudes established in the corresponding Table of Cruise Levels, in the AIP of each State.

IFR traffic routing

IFR flights shall be developed at 600 M (2000 FT) or higher, and must fly at the flight levels or altitudes established in the AIP of each State.

Traffic to SUCA Aerodrome:

The aircraft shall receive the control authorization from Aeroparque Approach up to SURBO position. Between SABE and SURBO the aircraft shall maintain communication with Aeroparque Aproximación and from the position SURBO shall communicate with Colonia Torre.

Note: in the event that the aircraft reaches SURBO position and has not established communication with Colonia Torre, it must comply with the Communication Failure Procedure established by ICAO.

☛ Traffic to SABE Aerodrome:

☛ Colonia Torre shall coordinate the air traffic control authorization with Aeroparque Aproximación through the established direct oral link.

☛ This authorization shall be extended from SURBO position and shall include the following information:

- a) Estimated time of approach;
- b) SSR code assigned;
- c) altitude or flight level (FL);
- d) ATS Dependency and frequency with which you must communicate in SURBO.

☛ ***Coordination***

☛ The coordination prior to the transfer shall be made through the exchange of ATS messages prescribed according to ICAO Doc. 4444-PANS ATM and in particular of the following:

- FPL- Flight plan
- DLA- Delay
- CHG- Modification
- ALR- Alert
- CNL- Cancellation

☛ For the coordination among the agencies, direct oral channels shall be used.

SUCA AD 2.3-24 CHARTS RELATED TO AN AERODROME

Aerodrome/Heliport Chart - ICAO.....	AD 2.3-11
Instrument Approach Chart - ICAO RNAV (GNSS) RWY 13	AD 2.3-13
Instrument Approach Chart - ICAO RNAV (GNSS) RWY 31	AD 2.3-15

AERODROME/HELIPORT **34°27'05"S** **ELEV 20**
CHART - ICAO **057°46'01"W** **(66)**

TWR 120.8 122.1
APRON 120.8 - 122.1

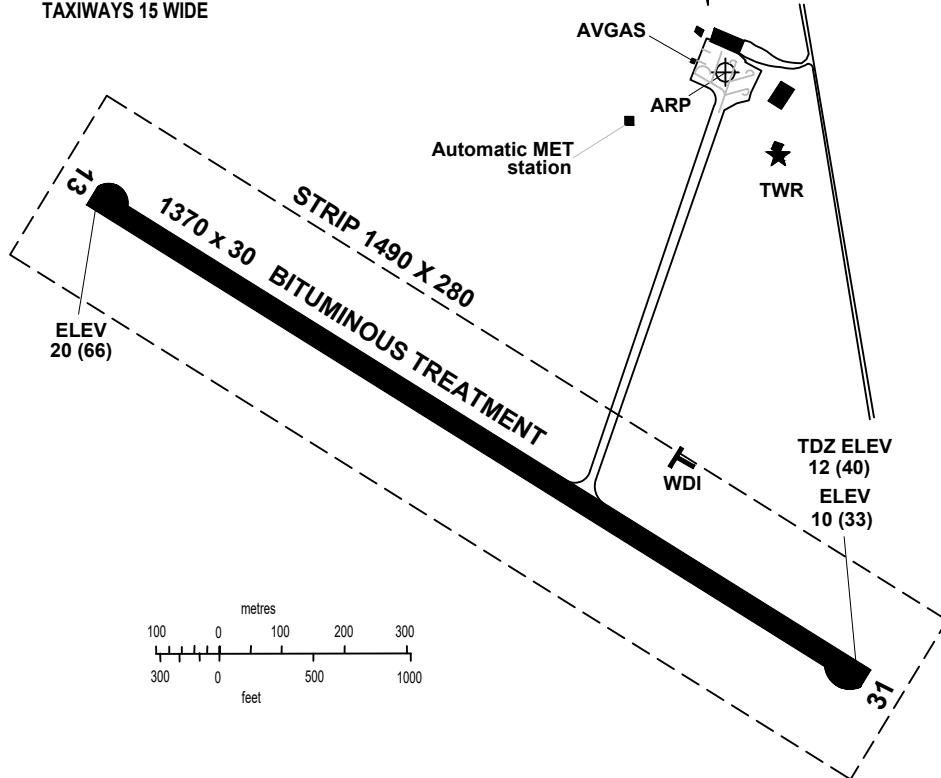
COLONIA/Intl
Laguna de los Patos

RWY	DIRECTION	THR	GUND	BEARING STRENGTH
13	129°	34°27'12.60"S 57°46'38.02"W	16.0 M	Runway, Apron and Taxiways ➔ 5700 KG
31	309°	34°27'33.53"S 57°45'50.42"W	16.0 M	

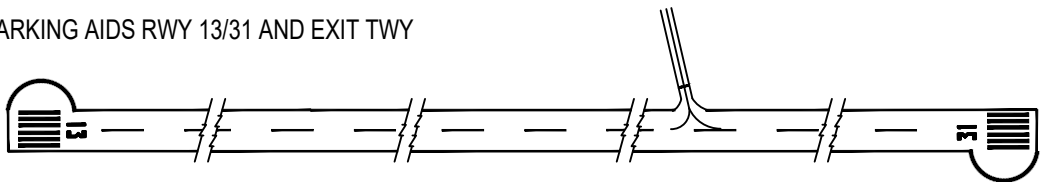
VAR 1° N - 2025
ANNUAL RATE
OF CHANGE 0.9° W

ELEVATIONS IN METRES (AND FEET)
DIMENSIONS IN METRES
BEARING ARE MAGNETIC

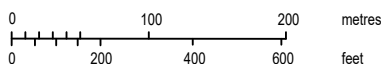
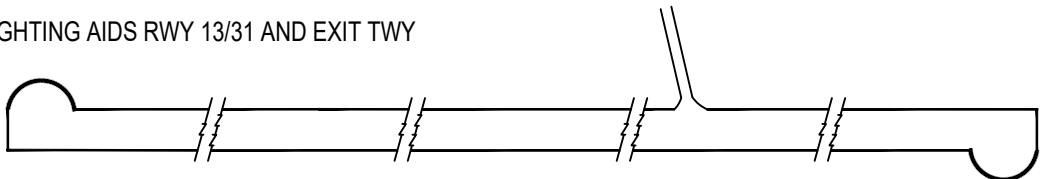
TAXIWAYS 15 WIDE



MARKING AIDS RWY 13/31 AND EXIT TWY



LIGHTING AIDS RWY 13/31 AND EXIT TWY



Change:
STRENGTH

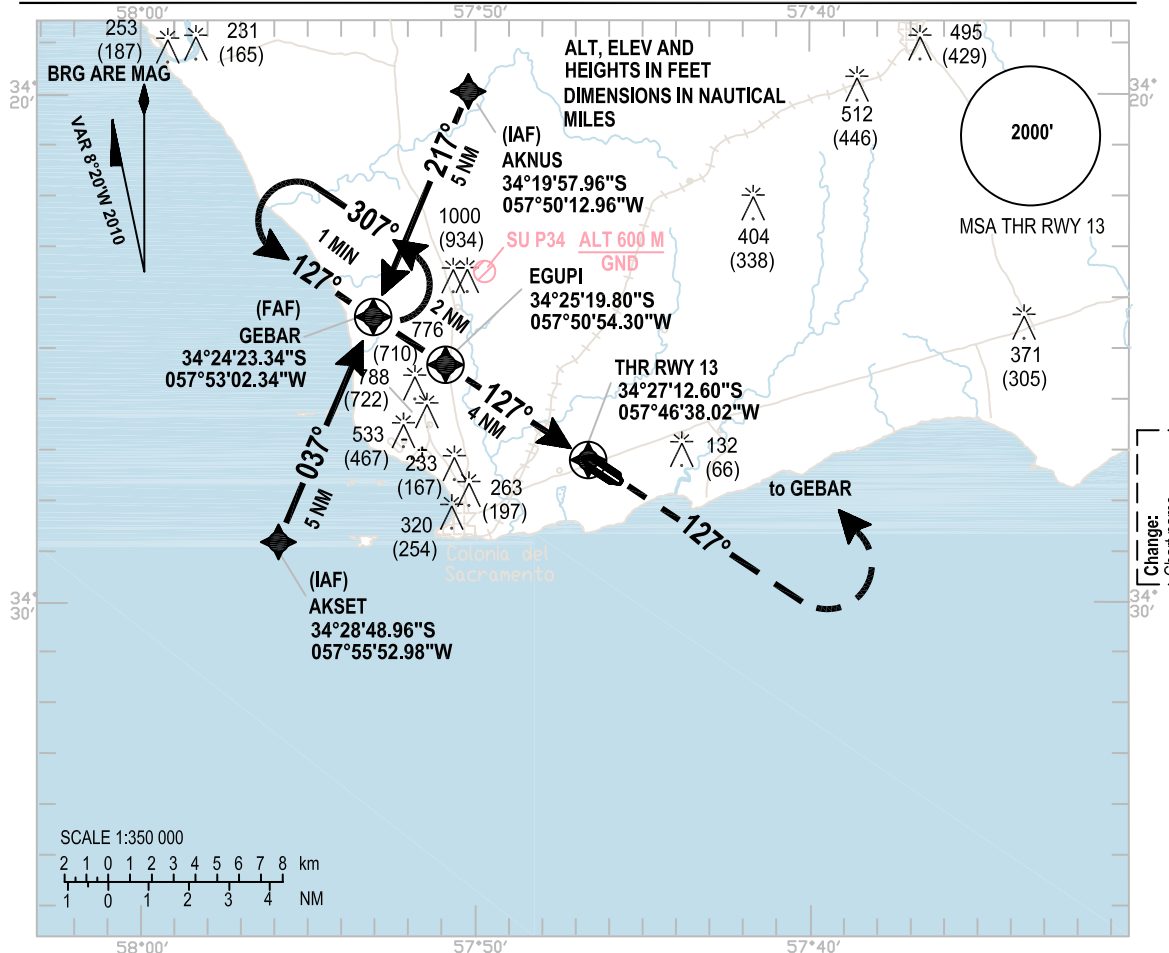
**INTENTIONALLY
LEFT BLANK**

INSTRUMENT
APPROACH
CHART - ICAO

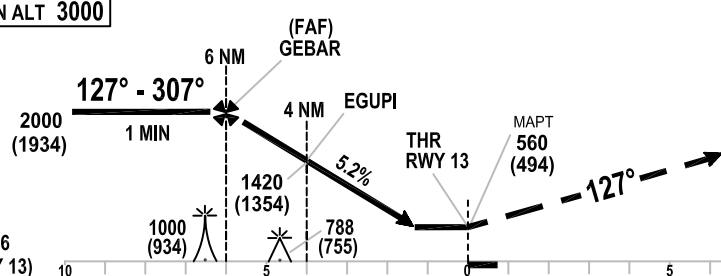
AERODROME ELEV **66 FT**
HEIGHTS RELATED TO
THR RWY 13 - ELEV 66 FT

TWR 120.8 - 122.1

COLONIA/Intl
Laguna de los
Patos RNAV (GNSS)
RWY 13



TRANSITION ALT 3000



MISSED
APPROACH
Climb on RWY 13
with heading 127°
up to 2000 FT,
then turn left
heading to GEBAR

ELEV 66 (THR RWY 13)		10				5				0				5				10			
OCA/H		A	B	C	D																
GPS		560(494)																			
VIS		1600 M				2000 M															
Straight-in Approach																					
Circling VIS		Circling not allowed																			
						EGUPI to RWY 13				Rate of descent 5,2%											
										KT											
										Min : Sec											
										Feet/Min											
						NM RWY 13															
										ALTITUDE											
										HEIGHT											

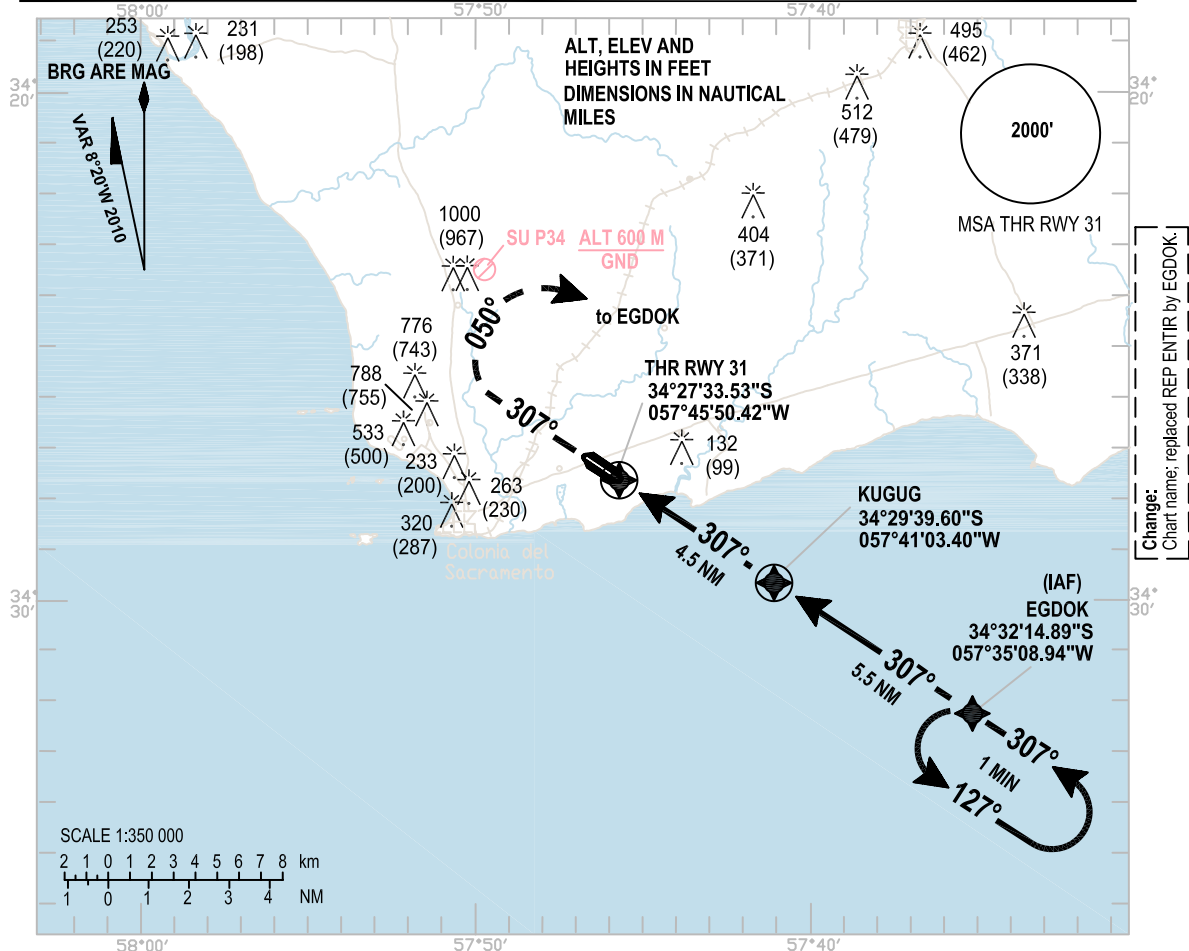
**INTENTIONALLY
LEFT BLANK**

INSTRUMENT
APPROACH
CHART - ICAO

AERODROME ELEV **66 FT**
HEIGHTS RELATED TO
THR RWY 31 - ELEV 33 FT

TWR 120.8 - 122.1

COLONIA/Intl
Laguna de los
Patos RNAV (GNSS)
RWY 31

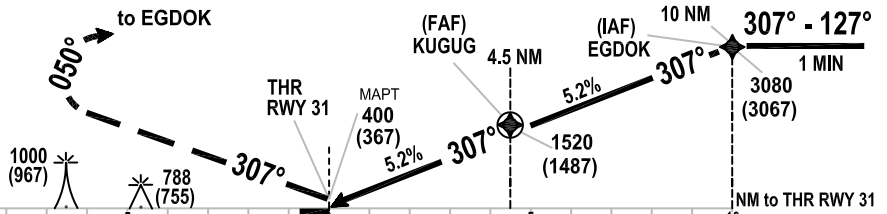


Change:
Chart name: replaced REP ENTIR by EGDOK.

MISSED
APPROACH

TRANSITION ALT 3000

Climb on RWY 31 on right turn with heading 050° to 3000 FT, then head to EGDOK and ask for directives to TWR.



ELEV 33
(THR RWY 31)

OCA/H		A	B	C	D															
Straight-in Approach	GPS	400 (367)																		
	VIS	1500 M		2000 M		KUGUG to RWY 31						KT	80	100	120	140	160	180	200	
	VDP	1 NM THR 31				Rate of descent 5,2%						Min : Sec	3:52	3:00	2:30	2:10	1:50	1:42	1:25	
						NM RWY 31						Feet/Min	430	530	640	750	850	950	1060	
Circling VIS		Circling not allowed										NM RWY 31	0	1	2	3	4	5		
												ALTITUDE	88	400	720	1050	1370	1520		
												HEIGHT	55	367	687	1017	1304	1487		

**INTENTIONALLY
LEFT BLANK**