

AD 2. AERODROMES**SUDU AD 2.4-1 AERODROME LOCATION INDICATOR AND NAME**

SUDU - DURAZNO/Santa Bernardina Intl of Alternative

SUDU 2.4-2 AERODROME GEOGRAPHICAL AND ADMINISTRATIVE DATA

1	<i>ARP coordinates and site at AD</i>	332123S 0562946W DUR VOR/DME location
2	<i>Direction and distance from (city)</i>	3 KM E from Durazno city
3	<i>Elevation/Reference temperature</i>	93 M (305 FT) / 32°C
4	<i>Geoid undulation at AD ELEV PSN</i>	17 M
5	<i>MAG VAR/Annual change</i>	12° W (JAN 2020) / 0.15° increasing
6	<i>AD operator, address, telephone, telefax, e-mail address, AFS address, website address</i>	Puerta del Sur S.A. Aeropuerto Intl de Alternativa Santa Bernardina Durazno Tel: 4362 2182, 4362 2449 Telefax: 4362 4927 Puerta del Sur S.A.Operations: 092075236 e-mail: sudu@dinacia.gub.uy AFS: SUDUYTYX
7	<i>Types of traffic permitted (IFR/VFR)</i>	IFR/VFR
8	<i>Remarks</i>	Nil

SUDU AD 2.4-3 OPERATIONAL HOURS

1	<i>AD Operator</i>	H24
2	<i>Customs and immigration</i>	O/R
3	<i>Health and sanitation</i>	First aids and ambulance
4	<i>AIS Briefing Office</i>	Nil
5	<i>ATS Reporting Office (ARO)</i>	MON - FRI 11:00 to 17:00 UTC. HOL and others: O/R previous coordination 24 HR in advance with Base OPS Centre (MON - FRI 11:00 to 17:00 UTC TEL (598)43622182)
6	<i>MET Briefing Office</i>	As ATS Reporting Office (ARO)
7	<i>ATS</i>	☛ MON - FRI 10:00 to 22:00 UTC.
8	<i>Fuelling</i>	As ATS Reporting Office (ARO)
9	<i>Handling</i>	As ATS Reporting Office (ARO)
10	<i>Security</i>	As ATS Reporting Office (ARO)
11	<i>De-icing</i>	Nil
12	<i>Remarks</i>	Nil

SUDU AD 2.4-4 HANDLING SERVICES AND FACILITIES

1	<i>Cargo-handling facilities</i>	Nil
2	<i>Fuel/oil types</i>	☛ 100/130, JET-A1, AVGAS in Commercial Apron
3	<i>Fuelling facilities/capacity</i>	☛ 100/130: 18 000 L, JET-A1: 30 000 L, AVGAS: 5 000 L
4	<i>De-icing facilities</i>	Nil
5	<i>Hangar space for visiting aircraft</i>	Nil
6	<i>Repair facilities for visiting aircraft</i>	Nil
7	<i>Remarks</i>	Nil

SUDU AD 2.4-5 PASSENGER FACILITIES

1	<i>Hotels</i>	In the city
2	<i>Restaurants</i>	In the city
3	<i>Transportation</i>	Taxis O/R; DLY bus service from 09:00 to 21:00 UTC
4	<i>Medical facilities</i>	First aids and ambulance
5	<i>Bank and Post Office</i>	Nil
6	<i>Tourist Office</i>	Nil
7	<i>Remarks</i>	Nil

SUDU AD 2.4-6 RESCUE AND FIRE FIGHTING SERVICES

1	<i>AD category for fire fighting</i>	☛ CAT 07
2	<i>Rescue equipment</i>	Tools and approach equipment
3	<i>Capability for removal of disabled aircraft</i>	Nil
4	<i>Remarks</i>	In case of major accident, FAU aircraft support immediate response, FAU rescue personnel, firefighters and doctors specializing in severe polytrauma.

SUDU AD 2.4-7 SEASONAL AVAILABILITY - CLEARING

1	<i>Types of clearing equipment</i>	Nil
---	------------------------------------	-----

SUDU AD 2.4-8 APRONS, TAXIWAYS AND CHECK LOCATIONS/POSITIONS DATA

1	<i>Apron surface and strength</i>	Surface: asphalt concrete - concrete Strength: 21/F/B/W/U Commercial Apron: Surface: asphalt concrete Strength: 12/F/B/Y/U
2	<i>Taxiway width, surface and strength</i>	Width: Taxiways "A", "B", "C" and "D" 23 M; "E" 10.5 M Surface: asphalt concrete Strength: Taxiways "A", "B" and "C" limited to 20 tons; "E" 12/F/B/Y/U
3	<i>Altimeter checkpoint location and elevation</i>	Superior apron (332129S/0563030W) 82 M
4	<i>VOR checkpoints</i>	Nil
5	<i>INS checkpoints</i>	Nil
6	<i>Remarks</i>	Nil

SUDU AD 2.4-9 SURFACE MOVEMENT GUIDANCE AND CONTROL SYSTEM AND MARKINGS

1	<i>Use of aircraft stand ID signs, TWY guide lines and visual docking/parking guidance system of aircraft stands</i>	Commercial Apron: aircraft stands identification signs. TWY "E": centre line signs. Visual docking guidance system: Nil
2	<i>RWY and TWY markings and LGT</i>	RWY: <u>Markings</u> : designation, centre line, THR and runway side stripe marking, 10/28 holding position (65 M of 03/21 centre line) TWY: <u>Markings</u> : designation of centre line LGT: TWY edge lights in TWY A, B, C, D and E.
3	<i>Stop bars</i>	Nil
4	<i>Remarks</i>	Nil

SUDU AD 2.4-10 AERODROME OBSTACLES

<i>In approach/TKOF areas</i>				<i>In circling area and at AD</i>			<i>Remarks</i>
1				2			3
<i>RWY/Area affected</i>	<i>Obstacle type</i>	<i>Elevation</i>	<i>Coordinates</i>	<i>Obstacle type</i>	<i>Elevation</i>	<i>Coordinates</i>	Nil
<i>Markings/LGT</i>			<i>Markings/LGT</i>				
a	b	c	a	b			
21/APCH	Trees 30 M		No data AVBL	Trees 20 M		No data AVBL	

SUDU AD 2.4-11 METEOROLOGICAL INFORMATION PROVIDED

1	<i>Associated MET Office</i>	☛ SUDU
2	<i>Hours of service</i> <i>MET Office outside hours</i>	☛ H24 ☛ O/R
3	<i>Office responsible for TAF preparation</i> <i>Periods of validity</i>	☛ OMA SUMU ☛ O/R
4	<i>Trend forecast</i> <i>Interval of issuance</i>	☛ Nil
5	<i>Briefing/consultation provided</i>	☛ O/R
6	<i>Flight documentation</i> <i>Language(s) used</i>	☛ O/R
7	<i>Charts and other information available for briefing or consultation</i>	☛ O/R
8	<i>Supplementary equipment available for providing information</i>	☛ Nil
9	<i>ATS units provided with information</i>	DURAZNO TWR, OPS
10	<i>Additional information (limitation of service, etc.)</i>	☛ OMA SUMU

SUDU AD 2.4-12 RUNWAY PHYSICAL CHARACTERISTICS

<i>Designations RWY NR</i>	<i>TRUE BRG</i>	<i>Dimensions of RWY (M)</i>	<i>Strength (PCN) and surface of RWY and SWY</i>	<i>THR coordinates. RWY end coordinates. THR geoid undulation</i>	<i>THR elevation and highest elevation of TDZ of precision APP RWY</i>
1	2	3	4	5	6
03	☛023.28°	2 279 x 45	21/F/B/W/T Asphalt concrete and concrete	332209.82S 0563016.63W 332209.82S 0563016.63W GUND 16.6 M	THR 83 M/272 FT
21	☛203.28°	2 279 x 45	21/F/B/W/T Asphalt concrete and concrete	332101.81S 0562941.76W 332101.81S 0562941.76W GUND 16.6 M	THR 93 M/305 FT
10	☛086.62°	1 452 x 30	Asphalt concrete	332134.45S 0563039.00W 332134.45S 0563039.00W GUND 16.6 M	THR 84 M/276 FT
28	☛266.62°	1 452 x 30	Asphalt concrete	332131.67S 0562942.92W 332131.67S 0562942.92W GUND 16.6 M	THR 90 M/295 FT
<i>Slope of RWY-SWY</i>	<i>SWY dimensions (M)</i>	<i>CWY dimensions (M)</i>	<i>Strip dimensions (M)</i>	<i>OFZ</i>	<i>Remarks</i>
7	8	9	10	11	12
+0.46% (2279 M)	Nil	Nil	☛2 399 x 280	Nil	Nil
-0.46% (2279M)	Nil	Nil	☛2 399 x 280	Nil	Nil
+0.27%/0%/+0.56%/ +1.1%/+0.8%/+0.5%/0% (100 M) (250 M) (750 M) (100 M) (50 M) (100 M) (100 M)	Nil	Nil	☛1 572 x 280	Nil	Nil
-0%/-0.5%/-0.8%/-1.1%/ -0.56%/0%/+0.27% (100 M) (100 M) (50 M) (100 M) (750 M) (250 M) (100 M)	Nil	Nil	☛1 572 x 280	Nil	Nil

SUDU AD 2.4-13 DECLARED DISTANCES

<i>RWY Designator</i>	<i>TORA (M)</i>	<i>TODA (M)</i>	<i>ASDA (M)</i>	<i>LDA (M)</i>	<i>Remarks</i>
1	2	3	4	5	6
03	2 279	2 279	2 279	2 279	Nil
21	2 279	2 279	2 279	2 279	Nil
10	1 452	1 452	1 452	1 452	Nil
28	1 452	1 452	1 452	1 452	Nil

SUDU AD 2.4-14 APPROACH AND RUNWAY LIGHTING

<i>RWY Desig- nator</i>	<i>APCH LGT type LEN INTST</i>	<i>THR LGT colour WBAR</i>	<i>VASIS (MEHT) PAPI</i>	<i>TDZ, LGT LEN</i>	<i>RWY Centre Line LGT Length, spacing, colour, INTST</i>	<i>RWY edge LGT LEN, spacing colour INTST</i>	<i>RWY End LGT colour WBAR</i>	<i>SWY LGT LEN (M) colour</i>	<i>Remarks</i>
1	2	3	4	5	6	7	8	9	10
03	SALS 420 M LIH	Green Red	☛ Nil	Nil	Nil	2279 M, 60 M White Amber	- Amber	Nil	Nil
21	MALSR CAT I 720 M LIH	Green Red	☛ Nil	Nil	Nil	2279 M, 60 M White Amber	- Amber	Nil	Nil
10	Nil	Green Red	☛ Nil	Nil	Nil	1452 M, 60 M White Amber	- Amber	Nil	Nil
28	Nil	Green Red	Nil	Nil	Nil	1452 M, 60 M White Amber	- Amber	Nil	Nil

SUDU AD 2.4-15 OTHER LIGHTING, SECONDARY POWER SUPPLY

1	<i>ABN/IBN location, characteristics and hours of operation</i>	ABN: Nil / IBN: Nil
2	<i>LDI location and LGT Anemometer location and LGT</i>	WDI: 294 M SE THR 10 lighted Anemometer: 400 M of THR RWY 21
3	<i>TWY edge and centre line lighting</i>	Edge: all the TWY Centre: Nil
4	<i>Secondary power supply/switch-over time</i>	Secondary power supply: 200 KW generator. Switch-over time: 10 SEC
5	<i>Remarks</i>	Nil

SUDU AD 2.4-16 HELICOPTER LANDING AREA

1	<i>Coordinates TLOF or THR of FATO</i>	Nil
2	<i>TLOF and/or FATO elevation M/FT</i>	Nil
3	<i>TLOF and FATO area dimensions, surface, strength, marking</i>	Nil
4	<i>True and MAG BRG FATO</i>	Nil
5	<i>Declared distance available</i>	Nil
6	<i>APP and FATO lighting</i>	Nil
7	<i>Remarks</i>	Nil

SUDU AD 2.4-17 ATS AIRSPACE

1	<i>Designation and lateral limits</i>	DURAZNO CTR ● Circle, radius 10 NM centred at VOR/DME "DUR". ● DURAZNO ATZ ● Circle, radius 04 NM centred at VOR/DME "DUR".
2	<i>Vertical limits</i>	● CTR: GND up to FL 055 ATZ: GND up to 450 M
3	<i>Airspace classification</i>	● From MON to FRI from 10:00 to 22:00 UTC: "C"; others: "G".
4	<i>ATS unit call sign Language(s)</i>	Durazno Tower Spanish, English (O/R)
5	<i>Transition altitude</i>	900 M
6	<i>Remarks</i>	MIL AD and INTL ALTN

SUDU AD 2.4-18 ATS COMMUNICATION FACILITIES

<i>Service designation</i>	<i>Call sign</i>	<i>Frequency</i>	<i>Hours of operation</i>	<i>Remarks</i>
1	2	3	4	5
TWR	Durazno Tower	120.4 MHZ 126.2 MHZ	H24	Nil

SUDU AD 2.4-19 RADIO NAVIGATION AND LANDING AIDS

<i>Type of aid, MAG VAR, Type of supported OP (for VOR/ILS/MLS, give declination)</i>	<i>ID</i>	<i>Frequency</i>	<i>Hours of operation</i>	<i>Position of transmitting antenna coordinates</i>	<i>Elevation of DME transmitting antenna</i>	<i>Remarks</i>
1	2	3	4	5	6	7
VOR/DME (12°W/2025)	DUR CH 122 X	117.5 MHZ	H24	332122.5S 0562945.8W	90 M/295 FT	Nil
LLZ RWY 21 ILS CAT I	IDUR	109.9 MHZ	H24	332218.6S 0563021.1W	Nil	Nil
GS 21			H24	332113.3S 0562942.5W	Nil	Nil
DME 21			H24	332113.4S 0562942.2W	Nil	Nil

SUDU AD 2.4-22 FLIGHT PROCEDURES



Reduction of the minimum IFR takeoffs

The minimum visibility required for takeoff is: 1 600 M.

The ceiling shall be equal to or greater than the maximum established in the Instrument Approach Charts.



Communications Failure

In case of communication failure the pilot in command shall act according to the communication failure procedures (ICAO Annex 2).



Routing Flight Plans

Flight plans will be routed through the AFTN or alternatively by fax.

Minimum vertical separation in the Traffic Circuit of Durazno.

Nil.

SUDU AD 2.4-23 ADDITIONAL INFORMATION

IBIS Bird Collisions Notification

Whenever an aircraft experiences a bird strike or ingestion, the incident must be reported to both the Civil Aviation Authority (CAA) and the Aerodrome Operator.

This must be done through the DINACIA website, where the IBIS Registration form is available:
<https://www.dinacia.gub.uy/servicio/reporte-ibis>

If the aircraft sustains damage that causes a significant delay or grounding, notification must be sent to aicinspectorestac@dinacia.gub.uy (Commercial Air Transport Office) or by calling 2604 0290 (24-hour service).

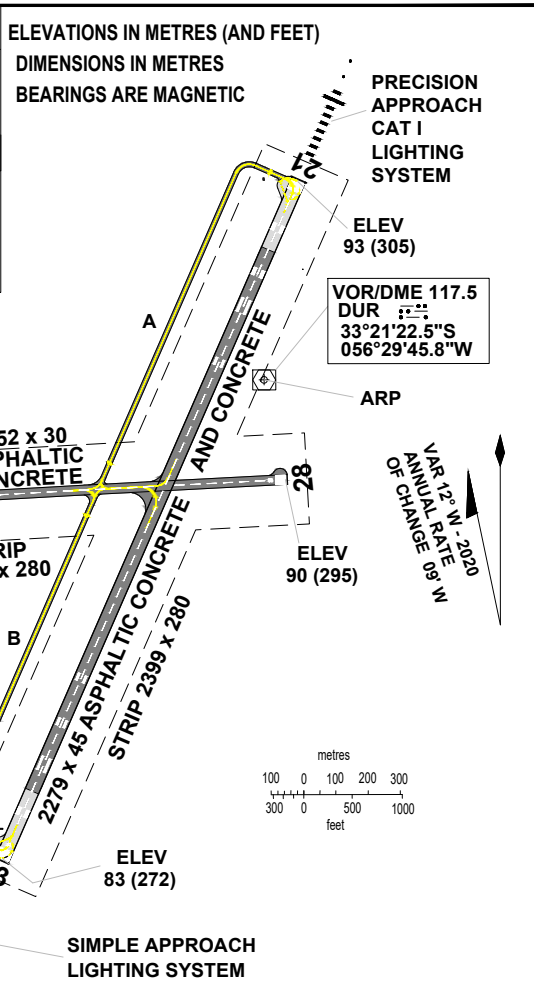
SUDU AD 2.4-24 CHARTS RELATED TO AN AERODROME

Aerodrome/Heliport Chart - ICAO RWY 03/21	AD 2.4-13
Aerodrome/Heliport Chart - ICAO RWY 10/28	AD 2.4-15
Instrument Approach Chart - ICAO DME VOR RWY 03	AD 2.4-17
Instrument Approach Chart - ICAO RNAV (GNSS) RWY 10	AD 2.4-19
Instrument Approach Chart - ICAO RNAV (GNSS) RWY 21	AD 2.4-21
Instrument Approach Chart - ICAO HI VOR DME RWY 03	AD 2.4-23
Instrument Approach Chart - ICAO VOR DME RWY 03	AD 2.4-25

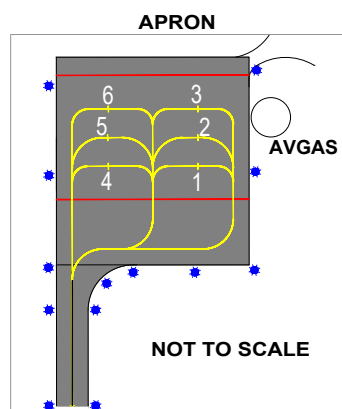
**INTENTIONALLY
LEFT BLANK**

AERODROME/HELIPORT CHART - ICAO	33°21'23"S 056°29'46"W	ELEV 93 (305)	TWR 126.2 APRON 000.0	DURAZNO/Intl Altn Santa Bernardina
------------------------------------	---------------------------	------------------	--------------------------	---------------------------------------

RWY	DIRECTION	THR	GUND	BEARING STRENGTH
03	035°	33°22'09.82"S 56°30'16.63"W	16.6 M	Runway and Apron PCN 21/F/B/W/T
21	215°	33°21'01.81"S 56°29'41.76"W	16.6 M	
10	099°	33°21'34.45"S 56°30'39.00"W	16.6 M	Taxiways "A", "B" and "C" limited to 20 tons.
28	279°	33°21'31.67"S 56°29'42.92"W	16.6 M	Taxiway "E" PCN 12/F/B/Y/U.



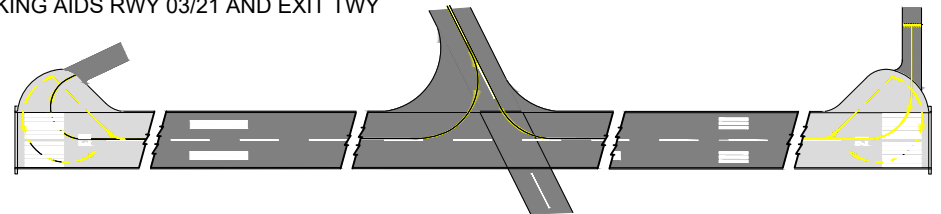
TAXIWAYS "A", "B" and "C" 23 WIDE; "E" 10.5 WIDE



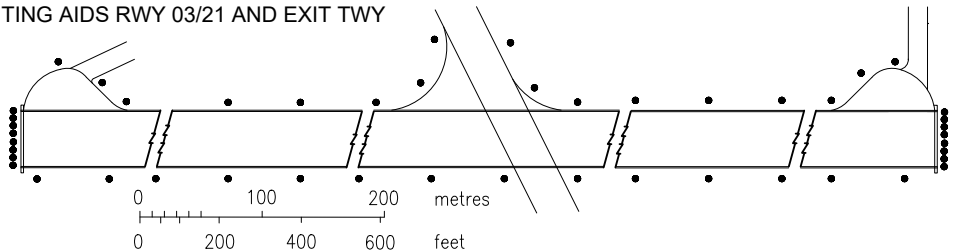
INS COORDINATES FOR AIRCRAFT STANDS

1	33°21'42.88"S	056°30'34.89"W
2	33°21'43.01"S	056°30'35.23"W
3	33°21'43.14"S	056°30'35.54"W
4	33°21'43.72"S	056°30'34.38"W
5	33°21'43.89"S	056°30'34.69"W
6	33°21'44.02"S	056°30'35.03"W

MARKING AIDS RWY 03/21 AND EXIT TWY



LIGHTING AIDS RWY 03/21 AND EXIT TWY

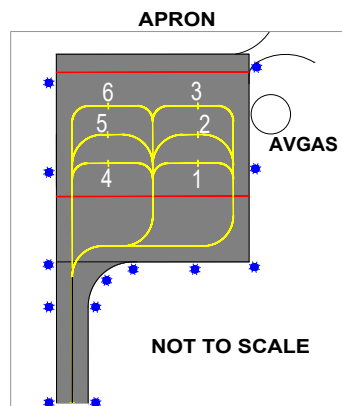


**INTENTIONALLY
LEFT BLANK**

AERODROME/HELIPORT **33°21'23"S ELEV 93** **TWR 126.2** **DURAZNO/Intl Altn**
 CHART - ICAO **056°29'46"W (305)** **APRON 000.0** **Santa Bernardina**

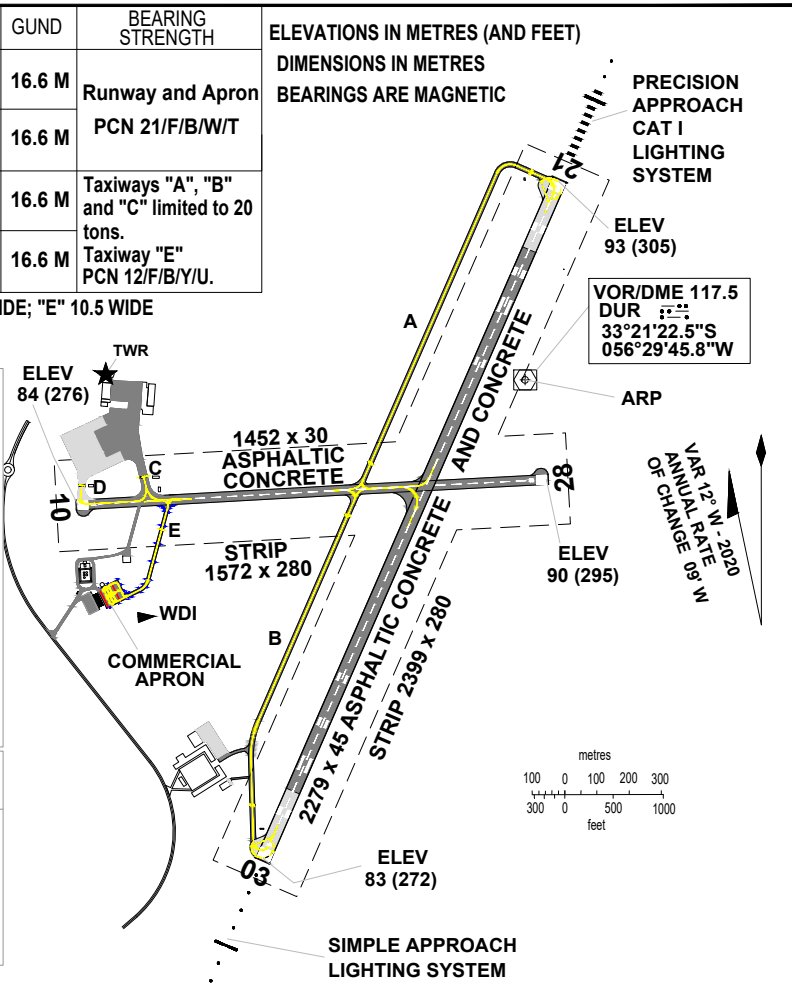
RWY	DIRECTION	THR	GUND	BEARING STRENGTH
03	035°	33°22'09.82"S 56°30'16.63"W	16.6 M	Runway and Apron PCN 21/F/B/W/T
21	215°	33°21'01.81"S 56°29'41.76"W	16.6 M	
10	099°	33°21'34.45"S 56°30'39.00"W	16.6 M	Taxiways "A", "B" and "C" limited to 20 tons.
28	279°	33°21'31.67"S 56°29'42.92"W	16.6 M	Taxiway "E" PCN 12/F/B/Y/U.

TAXIWAYS "A", "B" and "C" 23 WIDE; "E" 10.5 WIDE

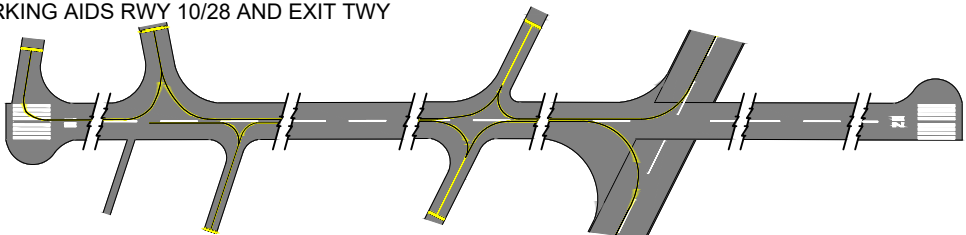


INS COORDINATES FOR AIRCRAFT STANDS

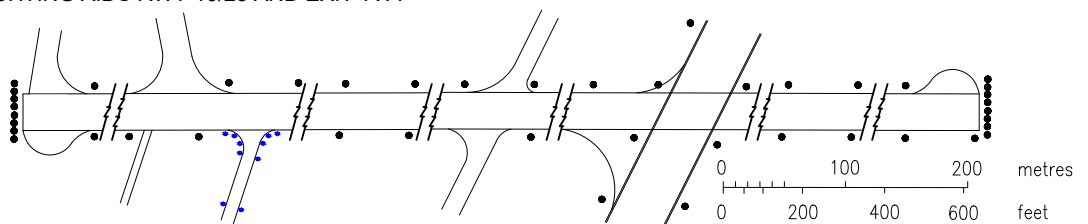
- 1 33°21'42.88"S 056°30'34.89"W
- 2 33°21'43.01"S 056°30'35.23"W
- 3 33°21'43.14"S 056°30'35.54"W
- 4 33°21'43.72"S 056°30'34.38"W
- 5 33°21'43.89"S 056°30'34.69"W
- 6 33°21'44.02"S 056°30'35.03"W



MARKING AIDS RWY 10/28 AND EXIT TWY



LIGHTING AIDS RWY 10/28 AND EXIT TWY



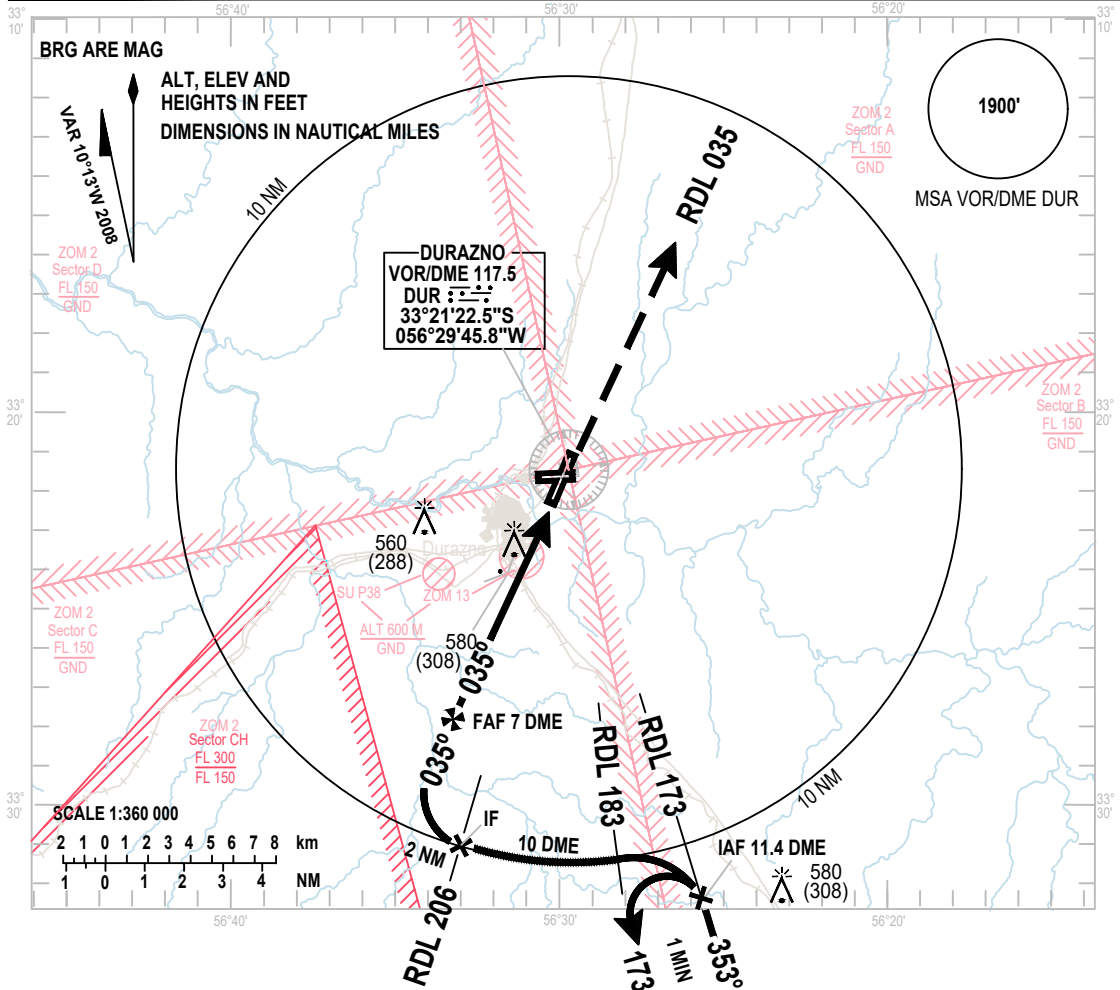
**INTENTIONALLY
LEFT BLANK**

INSTRUMENT
APPROACH
CHART - ICAO

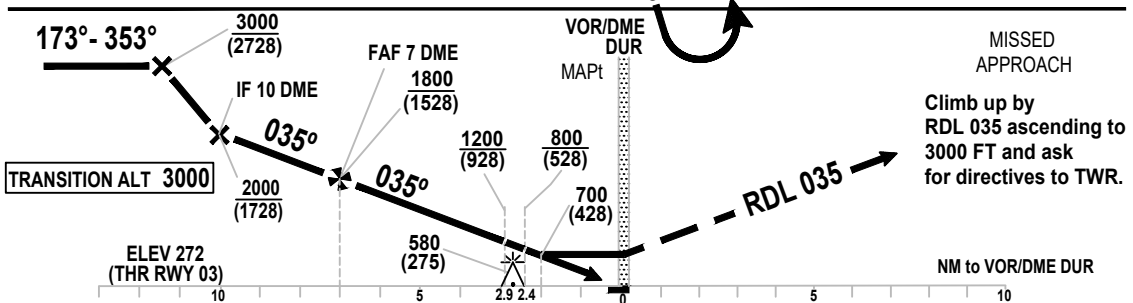
AERODROME ELEV **305 FT**
HEIGHTS RELATED TO
THR RWY 03 - ELEV 272 FT

TWR 120.4 - 126.2

DURAZNO/Intl Altn
Santa Bernardina
DME VOR
RWY 03



Change: [ZOM 2, FREQ TWR]



OCA/H	A	B	C	D
DME VOR	700 (428)			
Straight-in Approach	1500 M	3000 M		
Circling	880 (575)	980 (675)	1080 (775)	
	1500 m	3500 m	4500 m	

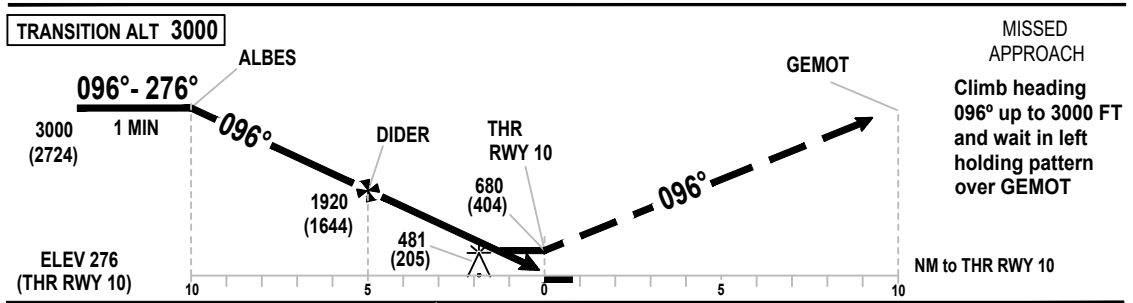
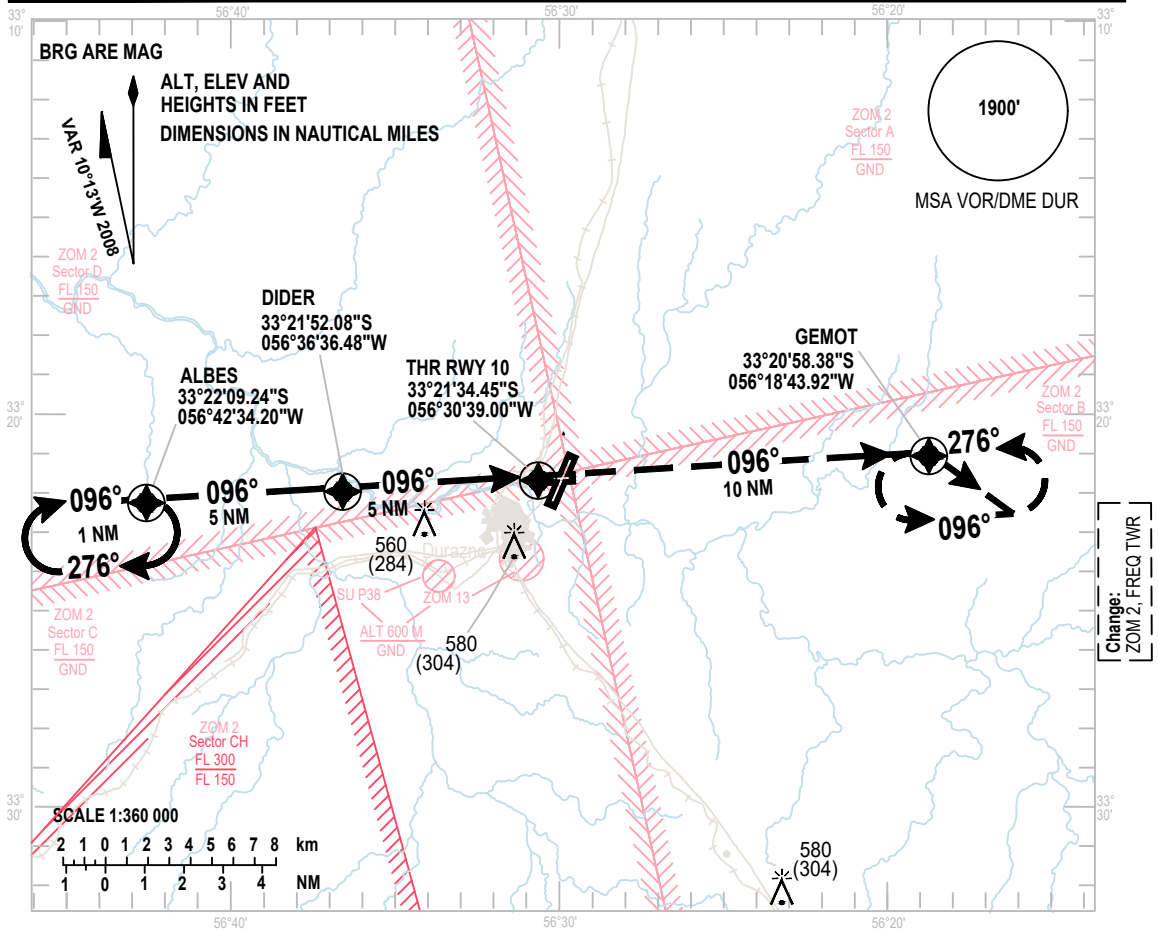
**INTENTIONALLY
LEFT BLANK**

INSTRUMENT
APPROACH
CHART - ICAO

AERODROME ELEV **305 FT**
HEIGHTS RELATED TO
THR RWY 09 - ELEV 276 FT

TWR 120.4 - 126.2

DURAZNO/Intl Atn
Santa Bernardina
RNAV (GNSS)
RWY 10



OCA/H		A	B	C	D						
GPS		680(404)									
VIS		1600 M		2000 M							
Straight-in Approach											
VIS-ALS INOP in M											
Circling		880 (575)	980 (675)	1080 (775)							
VIS		1500 m	1600 m	3500 m	4500 m						
WFAF - RWY 09 (5 NM)		Min : Seg	80	100	120	140	160	180	200		
Velocidad vertical de descenso 5,2%		Pies/ Min	3:45	3:00	2:30	2:08	1:48	1:36	1:30		
NM RWY 09		1.3	2	3	4	5					
ALTITUD		680	970	1290	1605	1920					
ALTURA		404	695	1014	1330	1545					

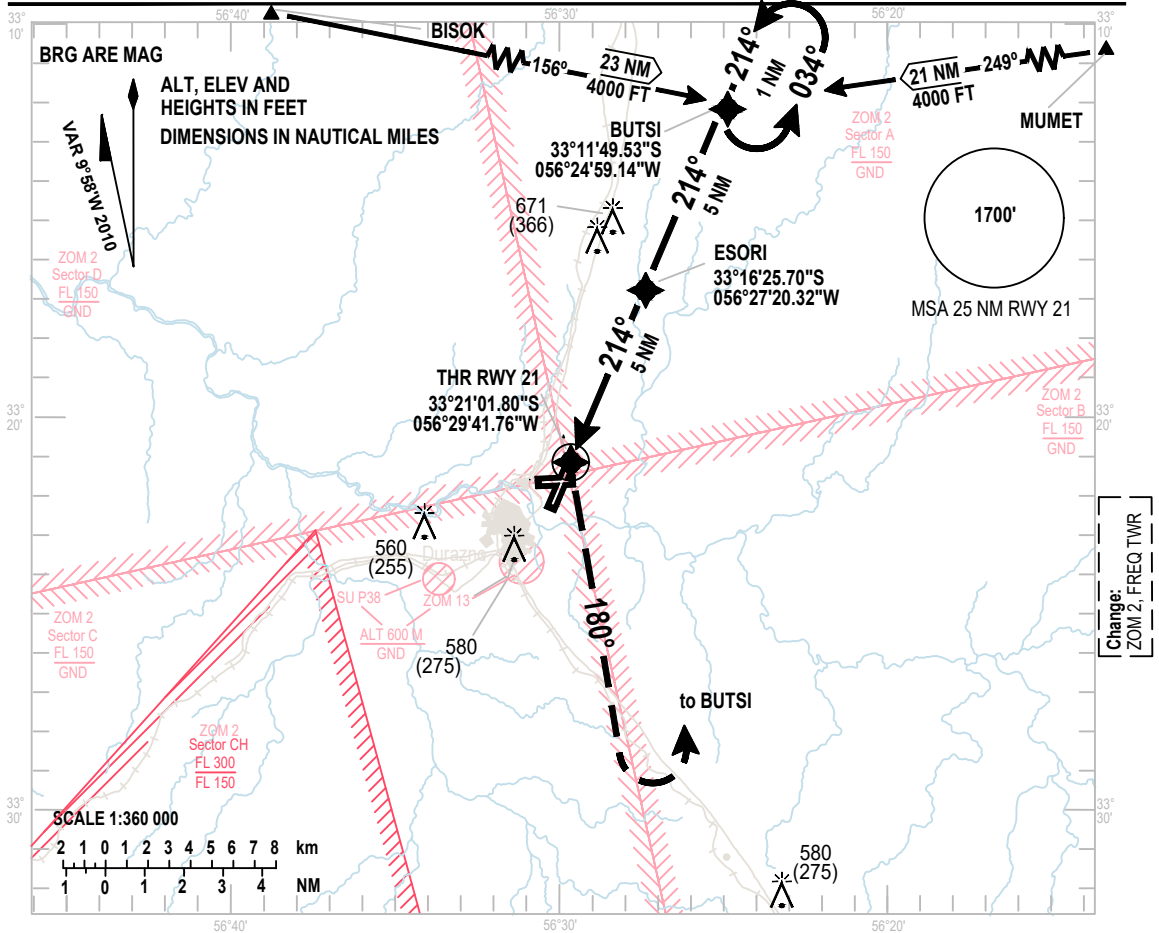
**INTENTIONALLY
LEFT BLANK**

INSTRUMENT
APPROACH
CHART - ICAO

AERODROME ELEV **305 FT**
HEIGHTS RELATED TO
THR RWY 21 - ELEV 305 FT

TWR 120.4 - 126.2

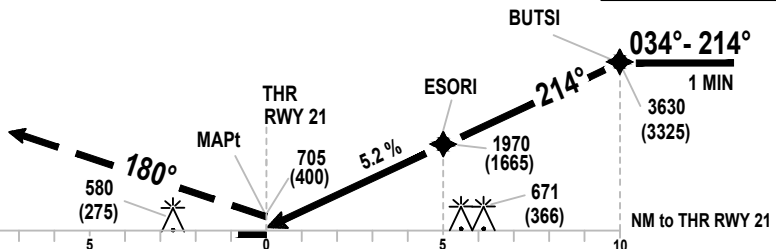
DURAZNO/Intl Atn
Santa Bernardina
RNAV (GNSS)
RWY 21



MISSED
APPROACH

TRANSITION ALT 3000

Climb heading
180° up to 2000 FT.
Turn left ascending
up to 3000 FT direct
to BUTSI and ask
for directives to TWR.



ELEV 305
(THR RWY 21)

Straight-in Approach	OCA/H	A	B	C	D	E	ESORI - Mapt (5 NM)	KT	80	100	120	140	160	180	200		
	GPS VIS	705 (400)							Min : Sec	3:52	3:00	2:30	2:10	1:50	1:42	1:25	
Straight-in Approach	VIS	1200 M - 1500 M ALS INOP						Rate of descent	5,2%	Feet/Min	430	530	640	750	850	950	1060
	VIS-ALS INOP in M	1200 M - 1500 M		1500 M													
	Circling VIS	880 (575)	980 (675)	1080 (775)													
		1500 m	3500 m	4500 m													

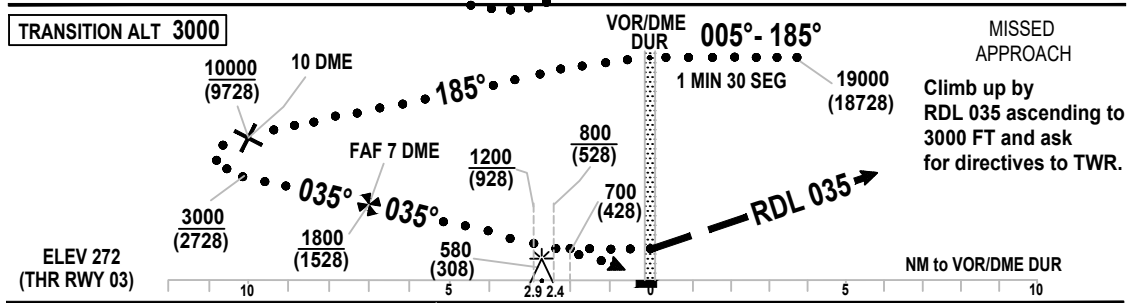
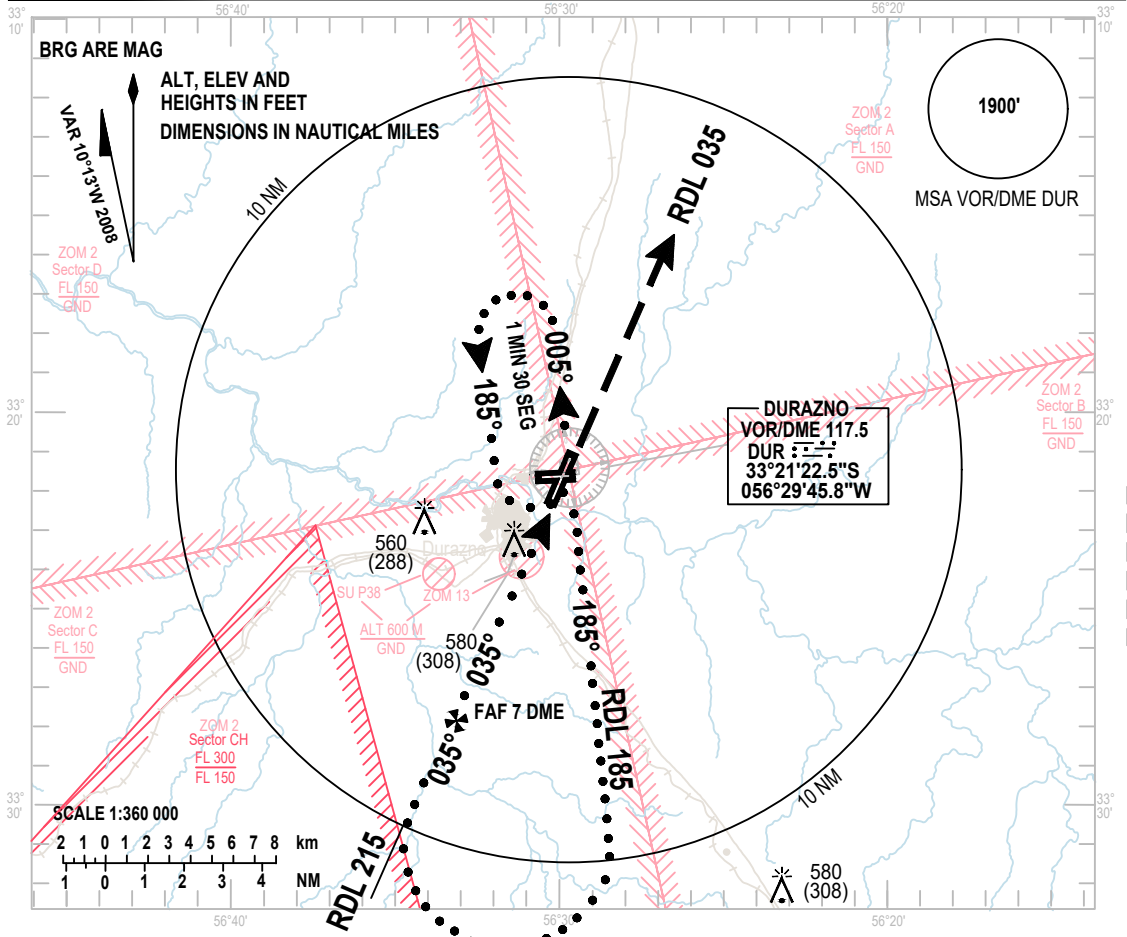
**INTENTIONALLY
LEFT BLANK**

INSTRUMENT
APPROACH
CHART - ICAO

AERODROME ELEV **305 FT**
HEIGHTS RELATED TO
THR RWY 03 - ELEV 272 FT

TWR 120.4 - 126.2

DURAZNO/Intl Atn
Santa Bernardina
HI VOR/DME
RWY 03



OCA/H	C	D							
	VOR	700 (428)							
Straight-in Approach	VIS	3000 M							
Circling									
	VIS	980 (675)	1080 (775)						
		3500 m	4500 m						

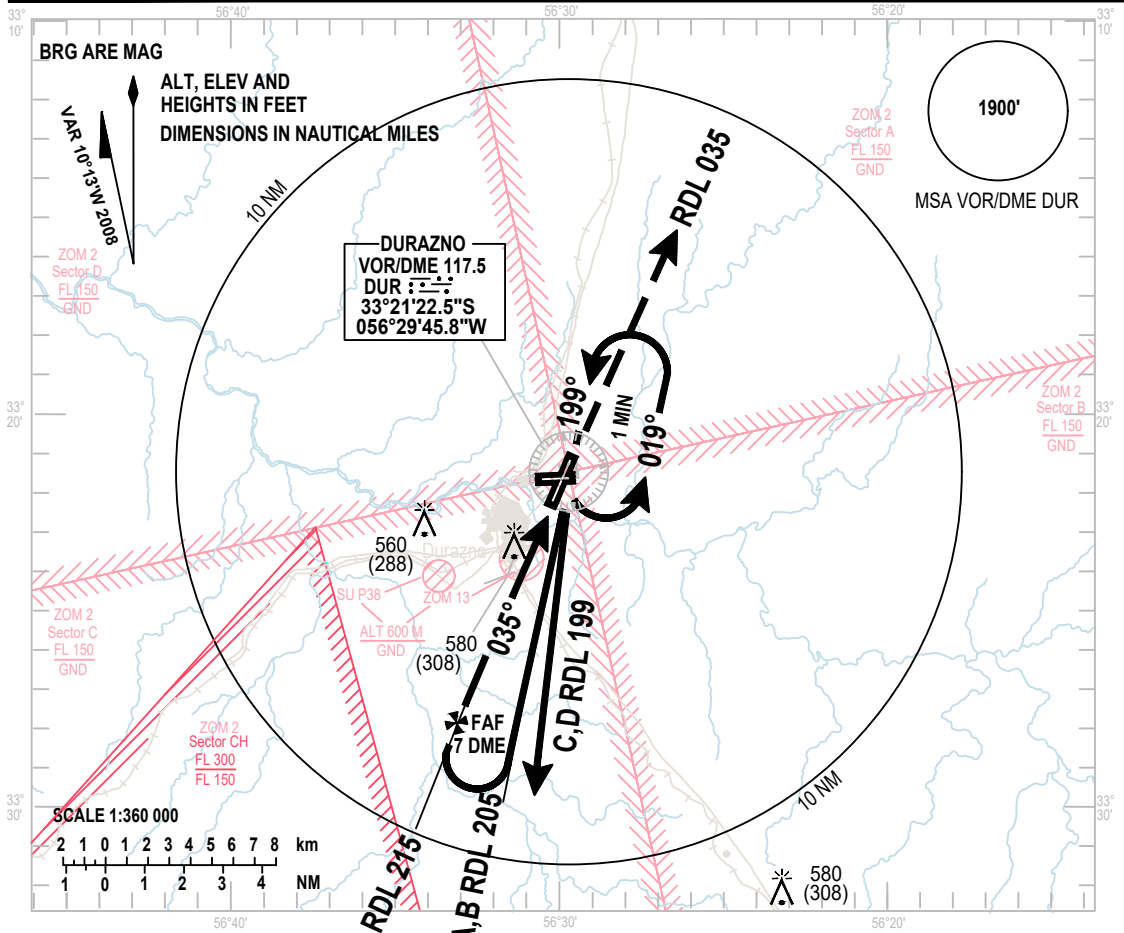
**INTENTIONALLY
LEFT BLANK**

INSTRUMENT
APPROACH
CHART - ICAO

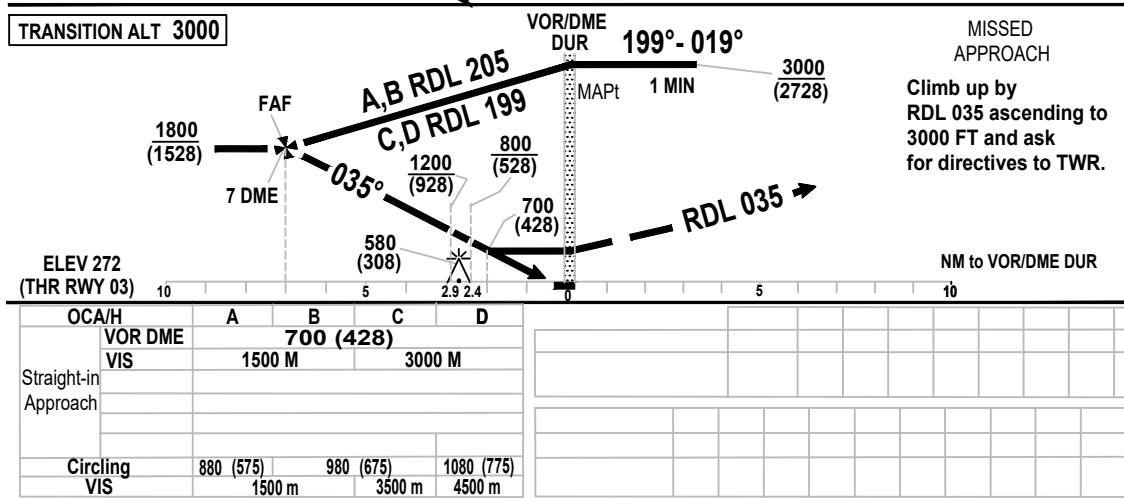
AERODROME ELEV **305 FT**
HEIGHTS RELATED TO
THR RWY 03 - ELEV 272 FT

TWR 120.4 - 126.2

DURAZNO/Intl Atn
Santa Bernardina
VOR/DME
RWY 03



Change:
ZOM 2, FREQ TWR



**INTENTIONALLY
LEFT BLANK**