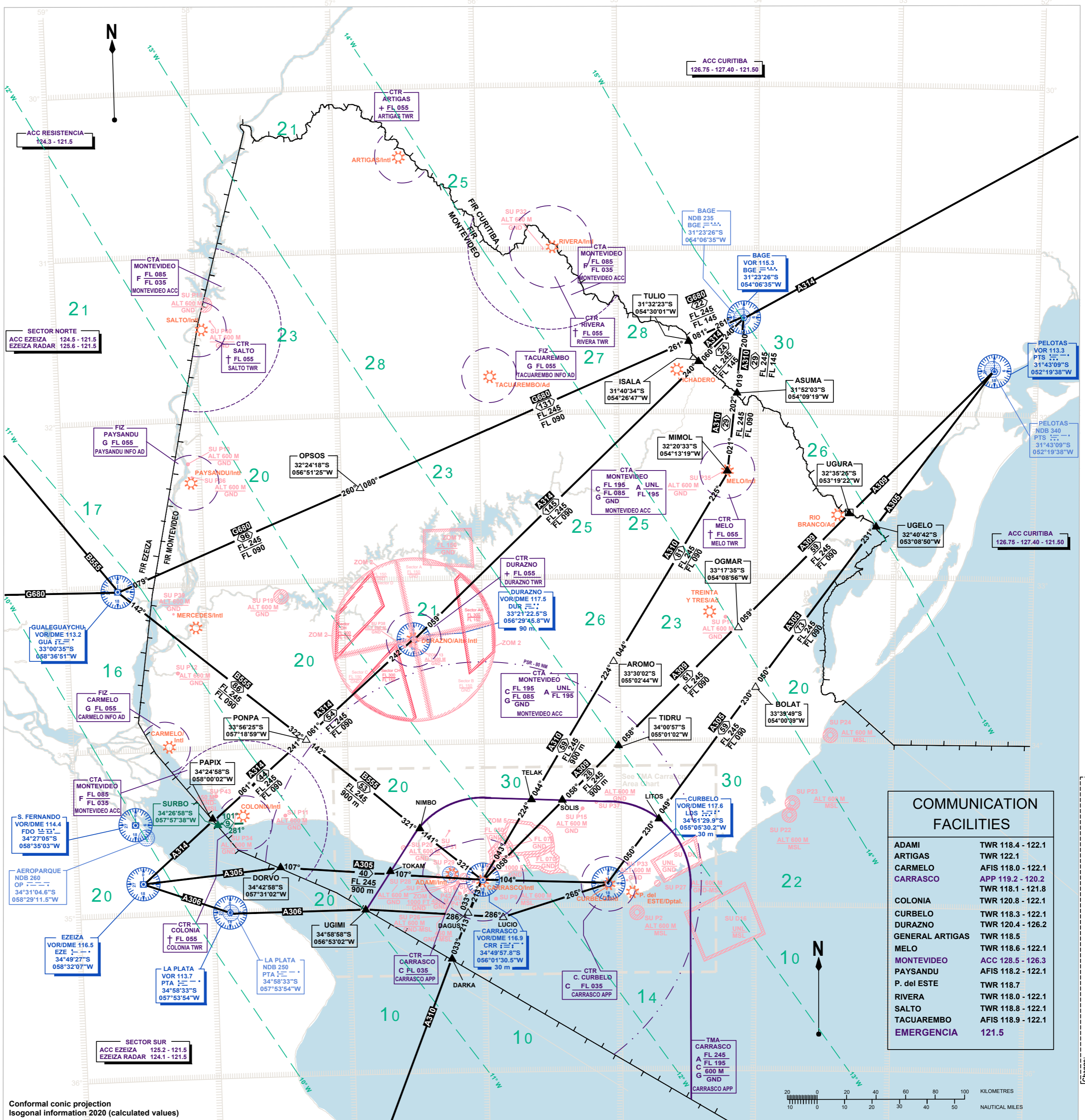
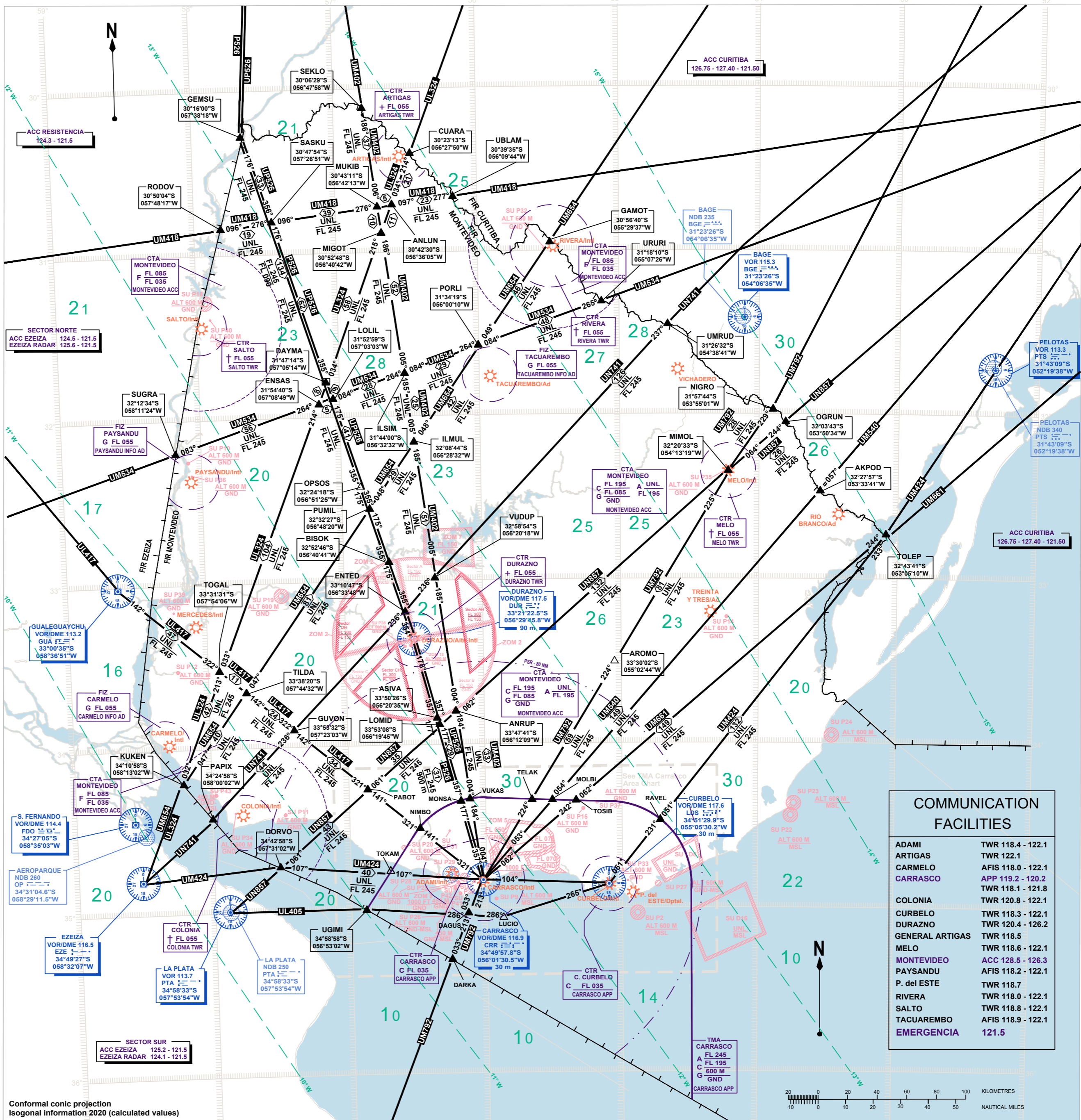


LEGEND	
Aerodrome	
Flight information region (FIR)	
Control area (CTA)	
CTA NAME	CTA MONTEVIDEO
ATS AIRSPACE CLASS	FL 195 A UNL FL 085 A FL 195
UPPER LIMIT	FL 195
LOWER LIMIT	FL 085
ATS UNIT PROVIDING THE SERVICE	MONTEVIDEO ACC
Terminal control area (TMA)	
TMA NAME	TMA CARRASCO
ATS AIRSPACE CLASS	FL 245 A UNL FL 195 A FL 245
UPPER LIMIT	FL 245
LOWER LIMIT	FL 195
ATS UNIT PROVIDING THE SERVICE	CARRASCO APP
Control zone (CTR)	
CTR NAME	CTR CARRASCO
ATS AIRSPACE CLASS	FL 035 C FL 035
UPPER LIMIT	FL 035
ATS UNIT PROVIDING THE SERVICE	CARRASCO APP
ATS AIRSPACE CLASS	Monday to Friday (except holidays) from 10:00 to 22:00 UTC: Class "C" Others: Class "G"
	✳
	✚
	✚
	✚
Conventional navigation route	JA305
ROUTE DESIGNATOR	025° - 225°
MAGNETIC BEARING	UNL
DISTANCE IN NAUTICAL MILES	FL 245
UPPER LIMIT	
MINIMUM FLIGHT ALTITUDE	
Reporting point (REP)	
COMPULSORY FLY-BY	▲
A SOLICITUD FLY-BY	△
COMPULSORY FLYOVER	⊙
A SOLICITUD FLYOVER	⊙
ATS/MET reporting point (MRP)	
COMPULSORY	▲
ON REQUEST	⊠
Restricted airspace	
IDENTIFICATION OR AREA	SU R7
NATIONALITY LETTER	FL 100
VERTICAL LIMITS	GND
P=PROHIBITED	
R=RESTRICTED	
D=DANGER	
VHF omnidirectional radio range (VOR)	
COMPASS ROSE ORIENTED BY MAGNETIC NORTH	
Non-directional radio beacon (NDB)	
Distance measuring equipment (DME)	
Collocated VOR and DME radio navigation aids (VOR/DME)	
Identification for Radio navigation Aids (NAVAID)	
NAME	CARRASCO
NAVAID, FREQUENCY, IDENTIFICATION OR CALL SIGN	VOR/DME 116.9 CRR 116.9 34°49'57.8"S 056°01'30.5"W
GEOGRAPHICAL COORDINATES	30 m
ELEVATION OF DME SITE (TO THE NEAREST 30 M)	
Isogonal or isogon line	
Area minimum altitude	
EACH 1° QUADRILATERAL CONTAIN THE AREA MINIMUM ALTITUDE (AMA) THAT REPRESENTS THE LOWEST ALTITUDE TO BE USED UNDER INSTRUMENTAL METEOROLOGICAL CONDITIONS (IMC). THE AMA WILL PROVIDE A MINIMUM CLEARANCE OF 1000 FEET ABOVE ALL OBSTACLES LOCATED IN THE QUADRILATERAL. IT IS REPRESENTED IN THOUSAND AND HUNDRED OF FEET ABOVE MEAN SEA LEVEL.	
EXAMPLE: 2100 FEET	21

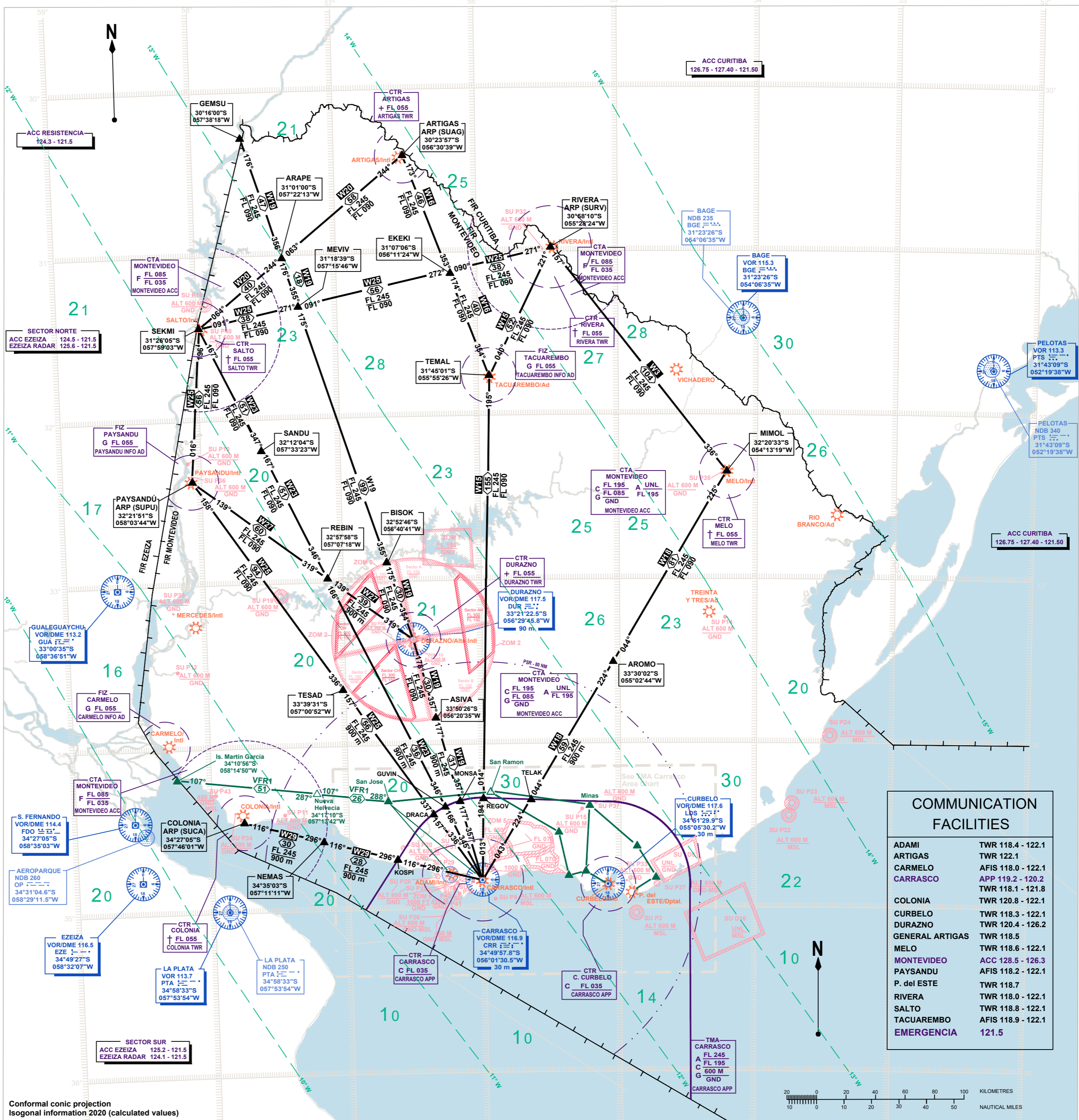


LEGEND	
Aerodrome	
Flight information region (FIR)	
Control area (CTA)	
CTA NAME	MONTEVIDEO
ATS AIRSPACE CLASS	FL 195 A UNL
UPPER LIMIT	FL 085
LOWER LIMIT	FL 195
ATS UNIT PROVIDING THE SERVICE	MONTEVIDEO ACC
Terminal control area (TMA)	
TMA NAME	CARRASCO
ATS AIRSPACE CLASS	FL 245
UPPER LIMIT	FL 195
LOWER LIMIT	FL 195
ATS UNIT PROVIDING THE SERVICE	CARRASCO APP
Control zone (CTR)	
CTR NAME	CARRASCO
ATS AIRSPACE CLASS	FL 035
ATS UNIT THAT PROVIDES THE SERVICE	CARRASCO APP
ATS AIRSPACE CLASS	
Monday to Friday (except holidays) from 10:00 to 22:00 UTC: Class "C" Others: Class "G"	*
Monday to Friday (except holidays) from 11:00 to 23:00 UTC: Class "C" Others: Class "G"	+
Monday to Sunday from 10:00 to 22:00 UTC: Class "C" Others: Class "G"	+
Monday to Friday from 10:00 to 22:00 UTC: Class "C" Others: Class "G"	+
Area navigation route (RNAV)	
ROUTE DESIGNATOR	027° 43 207°
MAGNETIC BEARING	UNL
DISTANCE IN NAUTICAL MILES	FL 245
VERTICAL LIMITS	
Reporting point (REP)	
COMPULSORY FLY-BY	▲
A SOLICITUD FLY-BY	△
COMPULSORY FLYOVER	⬆
A SOLICITUD FLYOVER	⬆
ATS/MET reporting point (MRP)	
COMPULSORY	■
ON REQUEST	□
Restricted airspace	
IDENTIFICATION OR AREA	SU R7
NATIONALITY LETTER	FL 100
VERTICAL LIMITS	GND
P=PROHIBITED	
R=RESTRICTED	
D=DANGER	
VHF omnidirectional radio range (VOR)	
COMPASS ROSE ORIENTED BY	MAGNETIC NORTH
Non-directional radio beacon (NDB)	
Distance measuring equipment (DME)	
Collocated VOR and DME radio navigation aids (VOR/DME)	
Identification for Radio navigation Aids (NAVAID)	
NAME	CARRASCO
NAVAID, FREQUENCY, IDENTIFICATION OR CALL SIGN	VOR/DME 116.9 CRR 31.1 34°49'57.8"S 056°01'30.5"W
GEOGRAPHICAL COORDINATES	30 m
ELEVATION OF DME SITE (TO THE NEAREST 30 M)	
Isogonal or isogon line	
Area minimum altitude	
EACH 1° QUADRILATERAL CONTAIN THE AREA MINIMUM ALTITUDE (AMA) THAT REPRESENTS THE LOWEST ALTITUDE TO BE USED UNDER INSTRUMENTAL METEOROLOGICAL CONDITIONS (IMC). THE AMA WILL PROVIDE A MINIMUM CLEARANCE OF 1000 FEET ABOVE ALL OBSTACLES LOCATED IN THE QUADRILATERAL. IT IS REPRESENTED IN THOUSAND AND HUNDRED OF FEET ABOVE MEAN SEA LEVEL.	
EXAMPLE: 2100 FEET	21



COMMUNICATION FACILITIES	
ADAMI	TWR 118.4 - 122.1
ARTIGAS	TWR 122.1
CARMELO	AFIS 118.0 - 122.1
CARRASCO	APP 119.2 - 120.2
COLONIA	TWR 118.1 - 121.8
CURBELO	TWR 118.3 - 122.1
DURAZNO	TWR 120.4 - 126.2
GENERAL ARTIGAS	TWR 118.5
MELO	TWR 118.6 - 122.1
MONTEVIDEO	ACC 128.5 - 126.3
PAYSANDU	AFIS 118.2 - 122.1
P. del ESTE	TWR 118.7
RIVERA	TWR 118.0 - 122.1
SALTO	TWR 118.8 - 122.1
TACUAREMBO	AFIS 118.9 - 122.1
EMERGENCIA	121.5

LEGEND	
Aerodrome	
Flight information region (FIR)	
Control area (CTA)	
CTA NAME	MONTEVIDEO
ATS AIRSPACE CLASS	FL 195 UNL FL 085 A FL 195 GND
UPPER LIMIT	
LOWER LIMIT	
ATS UNIT PROVIDING THE SERVICE	MONTEVIDEO ACC
Terminal control area (TMA)	
TMA NAME	CARRASCO
ATS AIRSPACE CLASS	FL 245 UNL FL 195 A 600 M GND
UPPER LIMIT	
LOWER LIMIT	
ATS UNIT PROVIDING THE SERVICE	CARRASCO APP
Control zone (CTR)	
CTR NAME	CARRASCO
ATS AIRSPACE CLASS	FL 035 C
UPPER LIMIT	
ATS UNIT THAT PROVIDES THE SERVICE	CARRASCO APP
ATS AIRSPACE CLASS	
Monday to Friday (except holidays) from 10:00 to 22:00 UTC: Class "C" Others: Class "G"	*
Monday to Friday (except holidays) from 11:00 to 23:00 UTC: Class "C" Others: Class "G"	+
Monday to Sunday from 10:00 to 22:00 UTC: Class "C" Others: Class "G"	+
Monday to Friday from 10:00 to 22:00 UTC: Class "C" Others: Class "G"	+
Conventional navigation route	
ROUTE DESIGNATOR	025° - 225°
MAGNETIC BEARING	UNL
DISTANCE IN NAUTICAL MILES	FL 245
UPPER LIMIT	
MINIMUM FLIGHT ALTITUDE	
Reporting point (REP)	
COMPULSORY FLY-BY	
A SOLICITUD FLY-BY	
COMPULSORY FLYOVER	
A SOLICITUD FLYOVER	
ATS/MET reporting point (MRP)	
COMPULSORY	
ON REQUEST	
Restricted airspace	
IDENTIFICATION OR AREA	SU R7
NATIONALITY LETTER	FL 100
VERTICAL LIMITS	GND
P=PROHIBITED R=RESTRICTED D=DANGER	
VHF omnidirectional radio range (VOR)	
COMPASS ROSE ORIENTED BY MAGNETIC NORTH	
Non-directional radio beacon (NDB)	
Distance measuring equipment (DME)	
Collocated VOR and DME radio navigation aids (VOR/DME)	
Identification for Radio navigation Aids (NAVAID)	
NAME	CARRASCO
NAVAID, FREQUENCY, IDENTIFICATION OR CALL SIGN	VOR/DME 116.9 CRR 116.9 34°49'57.8"S 056°01'30.5"W
GEOGRAPHICAL COORDINATES	
ELEVATION OF DME SITE (TO THE NEAREST 30 M)	30 m
Isogonal or isogon line	
Area minimum altitude	
EACH 1° QUADRILATERAL CONTAIN THE AREA MINIMUM ALTITUDE (AMA) THAT REPRESENTS THE LOWEST ALTITUDE TO BE USED UNDER INSTRUMENTAL METEOROLOGICAL CONDITIONS (IMC). THE AMA WILL PROVIDE A MINIMUM CLEARANCE OF 1000 FEET ABOVE ALL OBSTACLES LOCATED IN THE QUADRILATERAL. IT IS REPRESENTED IN THOUSAND AND HUNDRED OF FEET ABOVE MEAN SEA LEVEL.	
EXAMPLE: 2100 FEET	21



ADAMI TWR 118.4 - 122.1
CARRASCO APP 119.2 - 120.2
CARRASCO TWR 118.1 - 121.8
CURBELO TWR 118.3 - 122.1
GENERAL ARTIGAS TWR 118.5
MONTEVIDEO ACC 128.5 - 126.3
PUNTA del ESTE TWR 118.7
EMERGENCIA 121.5

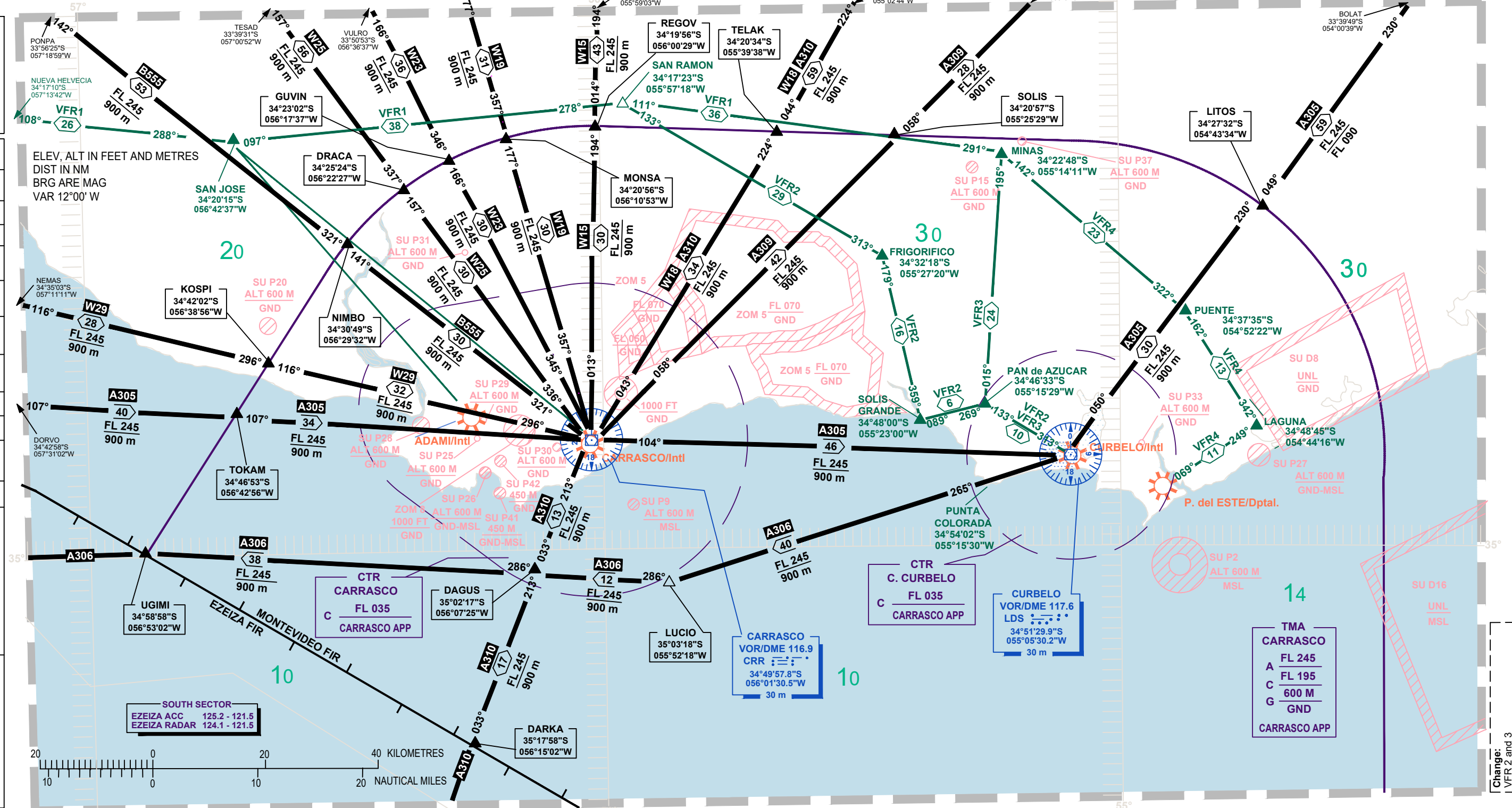
LEGEND	
Terminal control area (TMA)	
Control zone (CTR)	
Departmental	Dptal.
Reporting point (REP)	COMPULSORY FLY-BY
	ON REQUEST FLY-BY
	COMPULSORY FLYOVER
	ON REQUEST FLYOVER
Conventional navigation routes	
Distance in Nautical Miles	
Upper Limit	UNL
Lower Limit	FL 245
Magnetic bearing	025°

Radio navigation Aid	Name
Identification and frequency	CARRASCO VOR/DME 116.9 CRR
Geographical coordinates	34°49'57.8"S 056°01'30.5"W
Elevation of DME site	30 m

Area minimum altitude

EACH 1° QUADRILATERAL CONTAIN THE AREA MINIMUM ALTITUDE (AMA) THAT REPRESENTS THE LOWEST ALTITUDE TO BE USED UNDER INSTRUMENTAL METEOROLOGICAL CONDITIONS (IMC). THE AMA WILL PROVIDE A MINIMUM CLEARANCE OF 1000 FEET ABOVE ALL OBSTACLES LOCATED IN THE QUADRILATERAL. IT IS REPRESENTED IN THOUSAND AND HUNDRED OF FEET ABOVE MEAN SEA LEVEL.

EXAMPLE: 2100 FEET **21**



Change: VFR 2 and 3

AREA CHART - OACI

CARRASCO TMA

AREA NAVIGATION ROUTES

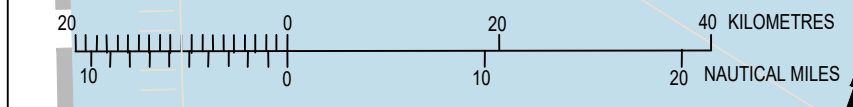
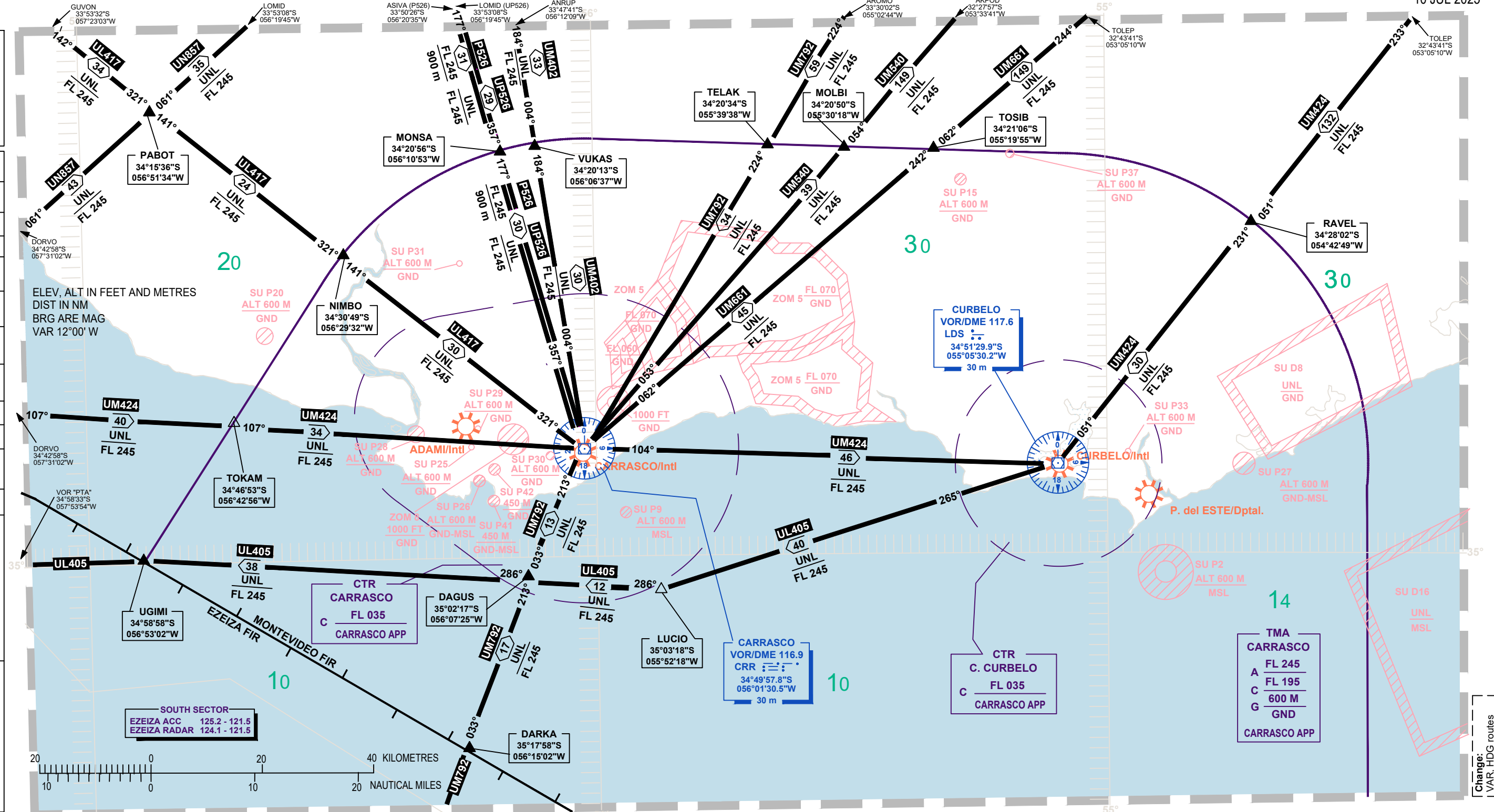
ADAMI TWR	118.4 - 122.1
CARRASCO APP	119.2 - 120.2
CARRASCO TWR	118.1 - 121.8
CURBELO TWR	118.3 - 122.1
GENERAL ARTIGAS TWR	118.5
MONTEVIDEO ACC	128.5 - 126.3
PUNTA del ESTE TWR	118.7
EMERGENCIA	121.5

LEGEND	
Terminal control area (TMA)	
Control zone (CTR)	
Departamental	Dptal.
Reporting point (REP)	COMPULSORY FLY-BY
	ON REQUEST FLY-BY
	COMPULSORY FLYOVER
	ON REQUEST FLYOVER
Area navigation route (RNAV)	
Distance in Nautical Miles	
Upper Limit	UNL
Lower Limit	FL 245
Magnetic bearing	025°

Radio navigation Aid	Name
Identification and frequency	CARRASCO VOR/DME 116.9 CRR
Geographical coordinates	34°49'57.8"S 056°01'30.5"W
Elevation of DME site	30 m

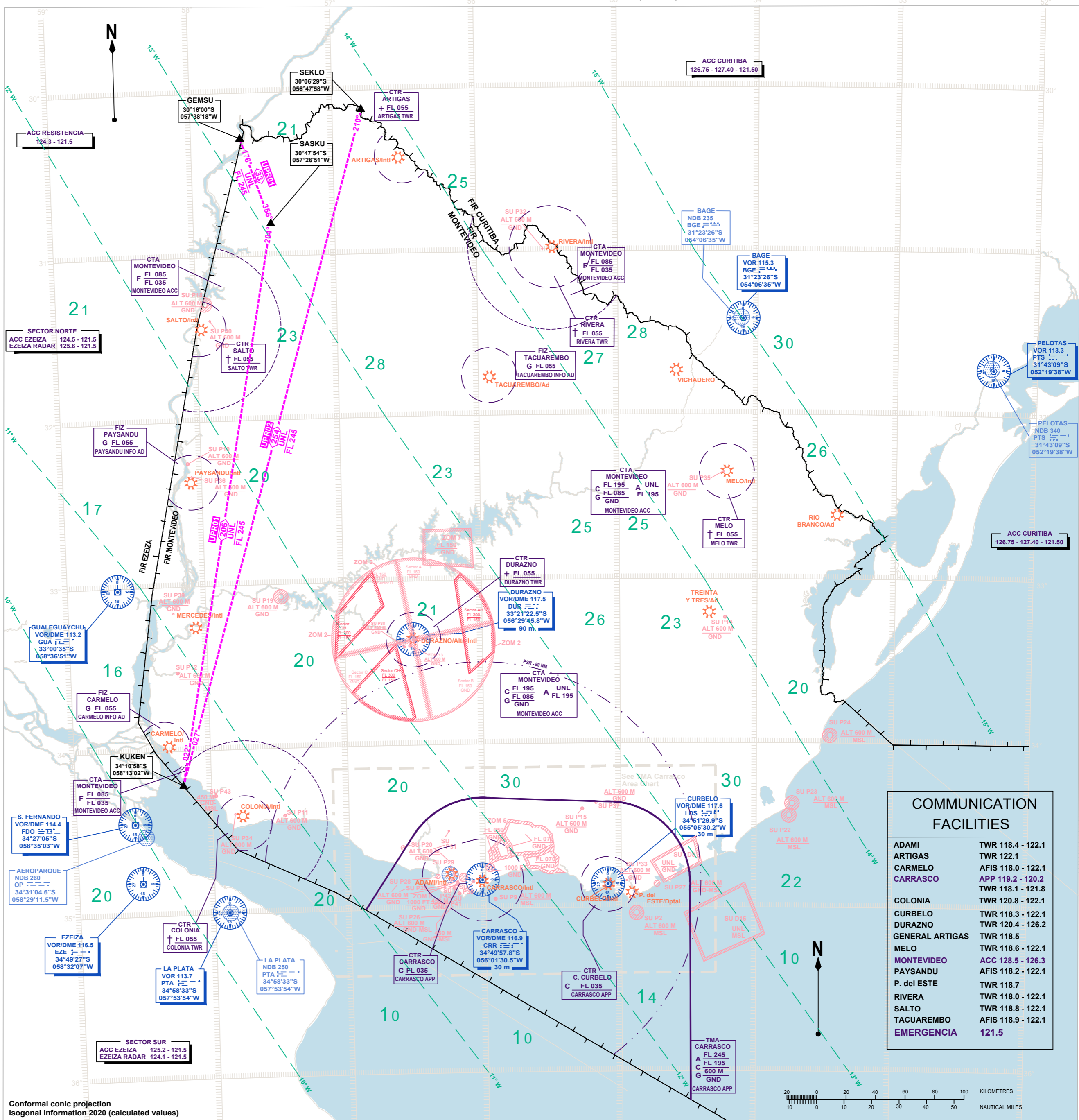
Area minimum altitude	Each 1° quadrilateral contains the area minimum altitude (AMA) that represents the lowest altitude to be used under instrumental meteorological conditions (IMC). The AMA will provide a minimum clearance of 1000 feet above all obstacles located in the quadrilateral. It is represented in thousand and hundred of feet above mean sea level.
-----------------------	---

EXAMPLE: 2100 FEET	21
--------------------	----



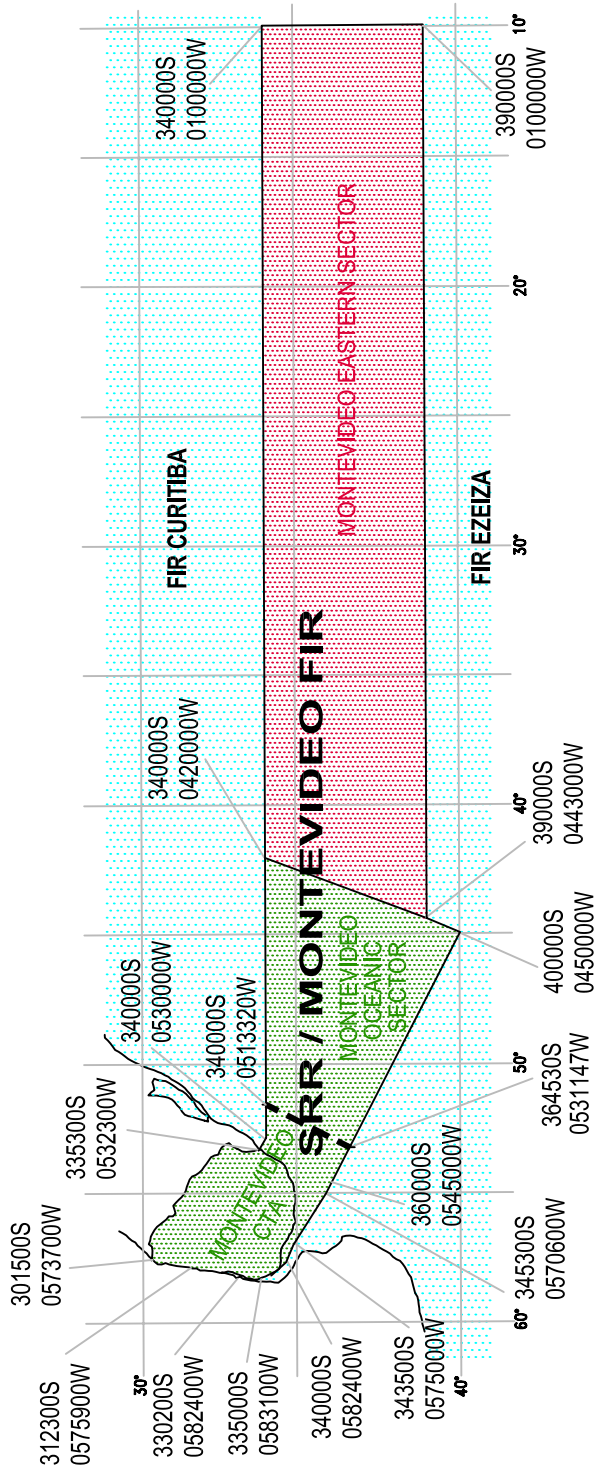
Change: VAR, HDG, routes

LEGEND	
Aerodrome	
Flight information region (FIR)	
Control area (CTA)	
CTA NAME	CTA MONTEVIDEO
ATS AIRSPACE CLASS	FL 195 UNL
UPPER LIMIT	FL 085 A FL 195
LOWER LIMIT	GND
ATS UNIT PROVIDING THE SERVICE	MONTEVIDEO ACC
Terminal control area (TMA)	
TMA NAME	TMA CARRASCO
ATS AIRSPACE CLASS	FL 245
UPPER LIMIT	FL 195
LOWER LIMIT	600 M
ATS UNIT PROVIDING THE SERVICE	CARRASCO APP
Control zone (CTR)	
CTR NAME	CTR CARRASCO
ATS AIRSPACE CLASS	FL 035
UPPER LIMIT	FL 035
ATS UNIT THAT PROVIDES THE SERVICE	CARRASCO APP
ATS AIRSPACE CLASS	
Monday to Friday (except holidays) from 10:00 to 22:00 UTC: Class "C" Others: Class "G"	*
Monday to Friday (except holidays) from 11:00 to 23:00 UTC: Class "C" Others: Class "G"	+
Monday to Sunday from 10:00 to 22:00 UTC: Class "C" Others: Class "G"	+
Monday to Friday from 10:00 to 22:00 UTC: Class "C" Others: Class "G"	+
User Preferred route (UPR)	
ROUTE DESIGNATOR	UPR01
MAGNETIC BEARING	027° - 43° - 207°
DISTANCE IN NAUTICAL MILES	UNL
VERTICAL LIMITS	FL 245
Reporting point (REP)	
COMPULSORY FLY-BY	
A SOLICITUD FLY-BY	
COMPULSORY FLYOVER	
A SOLICITUD FLYOVER	
ATS/MET reporting point (MRP)	
COMPULSORY	
ON REQUEST	
Restricted airspace	
IDENTIFICATION OR AREA	SU R7
NATIONALITY LETTER	FL 100
VERTICAL LIMITS	GND
P=PROHIBITED	
R=RESTRICTED	
D=DANGER	
VHF omnidirectional radio range (VOR)	
COMPASS ROSE ORIENTED BY MAGNETIC NORTH	
Non-directional radio beacon (NDB)	
Distance measuring equipment (DME)	
Collocated VOR and DME radio navigation aids (VOR/DME)	
Identification for Radio navigation Aids (NAVAID)	
NAME	CARRASCO
NAVAID, FREQUENCY, IDENTIFICATION OR CALL SIGN	VOR/DME 116.9 CRR 117.1 34°49'57.8"S 056°01'30.5"W
GEOGRAPHICAL COORDINATES	056°01'30.5"W
ELEVATION OF DME SITE (TO THE NEAREST 30 M)	30 m
Isogonal or isogonic line	
Area minimum altitude	
EACH 1° QUADRILATERAL CONTAIN THE AREA MINIMUM ALTITUDE (AMA) THAT REPRESENTS THE LOWEST ALTITUDE TO BE USED UNDER INSTRUMENTAL METEOROLOGICAL CONDITIONS (IMC). THE AMA WILL PROVIDE A MINIMUM CLEARANCE OF 1000 FEET ABOVE ALL OBSTACLES LOCATED IN THE QUADRILATERAL. IT IS REPRESENTED IN THOUSAND AND HUNDRED OF FEET ABOVE MEAN SEA LEVEL.	
EXAMPLE: 2100 FEET	21



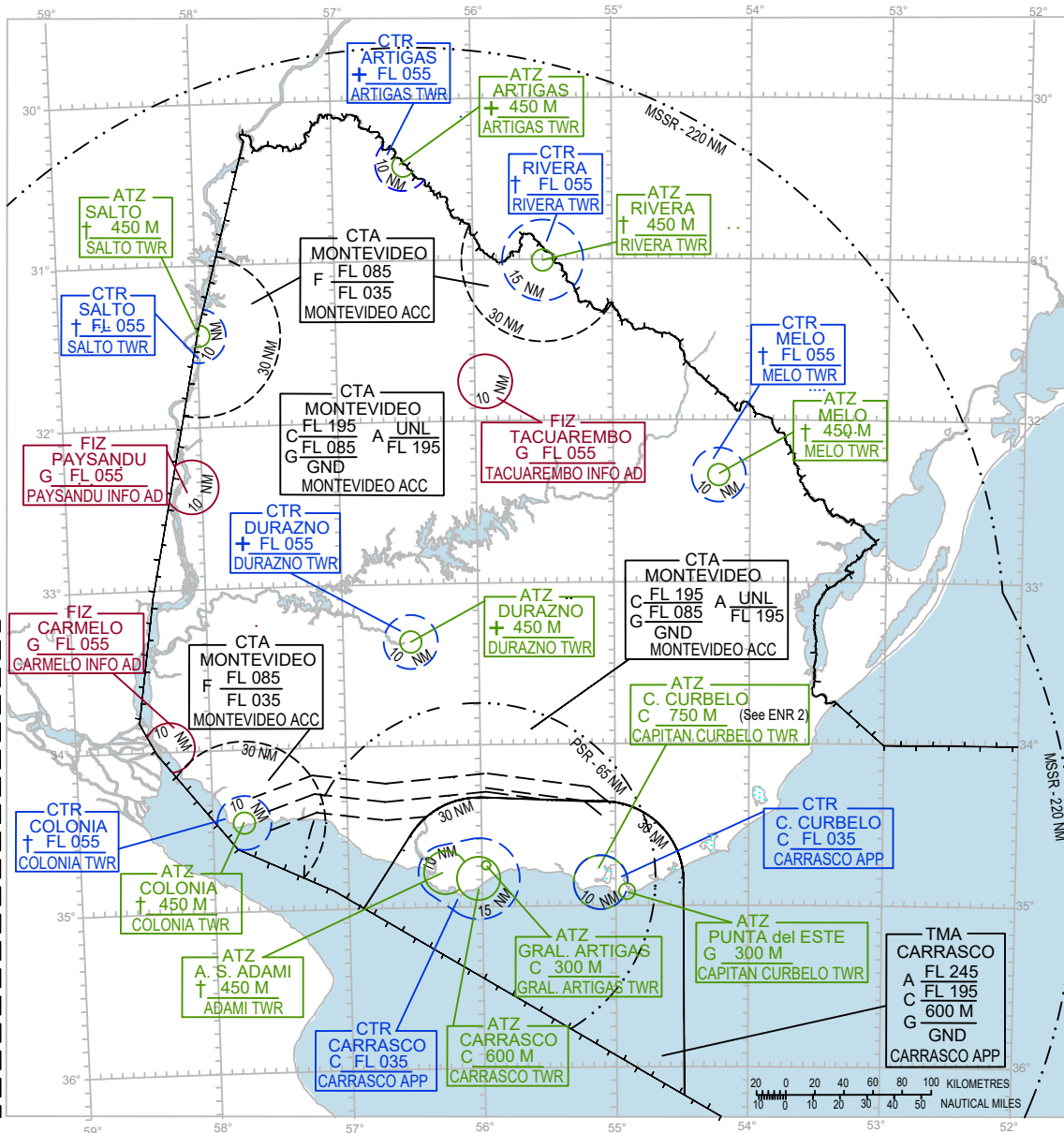
COMMUNICATION FACILITIES	
ADAMI	TWR 118.4 - 122.1
ARTIGAS	TWR 122.1
CARMELO	AFIS 118.0 - 122.1
CARRASCO	APP 119.2 - 120.2
	TWR 118.1 - 121.8
COLONIA	TWR 120.8 - 122.1
CURBELO	TWR 118.3 - 122.1
DURAZNO	TWR 120.4 - 126.2
GENERAL ARTIGAS	TWR 118.5
MELO	TWR 118.6 - 122.1
MONTEVIDEO	ACC 128.5 - 126.3
PAYSANDU	AFIS 118.2 - 122.1
P. del ESTE	TWR 118.7
RIVERA	TWR 118.0 - 122.1
SALTO	TWR 118.8 - 122.1
TACUAREMBO	AFIS 118.9 - 122.1
EMERGENCIA	121.5

AIR TRAFFIC SERVICES AIRSPACE - FIR



Change:
Title:

AIR TRAFFIC SERVICES AIRSPACE - TMA, CTR, FIZ, ATZ



Change: TMA Durazno TMA eliminated; Durazno CTR modified; new Durazno ATZ.

From FL 085 up to FL 195, airspace class C.
From GND up to FL 085, airspace class G.

C	FL 195
G	FL 085
	GND

From GND up to 600 M, airspace class C.

ATZ	CARRASCO
C	600 M
	CARRASCO TWR

MONTEVIDEO OCEANIC SECTOR

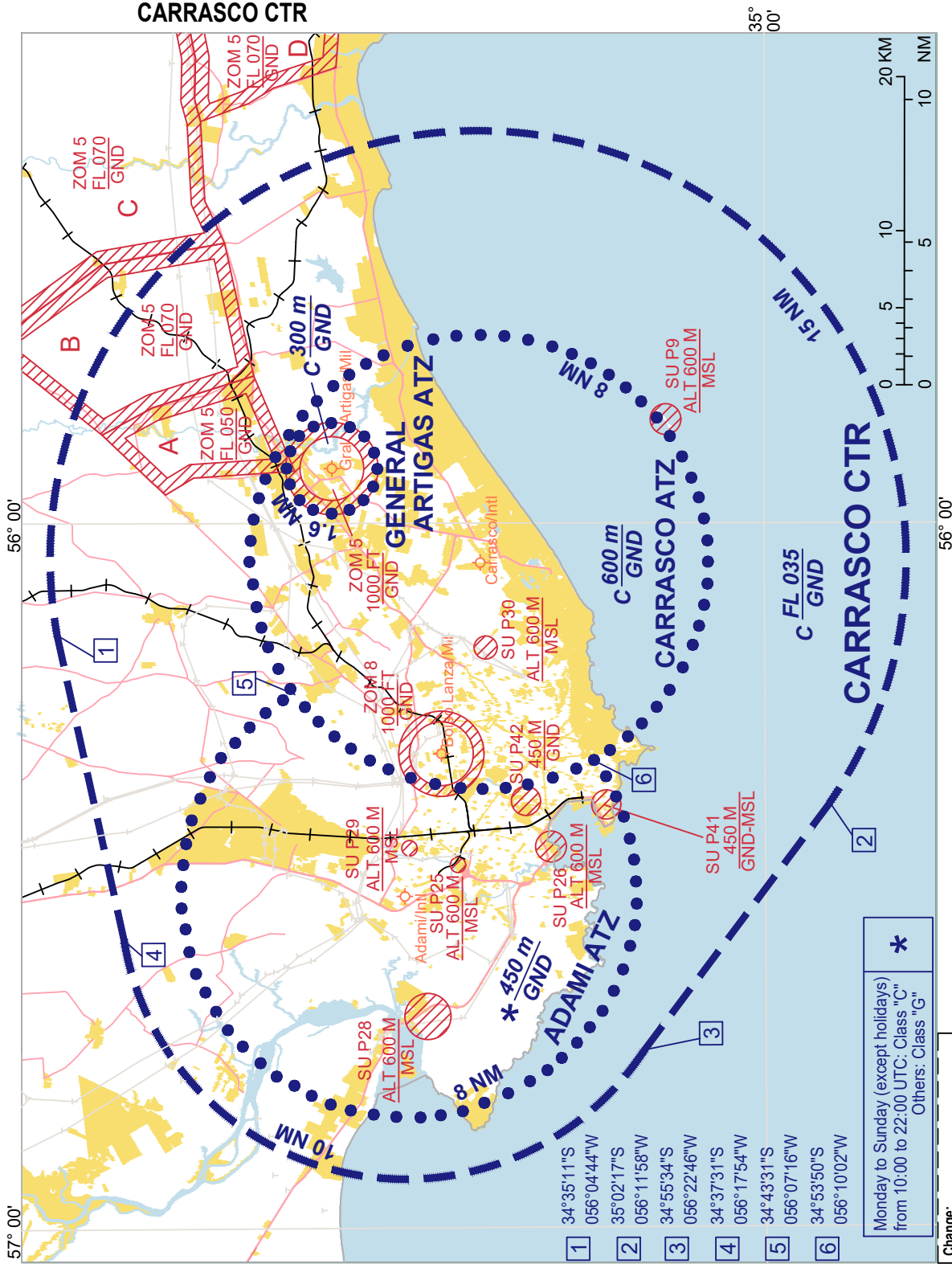
G	UNL
	MSL

MONTEVIDEO EASTERN SECTOR

MSSR ... Monopulse Secondary Surveillance Radar

Monday to Friday (except holidays) from 10:00 to 22:00 UTC: Class "C"; Others: Class "G"	*
Monday to Friday (except holidays) from 11:00 to 23:00 UTC: Class "C"; Others: Class "G"	±
Monday to Sunday from 10:00 to 22:00 UTC: Class "C"; Others: Class "G"	†
Monday to Friday from 10:00 to 22:00 UTC: Class "C"; Others: Class "G"	+

CARRASCO CTR



- 1 34°35'11\" S 056°04'44\" W
- 2 35°02'17\" S 056°11'58\" W
- 3 34°55'34\" S 056°22'46\" W
- 4 34°37'31\" S 056°17'54\" W
- 5 34°43'31\" S 056°07'16\" W
- 6 34°53'50\" S 056°10'02\" W

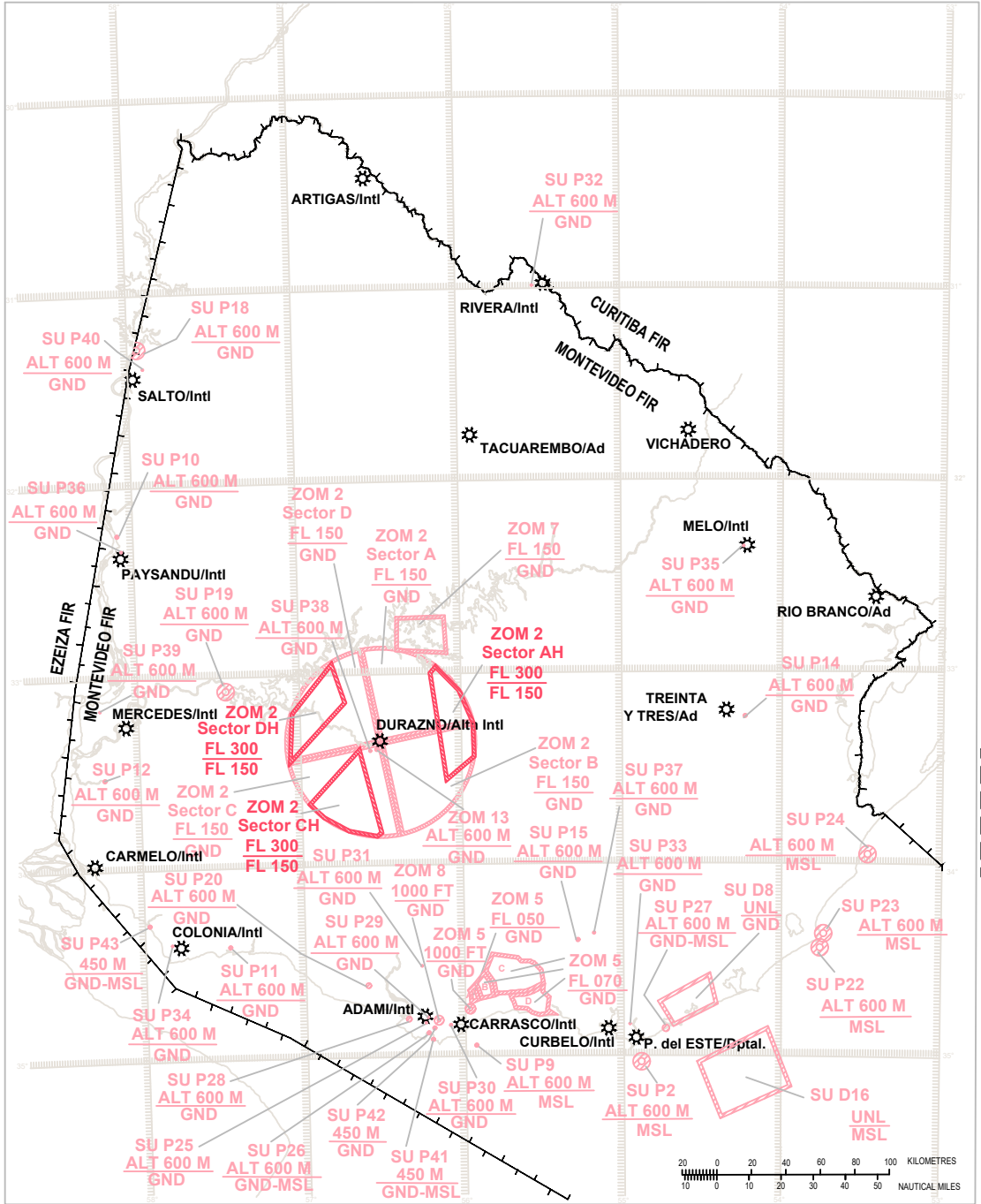
Monday to Sunday (except holidays)
from 10:00 to 22:00 UTC; Class "C"
Others: Class "G"

Change:
ZOM 5

**INTENTIONALLY
LEFT BLANK**

**INTENTIONALLY
LEFT BLANK**

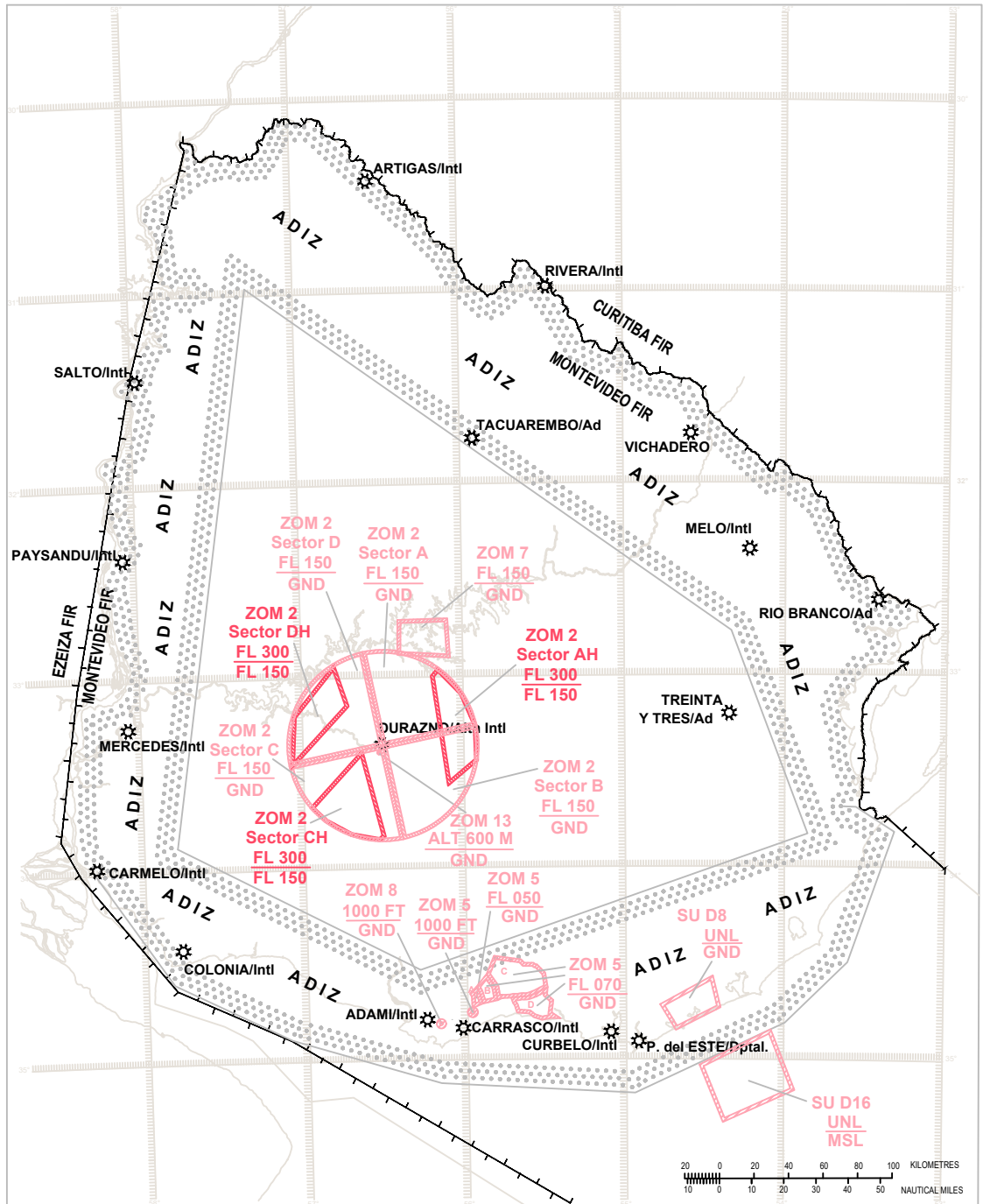
PROHIBITED, RESTRICTED AND DANGER AREAS - INDEX CHART



Change:
ZOM 2 and ZOM 7

**INTENTIONALLY
LEFT BLANK**

MILITARY EXERCISE TRAINING AREAS AND ADIZ - INDEX CHART



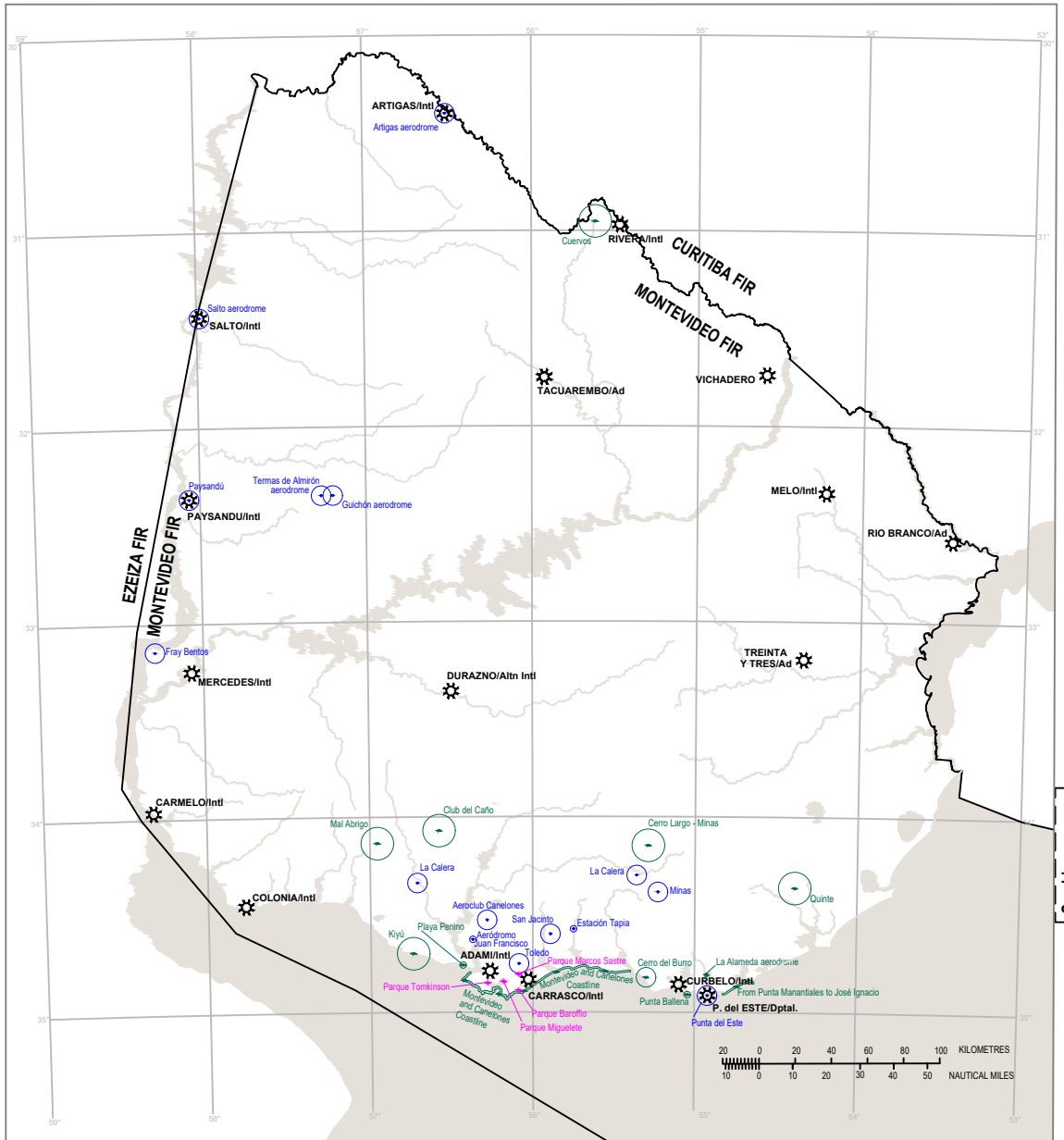
**INTENTIONALLY
LEFT BLANK**




OTHER ACTIVITIES OF A DANGEROUS NATURE - INDEX CHART

NIL.

**INTENTIONALLY
LEFT BLANK**

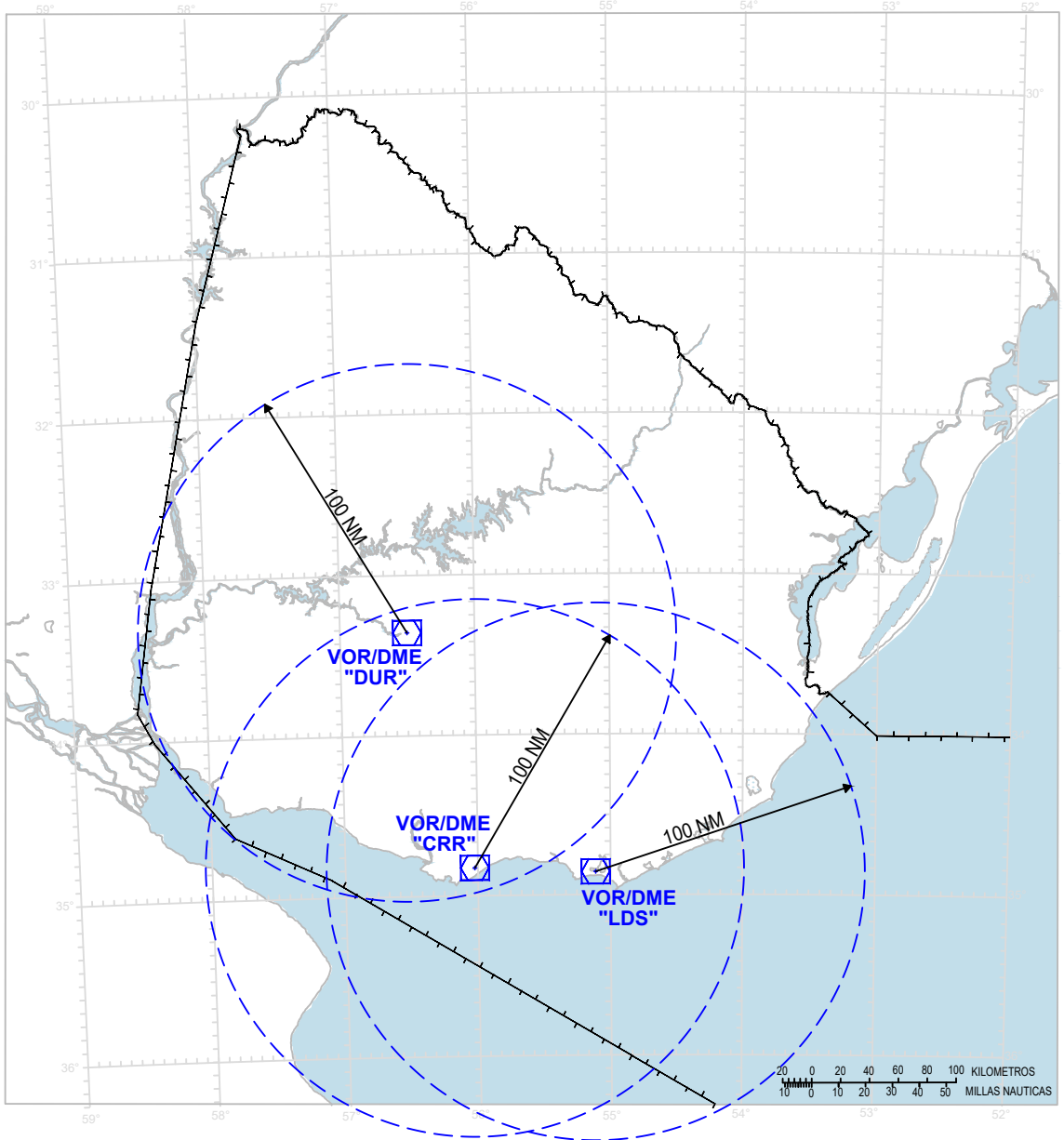
AERIAL SPORTING AND RECREATIONAL – INDEX CHART



LEGEND	
Gliding areas, free flight, paragliding, paramotor and hang gliding areas	
Parachute jumping areas	
Remotely piloted air device areas	

**INTENTIONALLY
LEFT BLANK**

RADIO FACILITY - INDEX CHART

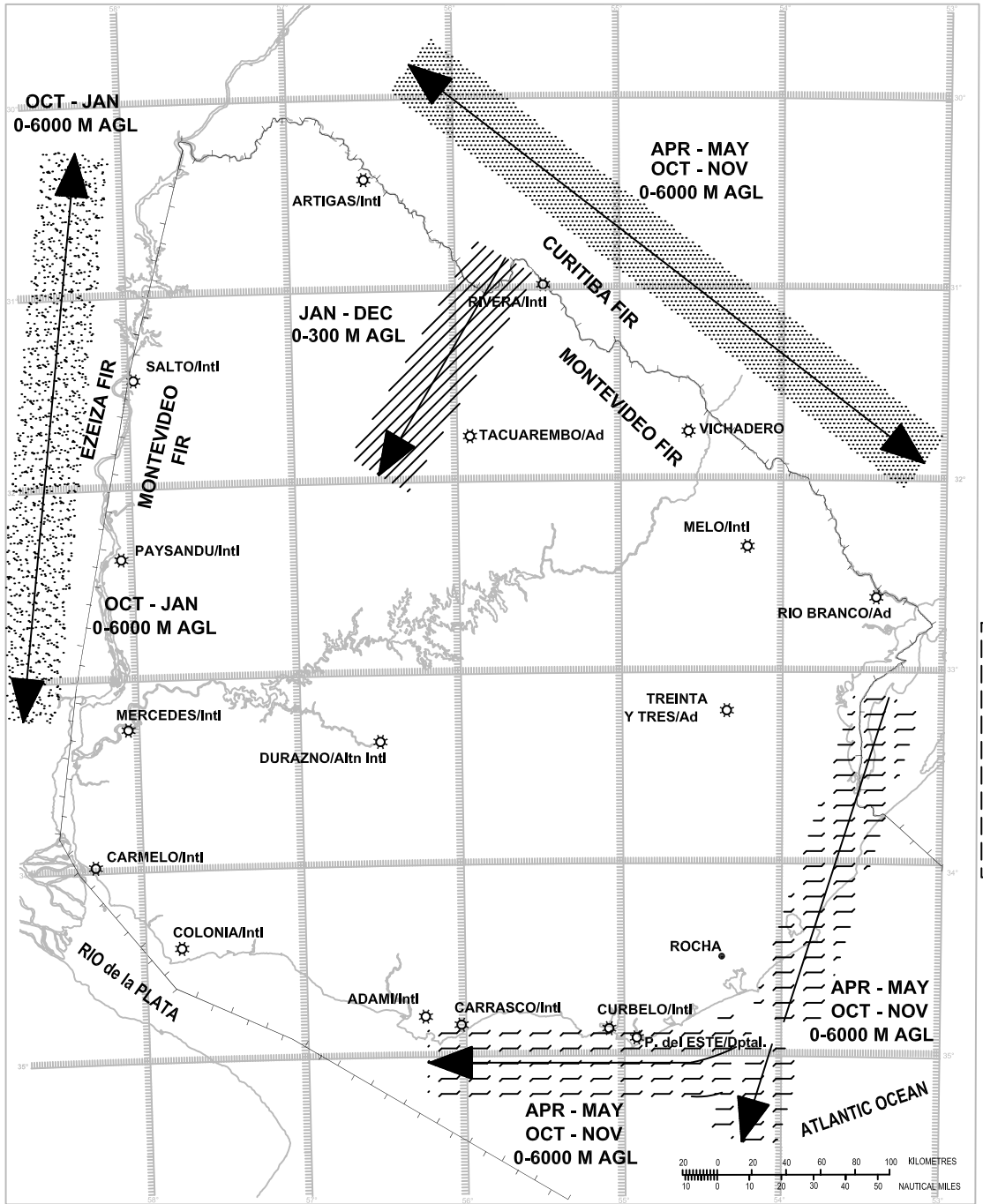


Station name	Aid	ID	FREQ	COORD
Durazno	VOR/DME	DUR	117.5 MHZ	33°21'22.5"S 056°29'45.8"W
Carrasco	VOR/DME	CRR	116.9 MHZ	34°49'57.8"S 056°01'30.5"W
Curbelo	VOR/DME	LDS	117.6 MHZ	34°51'29.9"S 055°05'30.2"W

LEGEND	
Radio navigation aid coverage	

**INTENTIONALLY
LEFT BLANK**

BIRD MIGRATION ROUTES - INDEX CHART

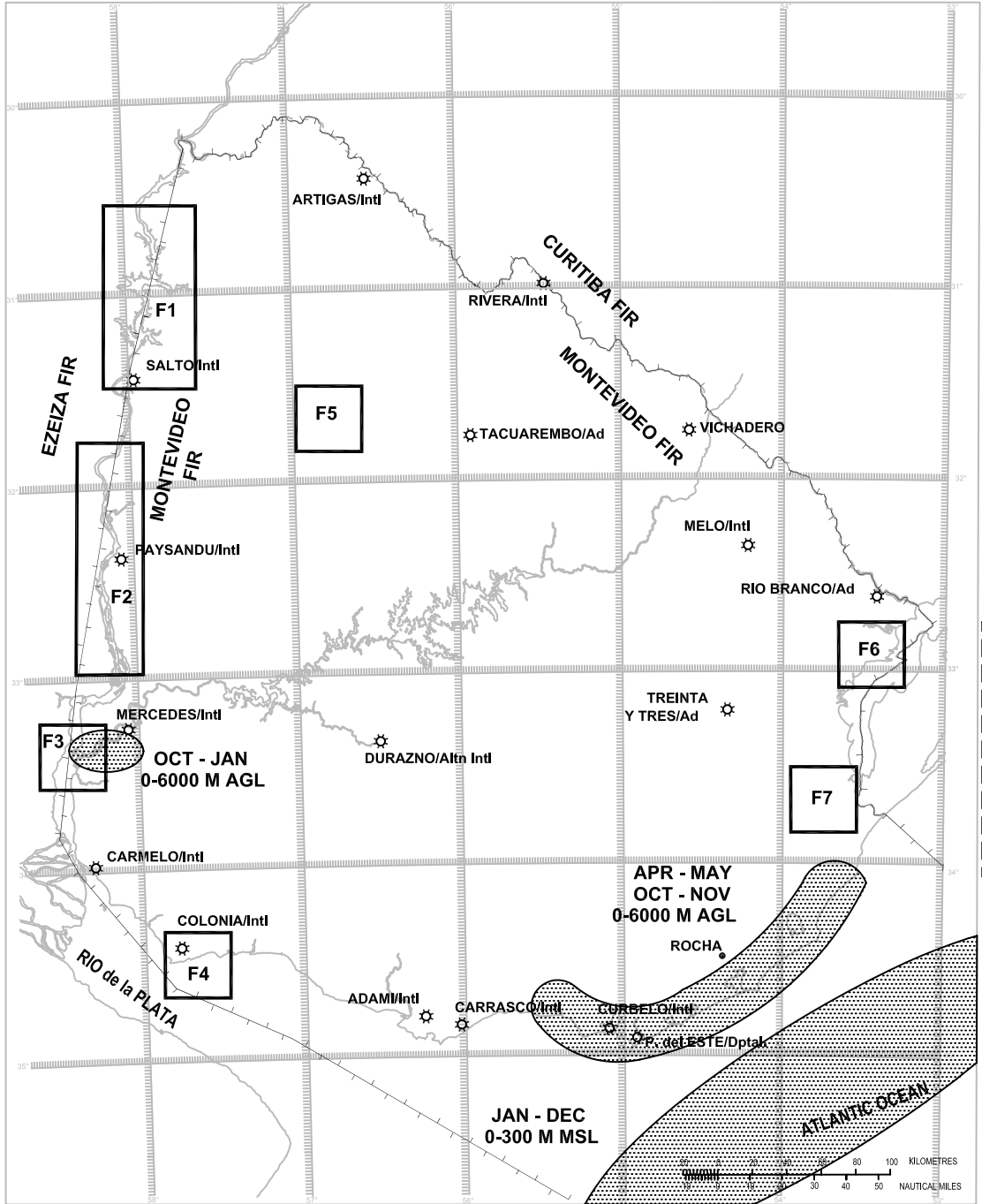


Change: Included AD Vichadero

- SMALL BIRDS**
- PLOVER, DUCKS, SMALL CROWS, GARZAS, SMALL BIRDS AND RAPTOR.**
- INVASION OF SUBTROPICAL WILDLIFE AREA.**
- PLOVER, PLAYEROS, GEESE, SWANS AND SMALL CROWS.**

**INTENTIONALLY
LEFT BLANK**

BIRD CONCENTRATIONS AND AREAS WITH SENSITIVE FAUNA - INDEX CHART



Change: Included AD Vichadero

F... AREA WITH SENSITIVE FAUNA
 BIRD CONCENTRATION AREA
 Limit Period

**INTENTIONALLY
LEFT BLANK**